

48 Canopus Circuit, ATHERTON, QLD 4883

Country Charm

Fresh on the market and oozing with character and charm this property has so much to offer and will not last long. Located on the north side of Atherton with no rear neighbours expected for at least the next few years this property has views of farmlands and surrounding mountains.

The features of this property will suit many people who have been searching for a home with split living. Boasting a separate studio space for work, teenagers or extended family.

The home itself is a beautiful red brick home which has been fully renovated inside, all the walls have been re-sheeted with square set plasterboard, the timber floor boards have been brought back to life and the kitchen, bathroom and laundry have been designed to keep with modern country charm style, tastefully styled with subway tiles, timber features and matt black fixtures.

The features of this property include:

Main Dwelling:

The particulars contained herein are supplied for information only and shall not be taken as a representation in any respect on the part of the vendor or its agent. Interested parties should contact the nominated person or office for full and current details.

TYPE: Sold

INTERNET ID: 30P0973

SALE DETAILS

Sold

CONTACT DETAILS

Malanda

21 James Street, Malanda
Malanda, QLD
07 4096 5666

Michelle Raso

0428 116 136

- Open Plan living and dining room with casement windows allowing plenty of natural light, fans and air-conditioning.
- Modern Country Styled kitchen with Timber Benchtops, Subway Tiled Splashback, Shaker Doors and Drawers, Island Breakfast Bar, Dishwasher and Free Standing Gas oven
- 3 spacious bedrooms all with ceiling fans, the main with airconditioning and a beautiful barn style entry door.
- Modern bathroom tiled to the ceiling, featuring a freestanding bathtub, wall hung vanity, separate shower and matt black fixtures. The toilet is also separate.
- Good sized Study with a built in cupboard
- The outdoor living space features a verandah with a bar area overlooking the backyard and surrounding mountains, the perfect space to enjoy a morning coffee and also a deck for entertaining.

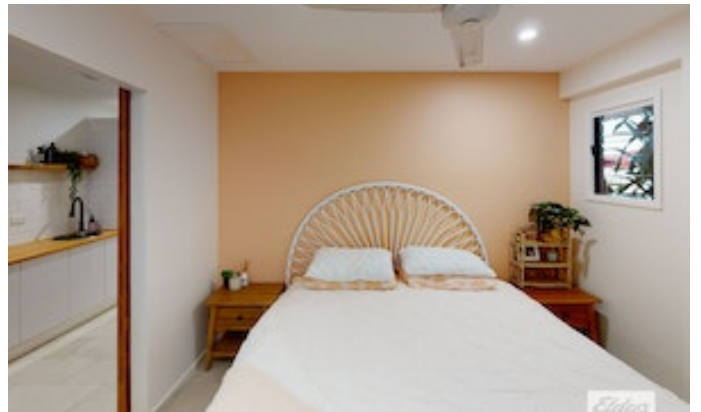
Studio/Shed

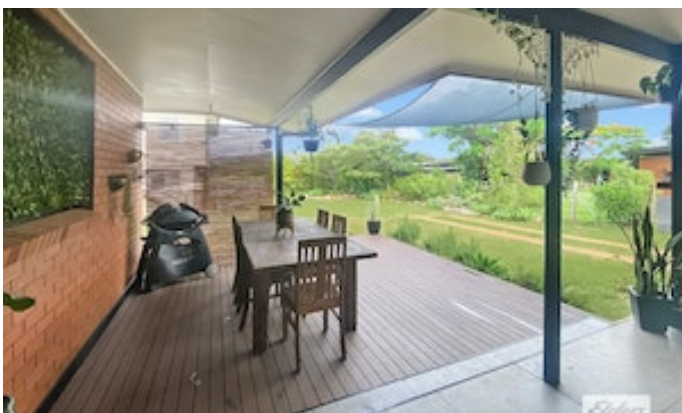
- In the backyard you have the bonus of a large shed with double roller door access plus a large workshop area, perfect for all your toys and a man cave.
- Above the garage is a weatherboard studio with large windows throughout capturing the amazing 180 degree rural views. The studio features are large open plan space with a kitchenette and built in study desk, a fully renovated bathroom with wall hung vanity, shower and toilet and a separate bedroom.

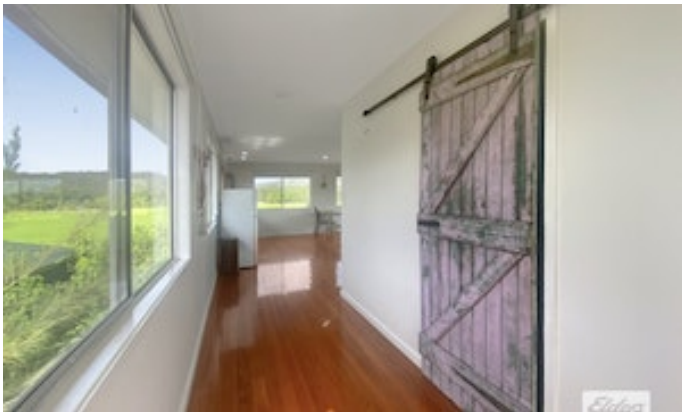
All of this on a generous 1037m2 block, there is nothing to do but move in and soak in the country charm that this property has to offer contact Exclusive listed Elders Agent Michelle Raso on 0428 116 136 for more information or attend one of our open homes.

Other features: Close to Schools, Close to Shops, Kitchenette, Openable Windows, Roller Door Access

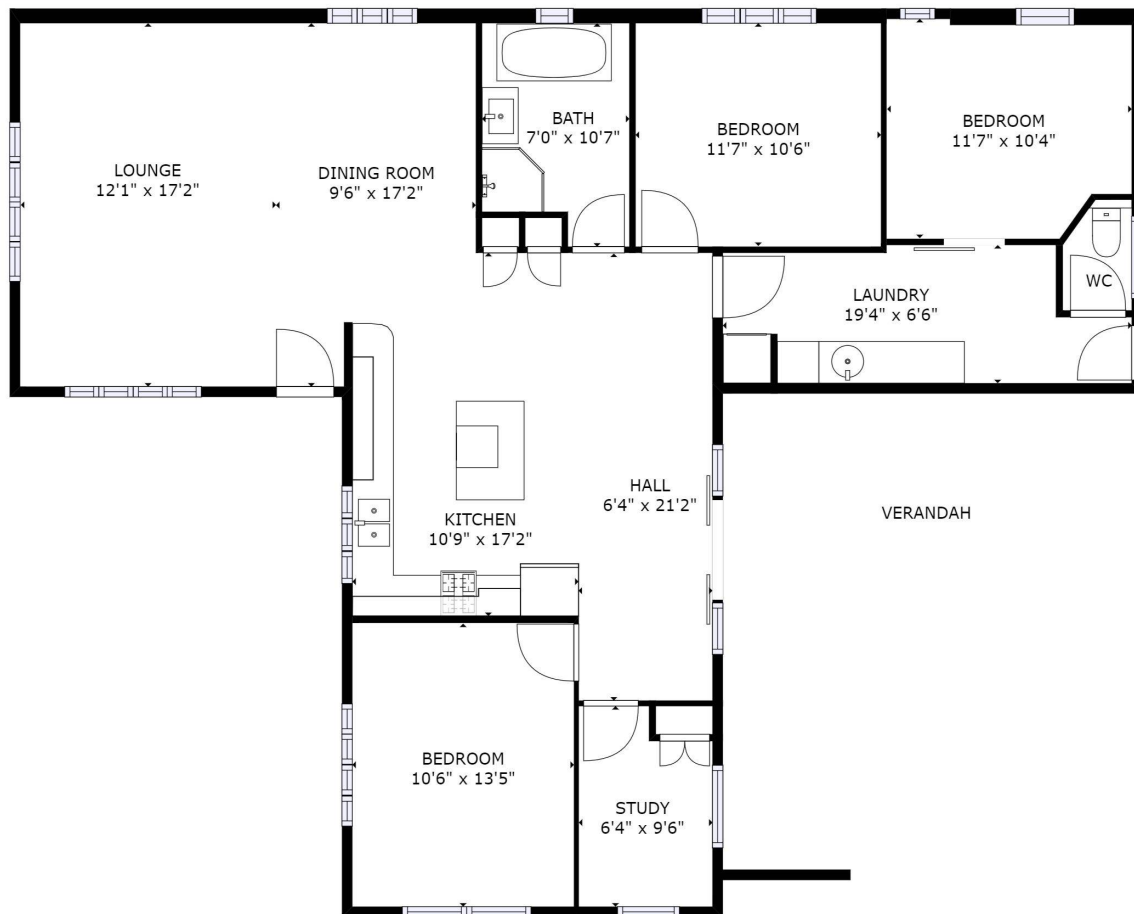
- Land Area 1,037.00 square metre
- Bedrooms: 4
- Bathrooms: 2
- Car Parks: 2
- Floorboards











Real Estate

GROSS INTERNAL AREA
FLOOR 1: 1322 sq. ft
TOTAL: 1322 sq. ft

SIZES AND DIMENSIONS ARE APPROXIMATE, ACTUAL MAY VARY.



FLOOR 1