



## 98 Godfrey Road, KAIRI, QLD 4872

### Very Impressive Lifestyle Property

One of the most impressive properties to hit the market this year..... 98 Godfrey Road has the dream home, is in a prime sought after location and the shed is on every man's wish list.

Located in Kairi on a spacious 12.1ha, this property boasts many features and an inspection is a must to appreciate the sumptuous lifestyle.

From the moment you drive down the asphalt driveway past the large 30m x 24m arena complex which has a 20m x 24m powered covered arena and look out onto the paddocks with expansive views over the Atherton Tablelands you feel in love with your own backyard.

The luxurious and architecturally designed rendered home was built in 2015 by a highly regarded local builder. Once you step inside you can appreciate the space and openness of this beautiful home.

The hub of the house features the open plan kitchen, dining and lounge which overflow onto the large entertaining area through the aluminium bi-folding doors. The in-ground

The particulars contained herein are supplied for information only and shall not be taken as a representation in any respect on the part of the vendor or its agent. Interested parties should contact the nominated person or office for full and current details.

**TYPE:** Sold

**INTERNET ID:** 30P0989

**SALE DETAILS**

**CONTACT AGENT**

**CONTACT DETAILS**

**Malanda**

21 James Street, Malanda  
Malanda, QLD  
07 4096 5666

**Shellie Nightingale**  
0429 966 038

pool compliments this space, including the sizeable games room with bar.

An airy modern galley kitchen with all the mods and cons is complimented by the large hidden butlers pantry.

The right wing of the house boasts a very impressive master with a his and hers walk in robe on either side and a massive ensuite. A large office with built in cupboards.

The left wing has a second lounge room, study nook, two bedrooms with built in robes and a spacious main bathroom.

To the rear of the house is the large laundry with built in cupboards and bench space, spacious two bay garage with a full wall storage cupboard.

The massive 28m x 20m colorbond shed is fully insulated with three high clearance censored remote control doors and also features a private fully self contained granny flat with carport; great for extended family, visitors, care taker or tenant.

Features to name a few:

- \* 364 sqm rendered three bedroom family home
- \* Modern quality kitchen with butler's pantry
- \* Airy open plan living with wood heater
- \* Indoor & Outdoor entertaining areas with bar & inground swimming pool
- \* 28m x 20m Colorbond machinery shed with granny flat
- \* 20m x 24m Colorbond indoor sand arena with lights and sprinkler system, 8 stables with 2 day yards, covered wash bay & fully sealed tack and feed rooms - 30m x 24m overall
- \* Steel cattle yards, under cover crush, loading ramp
- \* 16m x 4m Colorbond shed with 4 stables
- \* L shaped outdoor arena - 60m x (40m x 40m) & (20m x 20m)
- \* Dog kennels
- \* Bore & rainwater tanks

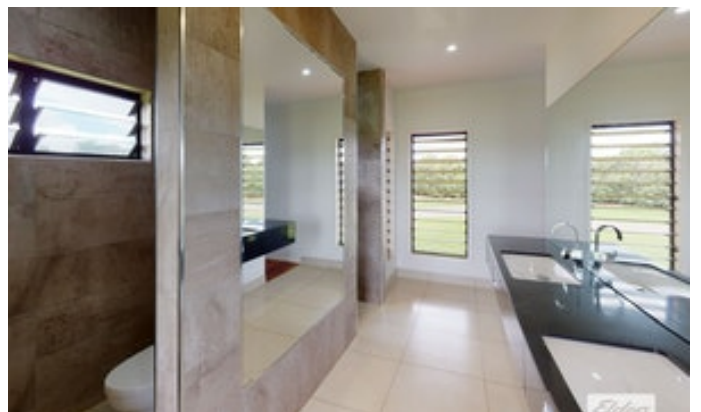
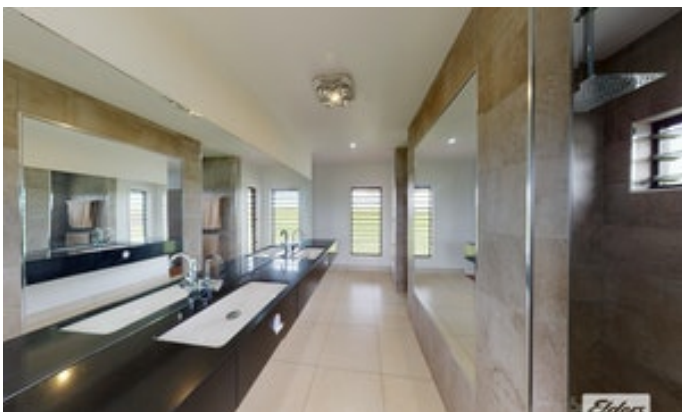
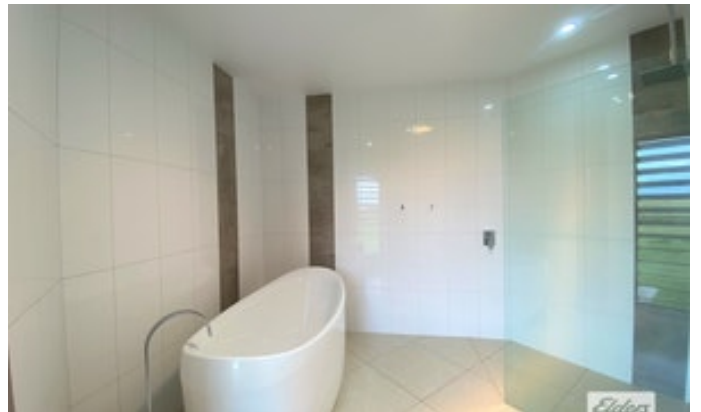
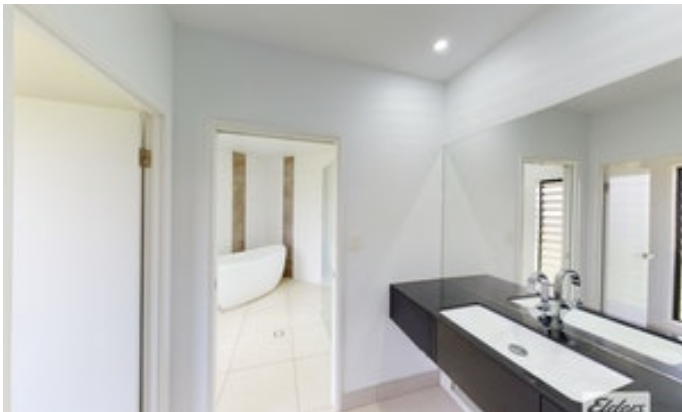
A high calibre property with too many features to list, call Elders exclusively listed agent Shellie Nightingale on 0429 966 038 for the grand tour.

Other features: Kitchenette, Pool, Roller Door Access

- Land Area 12.1 hectares
- Building Area: 364.00 square metres
- Bedrooms: 3
- Bathrooms: 2
- Car Parks: 8
- Double garage
- Single carport
- Ensuite















SIZES AND DIMENSIONS ARE APPROXIMATE. ACTUAL MAY VARY.

