



## 28 Newman Drive, TOLGA, QLD 4882

### An Acre in Rangeview

This 4348 sqm block is located in Rangeview, Tolga on the naturally air-conditioned Atherton Tablelands.

The solid masonry block home was built in the mid - late 1990's, is private with established gardens and fruit trees and features the following:

- \* Three bedrooms, the master with air-conditioning
- \* Open plan kitchen, dining and lounge room; wood heater
- \* Laminate kitchen with dishwasher, electric wall oven & cooktop, range hood
- \* Spacious internal laundry with large built in storage cupboard
- \* One bathroom with bathtub, shower and vanity; separate toilet
- \* Huge outdoor/entertainment area which incorporates the double garage with remote roller door access to one side
- \* Large 9m x 7m Colorbond shed with concrete floor

The particulars contained herein are supplied for information only and shall not be taken as a representation in any respect on the part of the vendor or its agent. Interested parties should contact the nominated person or office for full and current details.

**TYPE:** Sold

**INTERNET ID:** 30P1262

**SALE DETAILS**

**\$583,500**

**CONTACT DETAILS**

**Malanda**

21 James Street, Malanda

Malanda, QLD

07 4096 5666

**Elders Malanda**

\* 2kW solar system

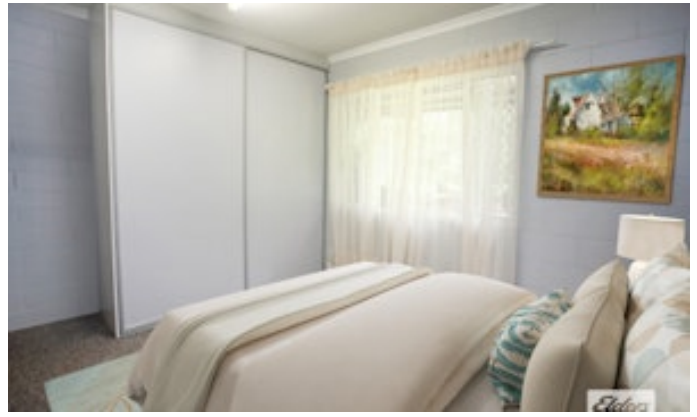
\* Orchard with an abundance of fruit trees - bananas, lemon, mango & mandarin to name a few

\* Fenced vegetable garden, cook pen with fenced run

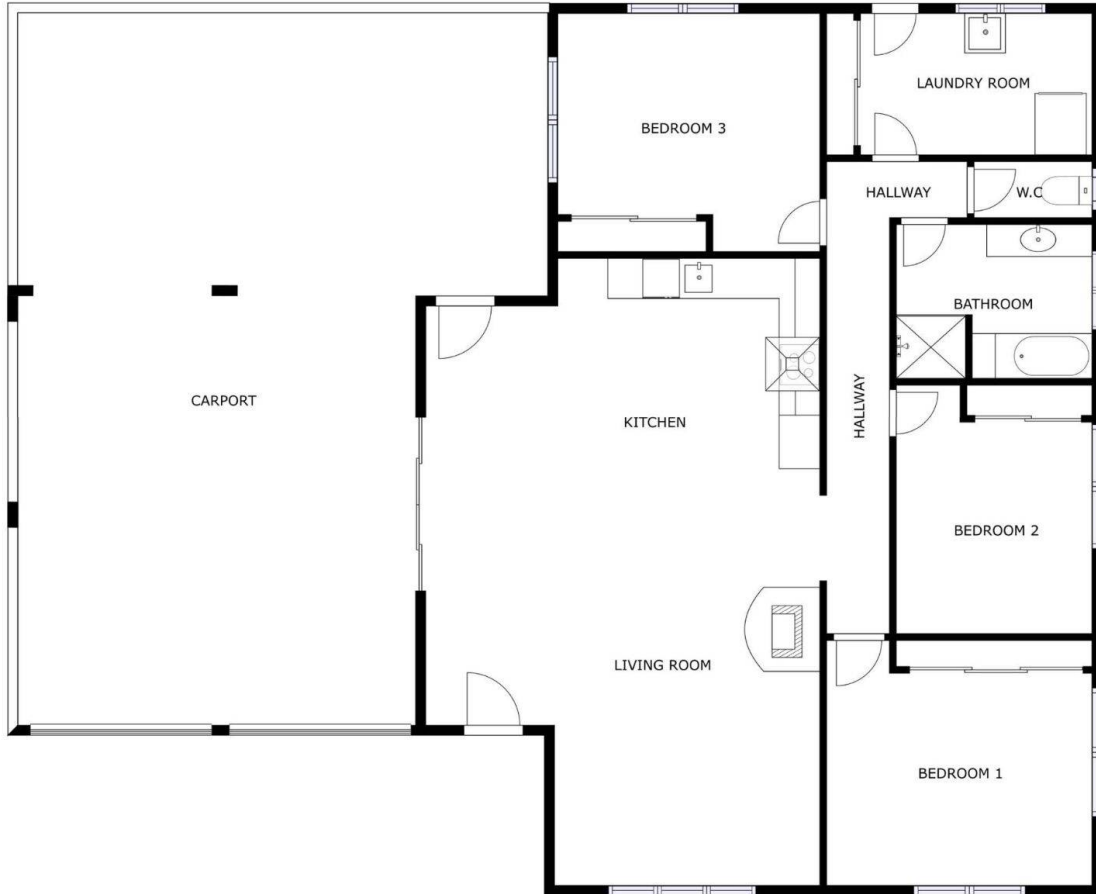
Call Exclusive Marketing Agent Shellie Nightingale on 0429 966 038 to arrange an inspection.

- Land Area 4,348.00 square metres
- Bedrooms: 3
- Bathrooms: 1
- Car Parks: 2









FLOOR PLAN

28 Newman Dr, Totga

Elders Real Estate

