



28 Imrie Close, LAKE EACHAM, QLD 4884

RENOVATORS DELIGHT IN LAKE EACHAM

Discover the potential of this solid block home in the sought after Lake Eacham area. Set on just under 6 acres, this dwelling is the perfect canvas for those looking to create their dream lifestyle property.

Featuring one spacious bedroom, a cozy fireplace, and a verandah that overlooks the picturesque grounds. With solar power already installed, this property offers a great foundation to build upon.

Outdoors, you'll find established trees, a year round flowing creek at the rear, a three bay lockable powered shed with a concrete floor, additional sheds, carport, and a shelter ready for a pony. The block is fully fenced, making it ideal for hobby farming, with plenty of land to enjoy the space and privacy.

Whether you're looking for a weekend escape, an investment project, or a tranquil lifestyle property, this "renovator's delight" offers endless potential in a highly desirable location.

Subject to council approval, subdivision may also be possible, providing an exciting opportunity for those seeking future development potential.

The particulars contained herein are supplied for information only and shall not be taken as a representation in any respect on the part of the vendor or its agent. Interested parties should contact the nominated person or office for full and current details.

TYPE: For Sale

INTERNET ID: 30P1716

SALE DETAILS

OFFERS OVER
\$680,000

CONTACT DETAILS

Malanda

21 James Street, Malanda
Malanda, QLD
07 4096 5666

Janine Rielly
0407 032 422

Key Features:

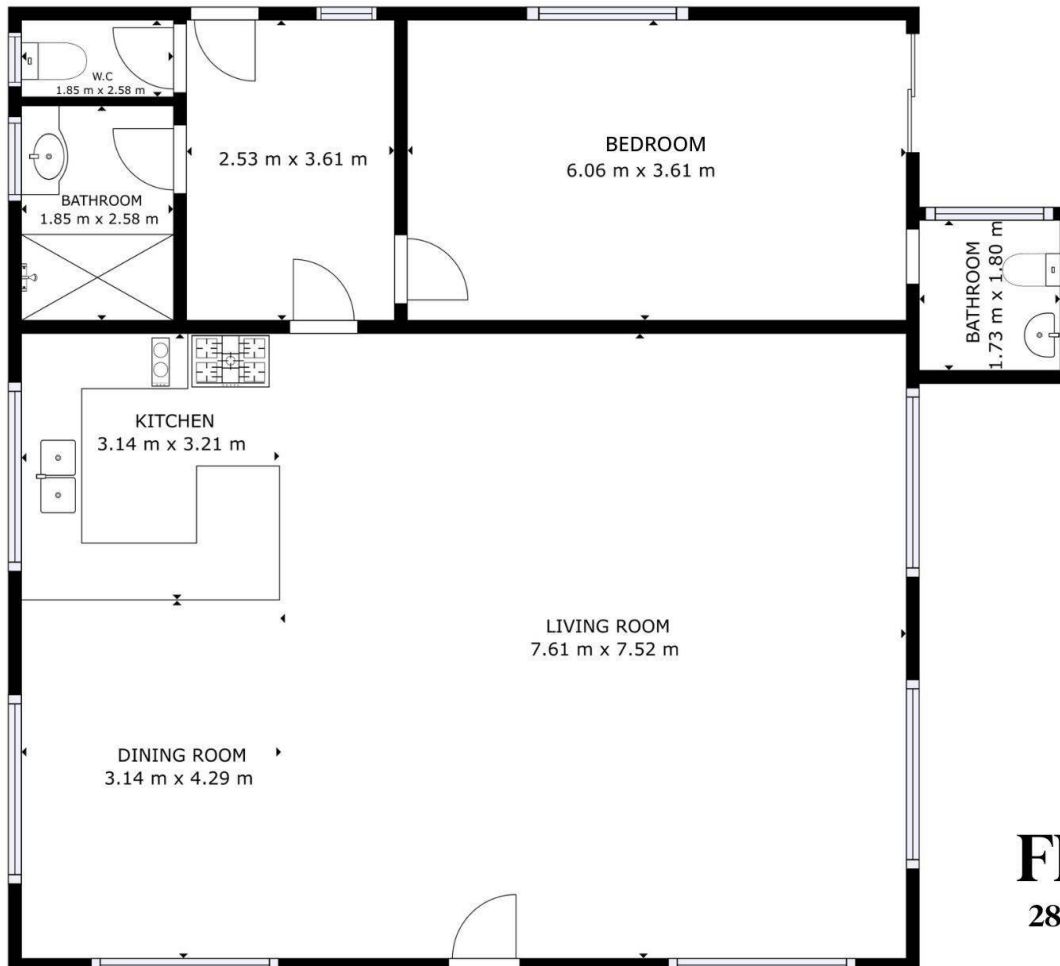
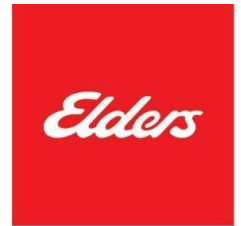
- Just under 6 acres in beautiful Lake Eacham
- Solid block home with 1 bedroom
- 2 Bathrooms
- Verandah with property views
- Fireplace & solar power
- Creek at the back
- 3 sheds including 3 bay powered shed with concrete floor
- Carport plus shelter for
- Fully fenced with established trees

Call Exclusive Agent Janine Rielly today on 0407 032 422.

- Land Area 2.4 hectares
- Building Area: 131.00 square metres
- Bedrooms: 1
- Bathrooms: 2
- Car Parks: 2
- Ensuite







FLOOR PLAN

28 Imrie Close, Lake Eacham