

## 16 Fourth Avenue, ATHERTON, QLD 4883

### Charming Home with Pool, Shed and Elevated Views

Positioned on a generous 837m<sup>2</sup> block, this lovingly maintained three-bedroom home blends everyday comfort with big ticket lifestyle extras including a great sized shed and stunning inground pool. Inside the home features stunning timber floors throughout, new electrical fittings and a fresh coat of paint. Outside you have plenty of places to relax. Take your pick from the front verandah where you can enjoy a morning coffee while enjoying the views to Bones Knob or the back gazebo overlooking the pool.

#### Key features:

- Great sized air-conditioned living and dining area with plenty of windows allowing natural light, lovely timber floors and beautiful tongue and groove feature wall and timber sliding doors leading on to the front patio.
- The original kitchen is in good condition and offers views over the backyard.
- 3 bedrooms are all generous inside, 2 with built in cupboards
- Fully renovated bathroom, tiled to ceiling with easy access walk in shower and separate toilet.

**TYPE:** For Sale

**INTERNET ID:** 30P1776

#### SALE DETAILS

**Offers Over \$600,000**

#### CONTACT DETAILS

##### Malanda

21 James Street, Malanda  
Malanda, QLD  
07 4096 5666

##### Michelle Raso

0428 116 136

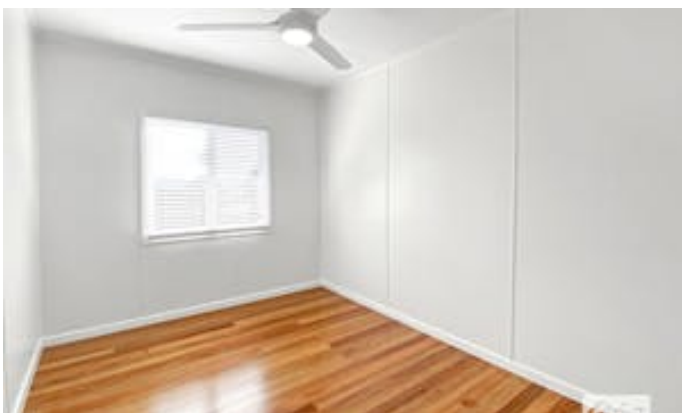
- Stunning inground pool with rock water feature
- The underneath of the home is all useable for storage with under cover parking.
- Powered shed with electric roller door and side access to the entertainment area.
- 837m<sup>2</sup> fully fenced block
- Beautifully landscaped complete with rock feature and masonry retaining walls making the whole easy to maintain and well draining.
- Solar Panels

Tucked away in a peaceful part of Atherton yet within walking distance to the local schools, shops and everyday amenities. It is clear from the moment you arrive that this home has been loved and cared for but now its time for a new family to enjoy, contact Elders Agent Michelle Raso to arrange an inspection.

Other features: Area Views, Close to Schools, Close to Shops, Openable Windows, Pool

- Land Area 837.00 square metres
- Bedrooms: 3
- Bathrooms: 1
- Car Parks: 2







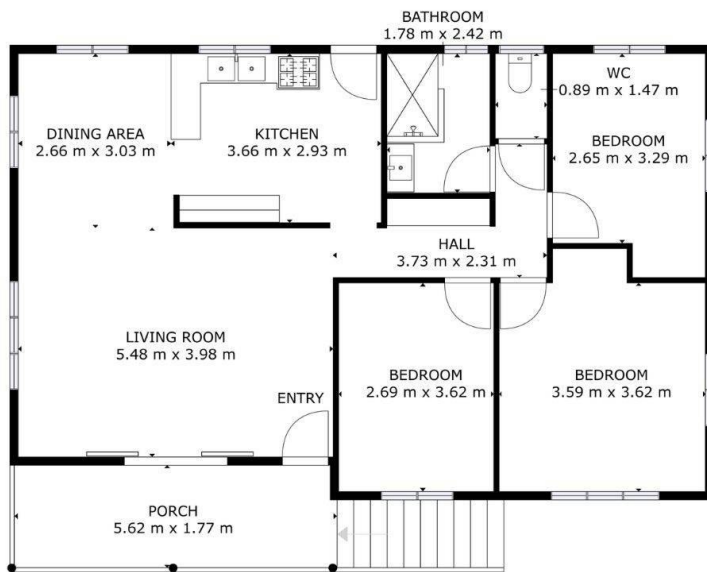




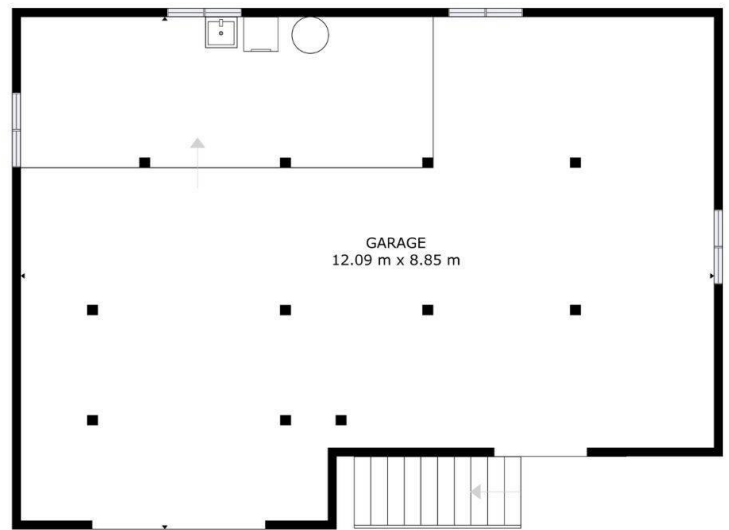
# FLOOR PLAN

16 Fourth Avenue, Atherton

Elders



TOP FLOOR



GROUND FLOOR