

73 Bellamy Drive, TOLGA, QLD 4882

Elevated in Panorama

Set in the sought-after Panorama Views Estate, this near-new three bedroom home offers easy living with picturesque mountain views. Positioned on an elevated block, the open-plan layout makes the most of natural light and fresh country breezes.

Features you'll love:

- Air-conditioned open-plan living and dining area with sliding doors to the patio
- Modern kitchen with pantry, electric oven, ample bench space and provision for a dishwasher
- Master bedroom with built-in robe, ensuite and air-conditioning
- Two additional bedrooms with built-in robes
- Main bathroom with easy-access shower and separate toilet
- Internal laundry located just off the kitchen, with built-in linen storage
- Tiled patio area, perfect for relaxed outdoor dining or entertaining

TYPE: For Sale

INTERNET ID: 30P1873

SALE DETAILS

**Open Saturday 9.00am
- 9.30am**

CONTACT DETAILS

Malanda

21 James Street, Malanda
Malanda, QLD
07 4096 5666

Michelle Raso

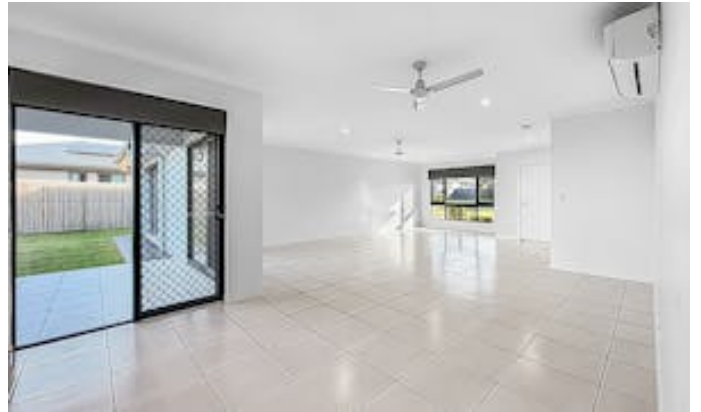
0428 116 136

- Double garage with remote-access panel-lift door and rear roller door providing backyard access
- Security screens throughout
- Fully fenced 600m² block with established fruit trees
- 6.6kw Solar System

This low-maintenance home is ideal for downsizers, first-home buyers or investors seeking a ready-made rental. Vacant and ready for a quick sale, contact exclusive Elders agent Michelle on 0428 116 136 for more information or to arrange an inspection.

Other features: Area Views, Carpeted, Close to Schools, Close to Shops

- Land Area 600.00 square metres
- Building Area: 192.00 square metres
- Bedrooms: 3
- Bathrooms: 2
- Car Parks: 2
- Ensuite









FLOOR PLAN

73 Bellamy Drive, Tolga

