



28 Imrie Close, LAKE EACHAM, QLD 4884

BLANK CANVAS ON PEACEFUL ACREAGE

Discover the potential of this solid block home in the highly sought after Lake Eacham area, where natural beauty and peaceful surroundings create the perfect lifestyle escape. Set on just under 6 acres, this property offers a rare opportunity to secure a private parcel of land with established features and room to grow.

Positioned to embrace its serene surroundings, this home is the perfect canvas for you to bring your vision to life. With picturesque verandah views, solar already installed, and a solid foundation in place, the property is ready for you to renovate and make it your own.

Key Features:

- Just under 6 acres
- Solid block home
- One spacious bedroom
- Two bathrooms

TYPE: For Sale

INTERNET ID: 30P1971

SALE DETAILS

Offers Over \$775,000

CONTACT DETAILS

Malanda

21 James Street, Malanda
Malanda, QLD
07 4096 5666

Janine Rielly

0407 032 422

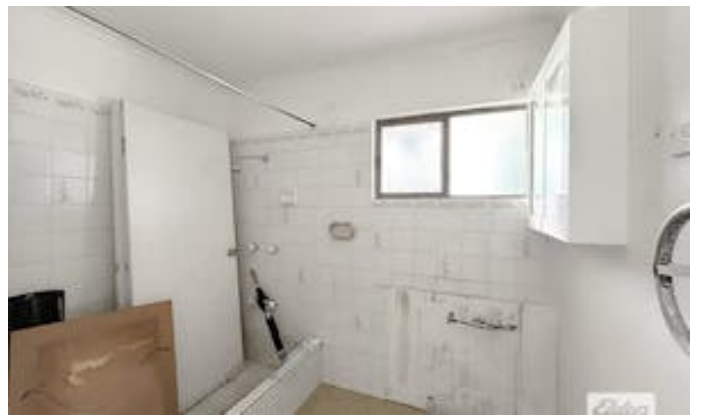
- Verandah with scenic property views
- Solar power system installed
- Year round flowing creek at the rear
- Beautiful natural waterfall
- Three sheds, including a 3-bay powered shed with concrete floor
- Additional sheds for storage or workspace
- Undercover carport
- Fully fenced property
- Established trees throughout
- Shelter suitable for a pony or small livestock

Outdoors, the property truly shines with its blend of usable land, natural water features, and established infrastructure. Subject to council approval, there may also be potential for subdivision, offering exciting possibilities for future development or investment. Whether you're seeking a weekend escape, a lifestyle upgrade, or a project with promise, this renovator's delight is packed with opportunity in a tightly held location.

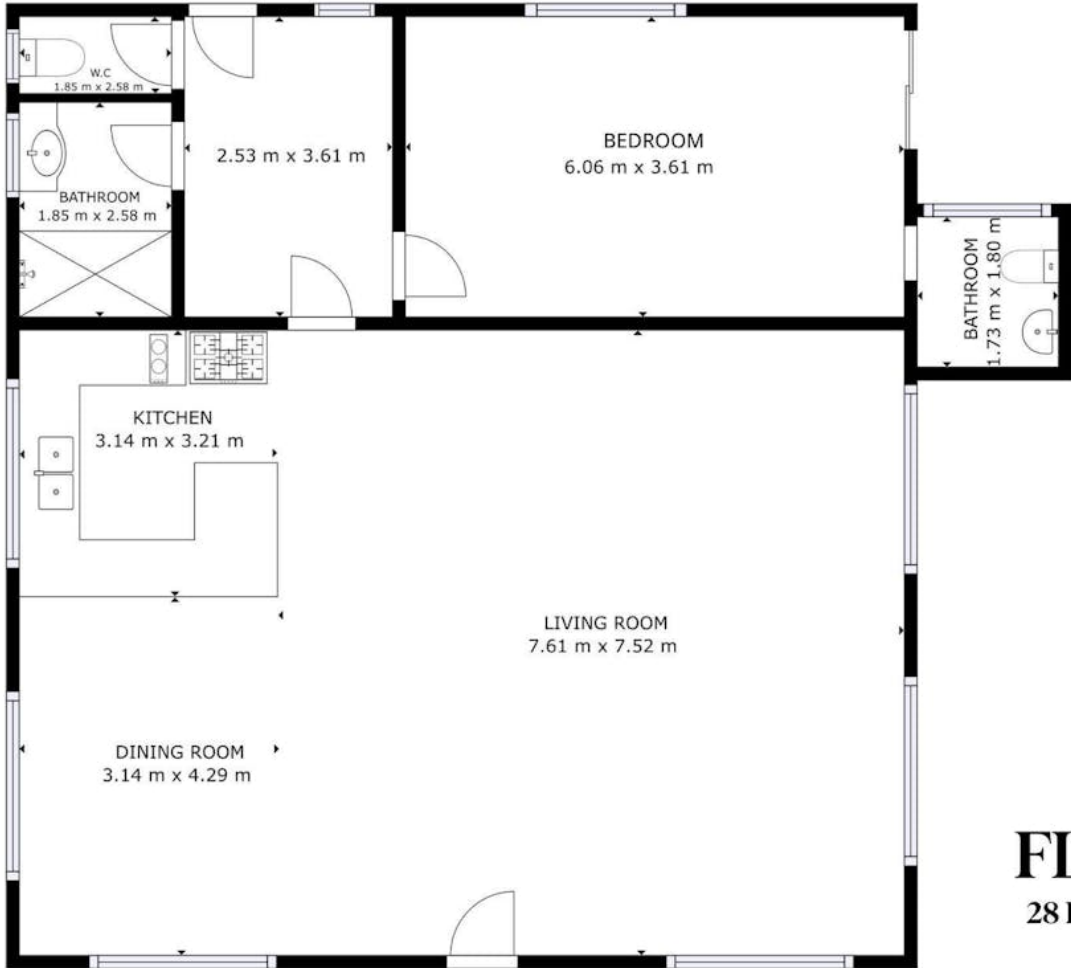
Call exclusive agent Janine Rielly on 0407 032 422 to arrange an inspection.

Other features: Openable Windows

- Land Area 5.93 acres
- Building Area: 131.00 square metres
- Bedrooms: 1
- Bathrooms: 2
- Car Parks: 2
- Single carport
- Ensuite







FLOOR PLAN

28 Imrie Close, Lake Eacham

The particulars contained herein are supplied for information only and shall not be taken as a representation in any respect on the part of the vendor or its agent. Interested parties should contact the nominated person or office for full and current details.