

24 Gibson Street, ATHERTON, QLD 4883

Classic Charm Meets Modern Comfort

A home with street appeal, charm and an impressive list of features, this beautifully presented property is set on a fully fenced 1,083sqm block with great street frontage that allows excellent access for boat and caravan storage. The home combines timeless character with quality improvements including a brand new roof offering the perfect blend of space, functionality and everyday comfort, all within easy reach of local amenities.

Step inside to discover stunning hardwood timber floors and a recently renovated kitchen that forms the heart of the home. You'll love the feeling of not being boxed in by neighbouring properties and notice the refreshing cross-breezes that flow naturally throughout the home. Outside, the features continue to impress. A powered 6m x 6m shed, under-house storage space and a recently extended alfresco entertaining area are perfect for hosting family and friends.

Features Include:

- Open Plan Living, Dining and Kitchen
- Modern Galley Style kitchen with Gas Cooktop, Dishwasher and plenty of bench

The particulars contained herein are supplied for information only and shall not be taken as a representation in any respect on the part of the vendor or its agent. Interested parties should contact the nominated person or office for full and current details.

TYPE: For Sale

INTERNET ID: 30P1977

SALE DETAILS

Offers Over \$630,000

CONTACT DETAILS

Malanda

21 James Street, Malanda
Malanda, QLD
07 4096 5666

Michelle Raso

0428 116 136

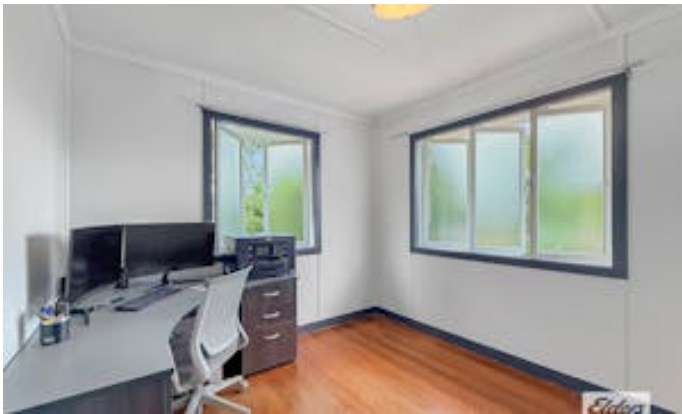
space

- Renovated Bathroom with Bathtub and separate toilet
- 3 Bedrooms, 2 with built in robes and the master with air-conditioning.
- Brand new laundry complete with custom built cabinetry and linen storage
- Single Carport plus plenty of storage/large Workshop area under the home
- Extended alfresco area perfect for a firepit, bbq's and entertaining
- 6mx6m shed
- Fully fenced block with electric gate access
- 1083m2 block.

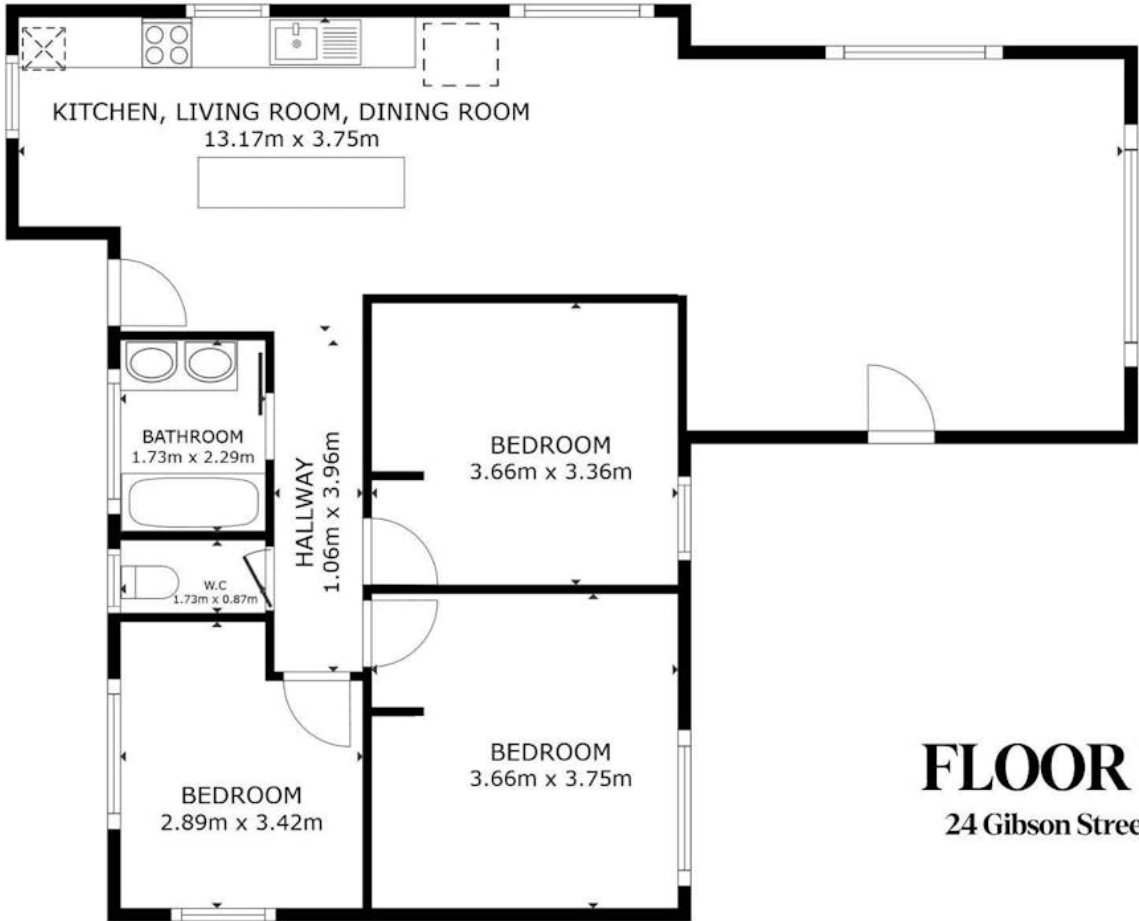
This is an ideal home for first home buyers, perfectly positioned just a short two-minute drive or an easy 10-minute walk to the local IGA, caf s and shops, this is a property that effortlessly combines lifestyle and location. Contact Elders Agent Michelle Raso to arrange an inspection

- Land Area 1,083.00 square metre
- Bedrooms: 3
- Bathrooms: 1
- 3 car garage









FLOOR PLAN

24 Gibson Street, Atherton

The particulars contained herein are supplied for information only and shall not be taken as a representation in any respect on the part of the vendor or its agent. Interested parties should contact the nominated person or office for full and current details.