

## 1 Adcock Close, MOOMIN, QLD 4887

### Peaceful Half-Acre Living Backing onto State Forest

Set on the outskirts of Herberton and backing directly onto state forest, this lovingly maintained three-bedroom brick veneer home offers space, privacy and a true rural lifestyle. With walking and riding trails accessible from your back gate, plus beautiful range views and established gardens, this is a property designed for those seeking a quieter way of life.

Positioned on a fully fenced 2,000m<sup>2</sup> allotment in peaceful Moomin, just 17km from Atherton's main street, the home combines practical living with relaxed country charm.

Features include:

- Front porch with extended deck, the perfect spot to unwind and take in the mountain range views
- Open plan kitchen and dining area
- Galley-style kitchen complete with dishwasher and large pantry
- Cosy front lounge with fireplace

The particulars contained herein are supplied for information only and shall not be taken as a representation in any respect on the part of the vendor or its agent. Interested parties should contact the nominated person or office for full and current details.

**TYPE:** For Sale

**INTERNET ID:** 30P2002

**SALE DETAILS**

**Offers Over \$570,000**

**CONTACT DETAILS**

**Malanda**

21 James Street, Malanda  
Malanda, QLD  
07 4096 5666

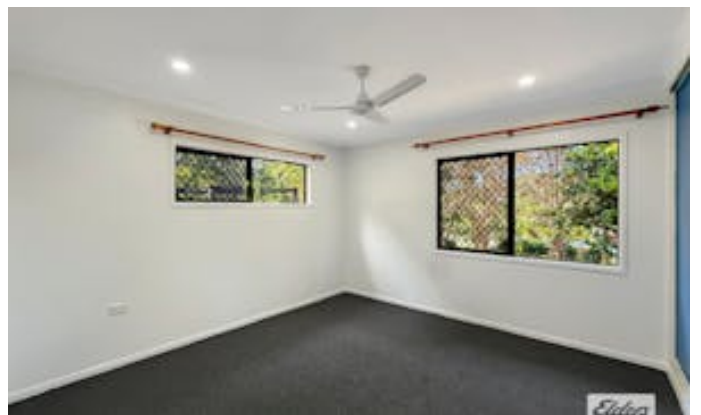
**Michelle Raso**

0428 116 136

- Three bedrooms, all with ceiling fans and 2 with built ins
- Security screens throughout
- Large air-conditioner positioned to cool the whole home
- Huge rear patio featuring a built-in pizza oven, ideal for entertaining
- 3 Bay Colorbond Shed with additional carport
- Chook pen with fenced run
- Raised vegetable garden beds
- Fully fenced 2,000m<sup>2</sup> yard

Whether you are a first home buyer, retiree, or simply looking to escape the hustle and enjoy more space and privacy, this property delivers an affordable lifestyle opportunity in a peaceful rural setting. Contact exclusive agent Michelle Raso today to arrange your inspection.

- Land Area 2,000.00 square metres
- Bedrooms: 3
- Bathrooms: 1
- Car Parks: 2







# FLOOR PLAN

1 Adcock Close, Moomin

