



2 Providence Court, KATHERINE, NT 0850

KATHERINE SOCIALITES this is the home for you!!!

Exquisite entertainer, setting the benchmark in town with impeccable standards. Crafted with custom design and block rendered construction, featuring high-quality fittings and a stylish aesthetic.

The spacious layout includes a gourmet kitchen, expansive living area, and formal dining, seamlessly connecting to a sprawling kitchen/living/entertaining space through bi-fold doors. Perfect for enjoying tropical evenings and sunny days or securing for cool, air-conditioned comfort during wet seasons.

Entertainment is elevated with gas cooking, stainless steel range hood, ambient sensor lighting, ample storage, wall-mounted TV, air conditioning, fans, and tiled floors, all overlooking a serene private garden.

The oversized master bedroom opens onto a secluded side entertainment area with a luxurious hot tub, complemented by a sophisticated ensuite, built-in robes, and custom shelving. Two to three additional bedrooms boast air conditioning, tiled floors, and built-in robes.

TYPE: Sold

INTERNET ID: 35P1170

SALE DETAILS

\$749,000

CONTACT DETAILS

**Elders Real Estate
Katherine**

2/17 First St
Katherine, NT
08 8972 3692

Alison Ross
0417 847 950

An impressive grand entrance widens the home, accentuating its stunning design. From the street, a spacious double garage with automatic roller doors and low-maintenance front gardens greet you. The property is securely fenced and backs onto parkland, with schools within walking distance and neighboring homes undergoing significant upgrades.

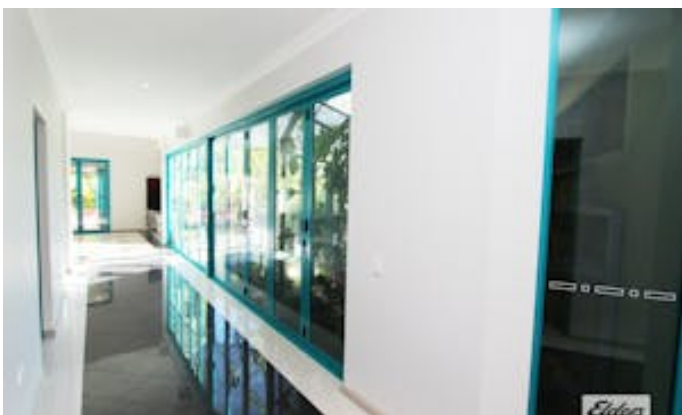
Rarely available on the market, this expansive residence offers a unique opportunity.

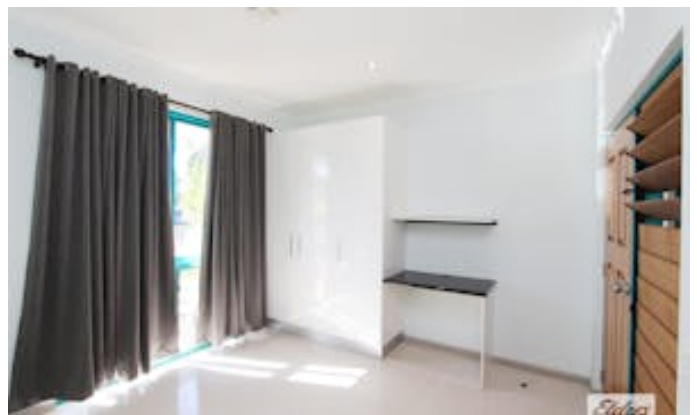
Currently rented for \$800.00 p/w until the 26th of February 2026

Contact our sales team today to schedule a viewing!

- Land Area 801.00 square metres
- Building Area: 136.00 square metres
- Bedrooms: 3
- Bathrooms: 2
- Car Parks: 2











FLOOR PLAN ON SITE



FLOOR PLAN