



## 20 Burnet Court, KATHERINE, NT 0850

Quiet Cul-De-Sac location - ready to move into

Positioned in a quiet cul-de-sac, this well-presented home is an ideal option for families or first-home buyers wanting to secure their own property in Katherine East.

### Key Features

3 bedrooms, each with built-in robes, carpet & blinds

Central kitchen with island breakfast bar, overlooking dining & lounge

Open-plan living with sliding glass doors to the backyard â## great family visibility

Split-system air conditioning throughout

Internal laundry for added convenience

**TYPE:** For Sale

**INTERNET ID:** 35P1940

### SALE DETAILS

**\$420,000**

### CONTACT DETAILS

**Elders Real Estate  
Katherine**

2/17 First St  
Katherine, NT  
08 8972 3692

**Alison Ross**  
0417 847 950

## Outdoors

Well-fenced backyard with Colorbond fencing for privacy & security

Double carport with double gate access to the rear yard

Lock-up garden shed for extra storage

## Fast Facts

Land area: 882 m<sup>2</sup> (Low Density Residential)

Year built: 1997

Vacant possession - move in straight away

A solid, low-maintenance home in a popular Katherine East location, offering both comfort and practicality.

## Enquire/Inspect:

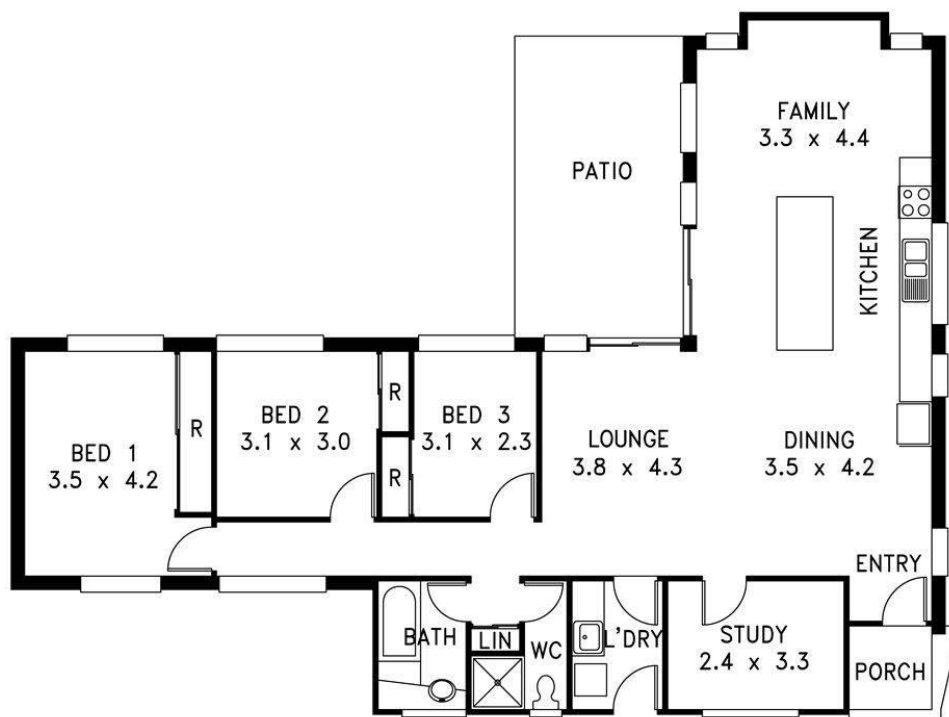
Contact Alison Ross on 0417 847 950 or James Todd on 0448 590 634.

- Land Area 882.00 square metres
- Bedrooms: 3
- Bathrooms: 1
- Car Parks: 2
- Double carport









UPRN

1007723

