



225 Cragborn Road, KATHERINE, NT 0850

Rural Lifestyle on 15.61ha

Just 10 minutes from Katherine town centre, this well-presented property offers the perfect balance of peaceful rural living and modern comfort. Set on 15.61 hectares, it includes a spacious custom-built home, separate cottage, and excellent infrastructure â## all ready to move into.

Main Residence

- Custom design, quality-built home
- 2 large bedrooms, 1 bathroom
- Well-equipped kitchen with generous bench space, storage, electric cooktop, rangehood & dishwasher
- Spacious lounge & formal dining areas â## family sized
- Internal laundry, ceramic floor tiles throughout
- Split-system air conditioning for year-round comfort
- Tinted windows & stylish black screens

The particulars contained herein are supplied for information only and shall not be taken as a representation in any respect on the part of the vendor or its agent. Interested parties should contact the nominated person or office for full and current details.

TYPE: For Sale

INTERNET ID: 35P1941

SALE DETAILS

\$750,000

CONTACT DETAILS

**Elders Real Estate
Katherine**

2/17 First St
Katherine, NT
08 8972 3692

Alison Ross
0417 847 950

- Solar power feeding into the grid â## lower electricity bills
- Front patio â## perfect for sunrise mornings & evening relaxation

Additional Accommodation & Infrastructure

- 1-bedroom cottage â## ideal for extended family or guests

Shed complex with:

- Double carport
- One-bay lock-up storage with concrete floor

Equipped bore with automatic garden watering system

Rainwater storage servicing both the home & cottage

Why You'll Love It

- Spacious, modern living on a neat 15.61ha block
- Rural lifestyle just 10 minutes to town
- Well-maintained and ready to move into
- Excellent combination of comfort, practicality & lifestyle
- This is a well-priced rural lifestyle property that won't last long.

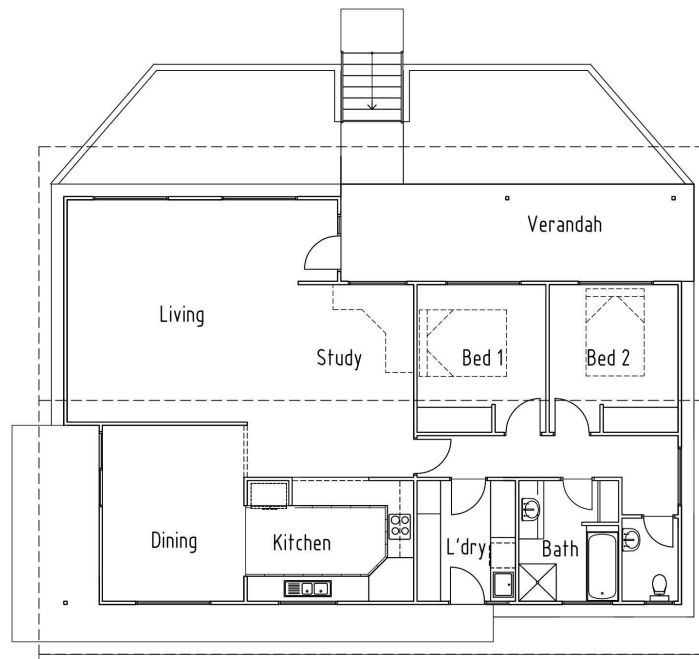
Other features: Window Treatments

- Land Area 15.61 hectares
- Bedrooms: 3
- Bathrooms: 2
- Car Parks: 2

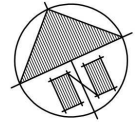


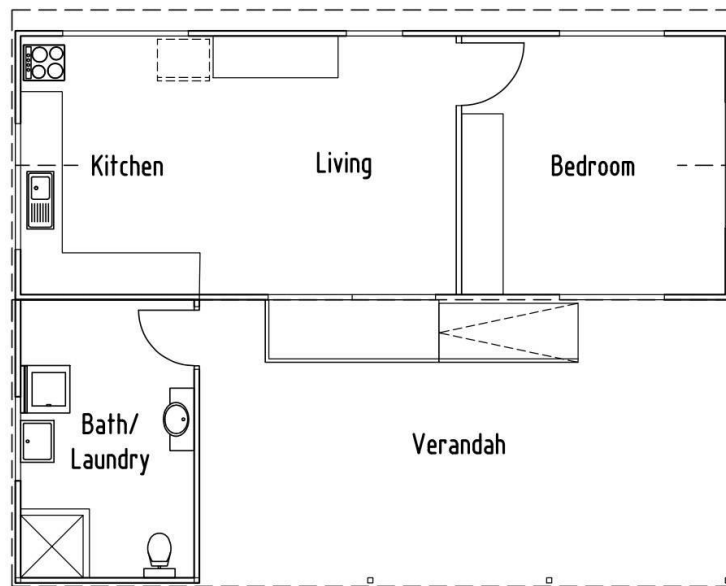






MAIN RESIDENCE





COTTAGE