



113 & 115 Church Street, WOLLONGONG, NSW 2500

PRIME COMMERCIAL PROPERTIES

Elders Real Estate Wollongong are PROUD to offer these two prime commercial properties.

- Re-develop or occupy
- Zoned B4 mixed use zoning
- 113 Church Streetâ##417m2
- 115 Church Street â## 463m2

Total land size approx. 880m2

Properties consist of two modern, well-presented solid, commercial houses and both used as professional law firms.

Located in the Central CBD opposite popular McCabe Park, only metres to Wollongong CBD Mall shopping precinct, railway station and both Public and Private Hospitals.

TYPE: Sold

INTERNET ID: 36P1818

SALE DETAILS

Expressions of Interest

CONTACT DETAILS

Elders Real Estate

Wollongong

353 Crown Street

WOLLONGONG, NSW

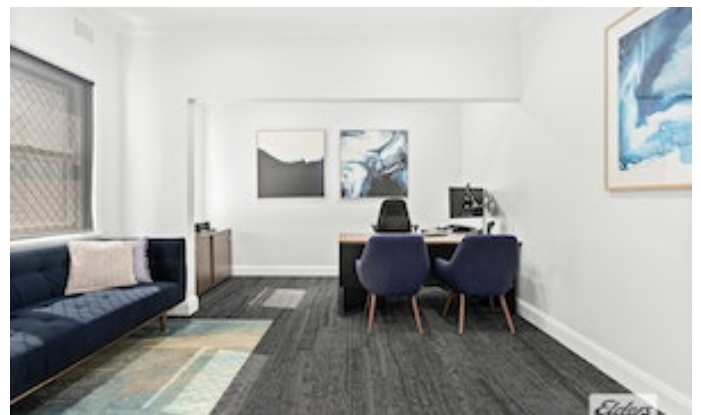
02 4228 7878

Lou Niceski

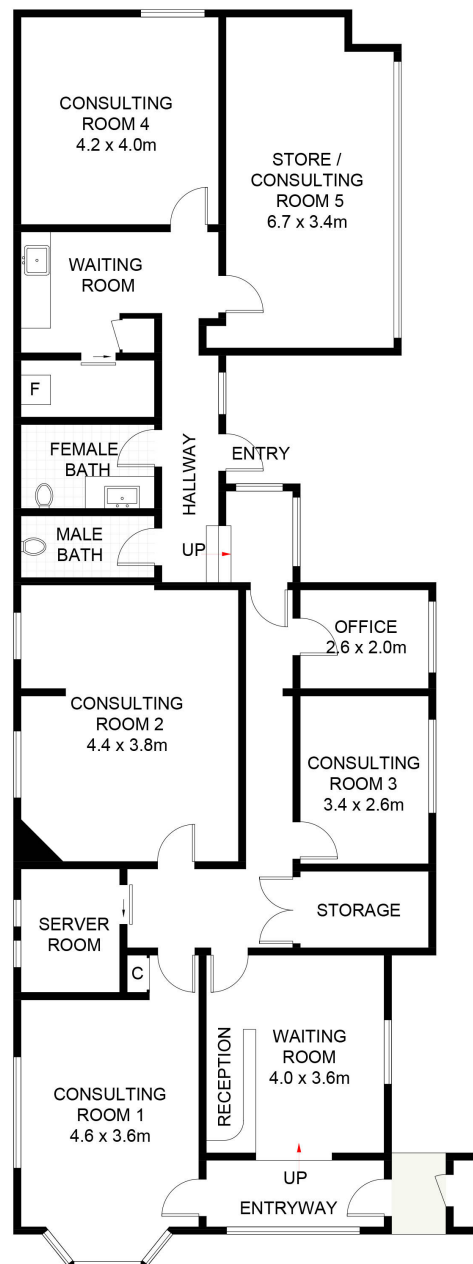
0414 287 093

Call today for a private inspection.

- Land Area 880.00 square metres
- Commercial Type:
- Building Area: 250.00 square metres



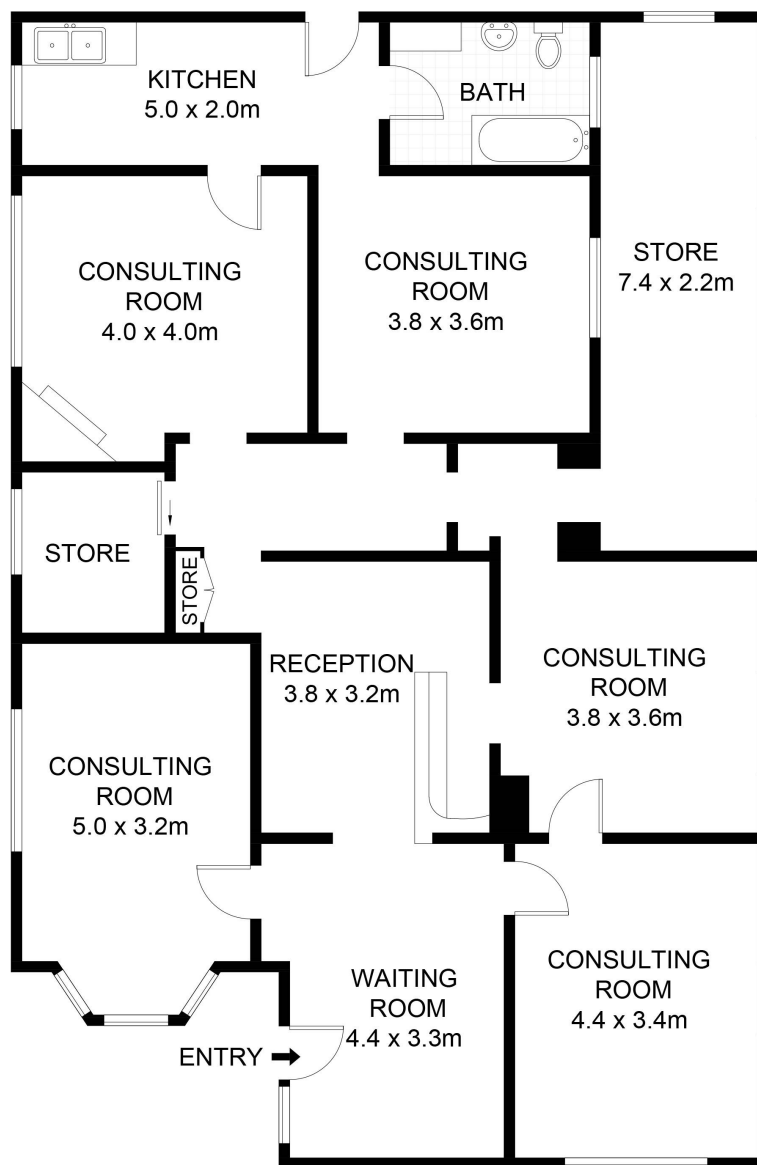




113 Church Street, Wollongong

Scale in metres. Indicative only. Dimensions are approximate. All information contained herein is gathered from sources we believe to be reliable. However, we cannot guarantee its accuracy and interested persons should rely on their own enquiries. Some images may contain digital furniture.





115 Church Street, Wollongong

Scale in metres. Indicative only. Dimensions are approximate. All information contained herein is gathered from sources we believe to be reliable. However, we cannot guarantee its accuracy and interested persons should rely on their own enquiries. Some images may contain digital furniture.