



9/6-10 Catherine Street, GWYNNEVILLE, NSW 2500

PERFECT INVESTMENT

Elders Real Estate Wollongong are proud to offer you this well-presented two bedroom apartment. Positioned on 2nd floor of a very clean and tidy yet quite block.

Property features:

- Two spacious bedrooms with BIW
- Sleek modern kitchen
- Open plan living, incorporating dining, lounge leading out to sunny terrace
- Quality timber floors, carpets to bedrooms
- Internal laundry, security intercom
- Air-conditioning
- Lock-up garage

TYPE: Sold

INTERNET ID: 36P1936

SALE DETAILS

[Expressions of Interest](#)

CONTACT DETAILS

**Elders Real Estate
Wollongong**
353 Crown Street
WOLLONGONG, NSW
02 4228 7878

Lou Niceski
0414 287 093

Located within super proximity to Wollongong University. Walk to Gwynneville cafes, village and shops. Short stroll to Keiraville village, Beaton Park sporting complex.

Only minutes to Wollongong CBD Mall shopping precinct, local schools, shops, and parks, railway station, free shuttle bus, and both Public & Private Hospitals.

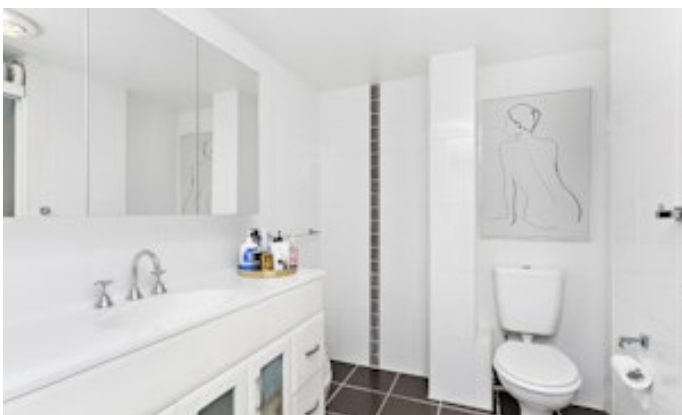
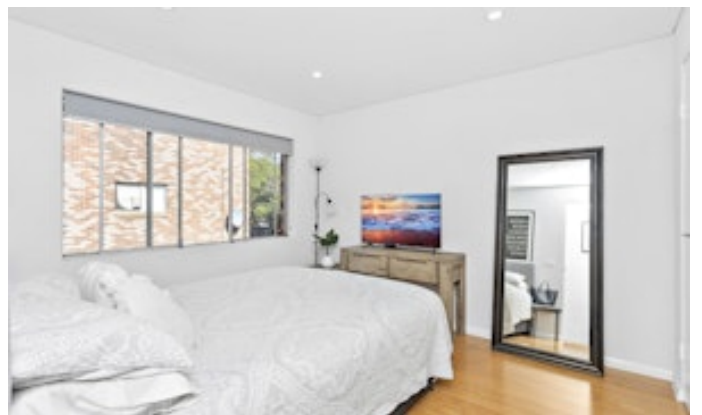
A sensational investment opportunity for the astute first home buyer or investor, better than money in the BANK!

This property definitely is a must see!

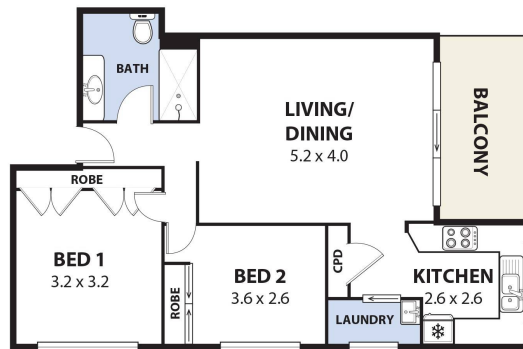
Call today and schedule your private inspection.

Other features: Close to Schools, Close to Shops, Close to Transport

- Bedrooms: 2
- Bathrooms: 1
- Single garage







9/10 Catherine Street, Gwynneville

INTERNAL SPACE 82m2 (approx)

Plans shown are for presentation purposes and are not part of any legal document or title and are subject to errors, omissions, inaccuracies and should not be used as sole and accurate reference. Particulars given are for general information only and do not constitute any representation on the part of the vendor or agent. No liability will be accepted.

AR2