

280 Crown Street, WOLLONGONG, NSW 2500

PRIME EXPOSURE IN WOLLONGONG CBD!!!

HUGE LEVEL 1 STUDIO SPACE - AN OPPORTUNITY NOT TO BE OVERLOOKED

Located in Wollongong CBD, Hospital and close to bus and station.

- * Large open floor space - ideal for fitness centre, dance/yoga studio, massage, function centre or office use
- * High ceilings, kitchen facility & large bathrooms/changerooms (can fit shower)
- * Abundance of natural light
- * Great signage potential
- * Central Wollongong location being minutes walk to Wollongong Hospital & Wollongong Private Hospital & newly completed shopping centre

To book an inspection please call Elders Real Estate Wollongong on 42287878

- Available Now

TYPE: For Lease

INTERNET ID: 36P1948

RENTAL DETAILS

Rent / Lease:

[Expressions Of Interest](#)

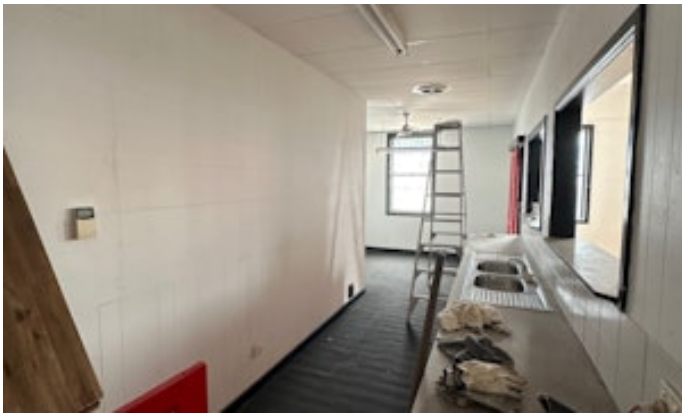
CONTACT DETAILS

**Elders Real Estate
Wollongong**

353 Crown Street
WOLLONGONG, NSW
02 4228 7878

Daniel Niceski
0408 422 876

- Commercial Type:
- Building Area: 272.00 square metres



280 Crown Street, Wollongong

