

186-188 Cowper Street, WARRARONG, NSW 2502

Warrarong CDB Commercial Property!!!

Elders Real Estate Wollongong proudly presents this rare opportunity to secure a solid, high-profile commercial property in the heart of Warrarong CBD.

Previously home to Westpac Bank, this well-constructed property offers flexible commercial or retail space positioned within the Warrarong Town Centre Masterplan and Streetscape Upgrade project ensuring strong future growth and exposure.

Located directly opposite Warrarong Plaza and surrounded by leading national bulky goods retailers, this property guarantees outstanding brand presence and connectivity.

Property Features

- Land Area 475m2
- Zoned B3 Commercial Core
- Multiple onsite parking with rear lane access
- Open plan professional/commercial layout

TYPE: For Sale

INTERNET ID: 36P2804

SALE DETAILS

[Expressions Of Interest](#)

CONTACT DETAILS

**Elders Real Estate
Wollongong**
353 Crown Street
WOLLONGONG, NSW
02 4228 7878

Lou Niceski
0414 287 093

- Full air-conditioning, kitchenette, and ample storage
- Male & female amenities
- Large secure vault strong room + multiple safes

Internal area divided into TWO (2) commercial suites.

- Suite 1) LEASED
- Suite 2) Ground Floor 148 m2 approx.
- First floor 188m2 Approx

Total- Net Lettable area 267m2

Would suit a keen investor or smart business owner looking to establish a commercial base in the area.

Commercial/Residential Re-development Potential (S.T.C.A)

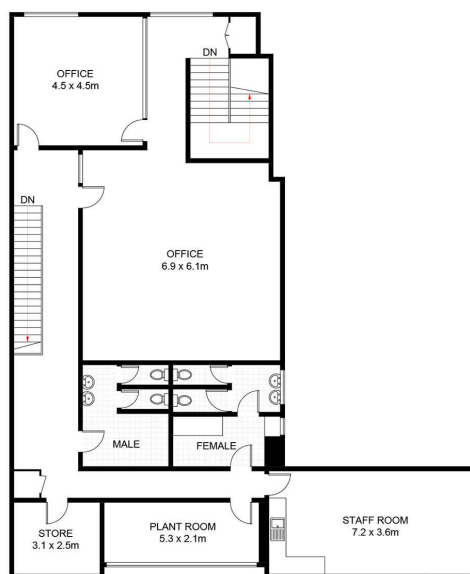
Located in the Central Warrawong CBD business precinct, minutes to Port Kembla port operations & transport infrastructure, and in super close proximity to beaches, schools, shops, and cafes. 10 minutes south of Wollongong CBD, both Public and Private hospitals and Wollongong University

Sydney CBD, and airport only 1 hour away.

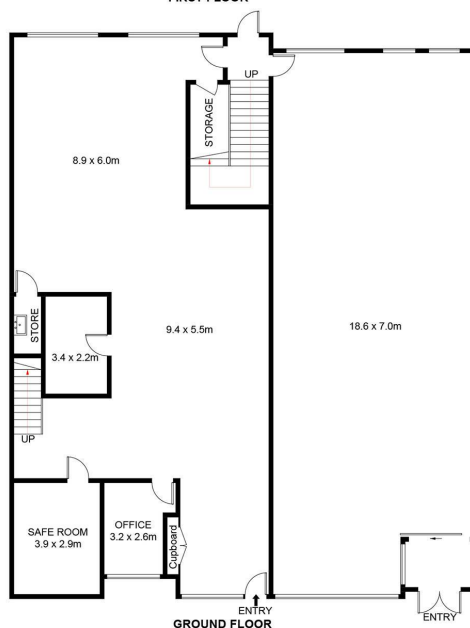
Contact our team and schedule a private viewing.

- Land Area 457.00 square metres
- Commercial Type:
- Building Area: 486.00 square metres





FIRST FLOOR



GROUND FLOOR



186-188 Cowper Street, Warrawong

Scale in metres. Indicative only. Dimensions are approximate. All information contained herein is gathered from sources we believe to be reliable. However, we cannot guarantee its accuracy and interested persons should rely on their own enquiries. Some images may contain digital furniture.