

12B Mallangong Close, FIGTREE, NSW 2525

Spacious Torrens Title Duplex

Elders Real Estate Wollongong are proud to present this spacious Torrens title duplex, offering a perfect combination of space, comfort, and modern living.

Designed for versatility, this well-appointed home is ideal for families, downsizers, upsizers, or investors seeking a quality property in a convenient, city-fringe location.

Property Features:

- Four generous bedrooms, with built-in wardrobes; master featuring ensuite
- Expansive open plan living, dining, and kitchen area with floating floors
- Well-appointed kitchen with walk-in pantry and stainless-steel appliances
- Main bathroom with separate bath and shower
- Covered rear deck flowing off the main living area - perfect for entertaining
- Second covered outdoor area leading to a fully fenced, grassed backyard

TYPE: For Sale

INTERNET ID: 36P3005

SALE DETAILS

[Expressions Of Interest](#)

CONTACT DETAILS

**Elders Real Estate
Wollongong**
353 Crown Street
WOLLONGONG, NSW
02 4228 7878

Lou Niceski
0414 287 093

- Large downstairs rumpus or second living area
- Internal laundry with additional shower and toilet
- Carpeted bedrooms and air conditioning for year-round comfort

Currently tenanted until August 2026, offering an immediate rental return.

Located in the sought-after suburb of Figtree, this home delivers the perfect balance of convenience and lifestyle. Enjoy close proximity to Figtree Grove Shopping Centre, local cafes, parks, and reserves.

Positioned just minutes from Wollongong CBD, with easy access to Wollongong Public and Private Hospitals, public transport, quality schools, and sporting facilities. The stunning Wollongong coastline, University of Wollongong, and TAFE are all within a short drive.

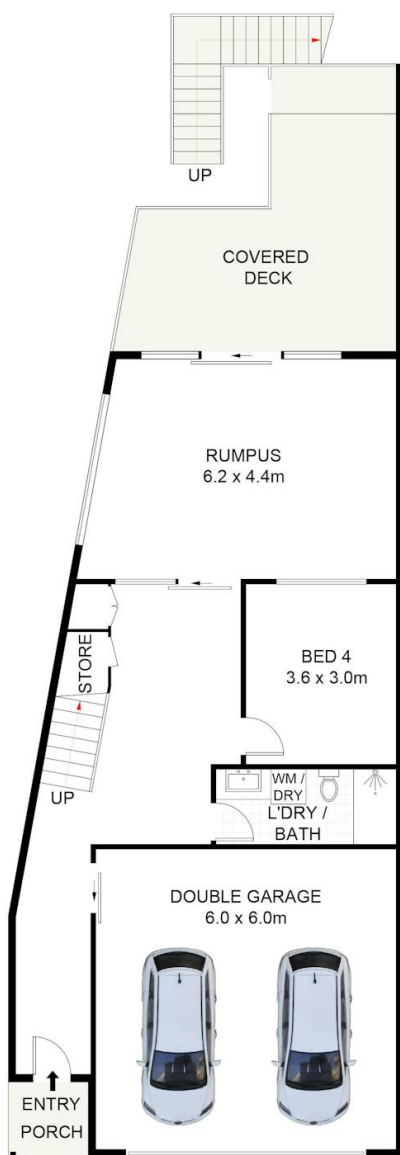
Sydney CBD and the airport are approximately one hour away.

This is a must-see opportunity for those seeking low-maintenance living.

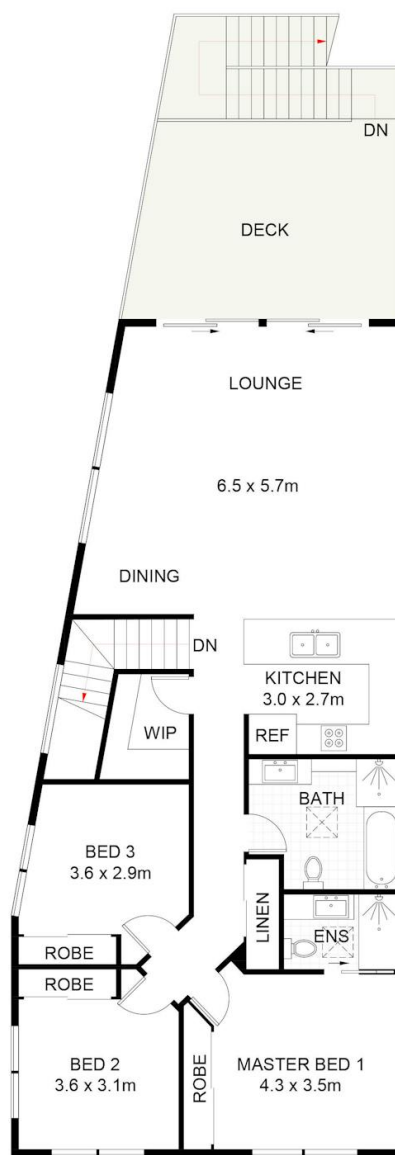
Contact us today to arrange your private inspection.

- Bedrooms: 4
- Bathrooms: 3
- Double garage





GROUND FLOOR



FIRST FLOOR



12B Mallangong Close, Figtree

Scale in metres. Indicative only. Dimensions are approximate. All information contained herein is gathered from sources we believe to be reliable. However, we cannot guarantee its accuracy and interested persons should rely on their own enquiries. Some images may contain digital furniture.