

1/15 Robinson Street, WOLLONGONG, NSW 2500

Entry-Level Ground Floor Apartment

Elders Real Estate Wollongong is proud to present this well-positioned two-bedroom apartment, ideally located on the city fringe just minutes from Wollongong CBD, hospitals, and key transport links.

Positioned on the ground floor within a well-maintained brick complex of 12, this apartment offers a practical layout, low-maintenance living and outstanding convenience. It presents an excellent opportunity for first home buyers, downsizers or investors.

Property Features:

- Two spacious bedrooms, both with built-in wardrobes
- Open-plan living and dining area
- Modern, practical kitchen
- Well-appointed combined bathroom
- Shared ground floor laundry

The particulars contained herein are supplied for information only and shall not be taken as a representation in any respect on the part of the vendor or its agent. Interested parties should contact the nominated person or office for full and current details.

TYPE: For Sale

INTERNET ID: 36P3006

SALE DETAILS

[Expressions Of Interest](#)

CONTACT DETAILS

**Elders Real Estate
Wollongong**
353 Crown Street
WOLLONGONG, NSW
02 4228 7878

Lou Niceski
0414 287 093

- Designated car space
- Well-maintained brick complex of 12 apartments

Currently tenanted at \$540 per week on an expired lease, the property provides immediate rental income with flexibility for owner-occupiers or investors.

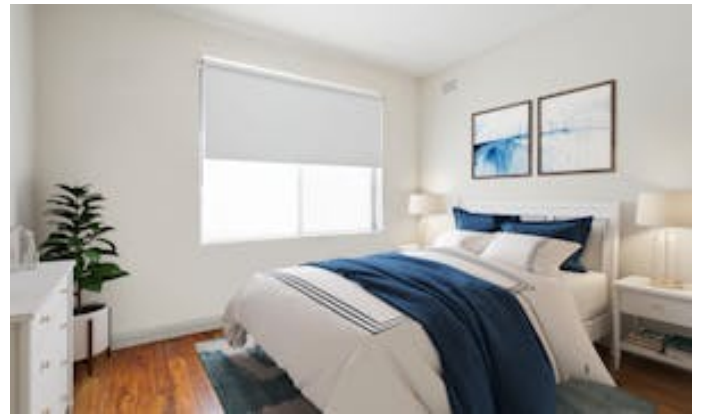
Perfectly positioned within Wollongong's medical precinct, the property is within walking distance of Wollongong Public and Private Hospitals, Wollongong railway station, and bus transport links.

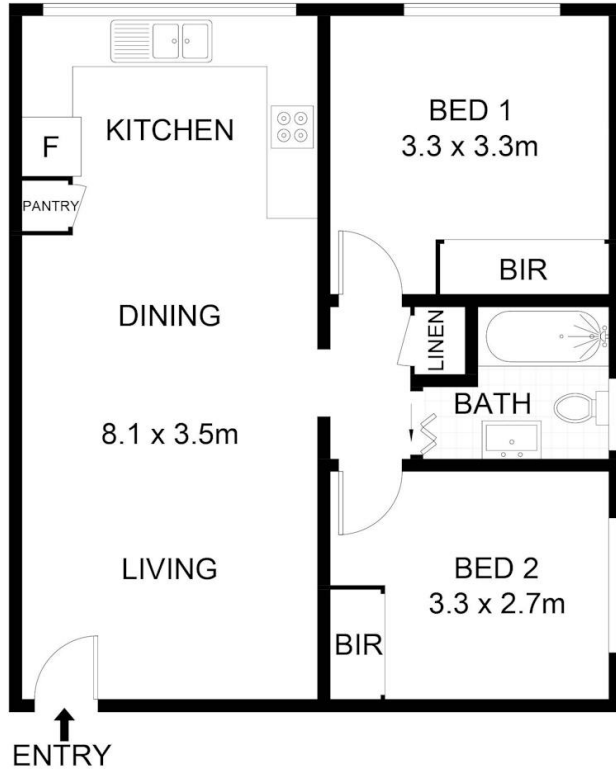
Enjoy easy access to Crown Street Mall, TAFE, the University of Wollongong, the M1 motorway, schools, shops, restaurants, caf  s, and Wollongong's renowned beaches. Sydney CBD and Sydney Airport are also approximately one hour away.

This is an outstanding opportunity to secure a strong entry level apartment in a city fringe and convenient location.

Contact us today to arrange your private inspection.

- Bedrooms: 2
- Bathrooms: 1
- Car Parks: 1





(NOT SHOWN IN ACTUAL LOCATION / ORIENTATION)



1/15 Robinson Street, Wollongong



Scale in metres. Indicative only. Dimensions are approximate. All information contained herein is gathered from sources we believe to be reliable. However, we cannot guarantee its accuracy and interested persons should rely on their own enquiries. Some images may contain digital furniture.