



## 11/401 West Dapto Road, HORSLEY, NSW 2530

### 119m2 WAREHOUSE - BRAND NEW!

Brand new 119m2 high security warehouses located in the new and exciting boutique warehouse/storage complex, aptly named Trade Complex!

Property features include:

- Warehouse internal space of 119m2
- Includes full bathroom with shower and mezzanine
- 3-meter electric roller door
- High clearance with full height tilt up concrete panel construction
- 24/7 CCTV and gated complex
- 1 designated car spot

Centrally located in the West Dapto Precinct amongst newly settled residential subdivisions and only minutes from major industrial areas with easy access to expressways. Wollongong City CBD, business and financial precinct only a 15-minute

The particulars contained herein are supplied for information only and shall not be taken as a representation in any respect on the part of the vendor or its agent. Interested parties should contact the nominated person or office for full and current details.

**TYPE:** For Lease

**INTERNET ID:** 36P3014

**RENTAL DETAILS**

**Rent / Lease:**

[Expressions Of Interest](#)

**CONTACT DETAILS**

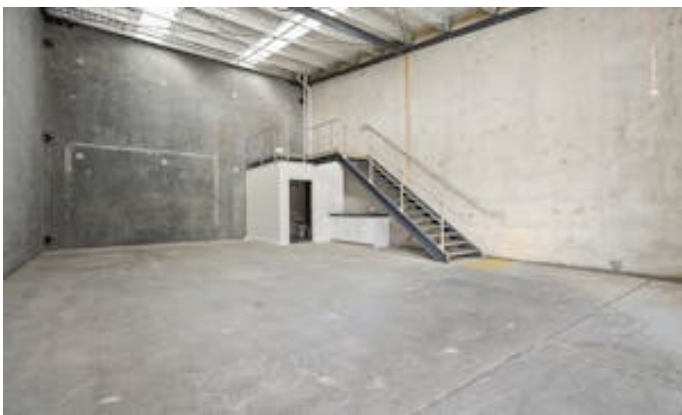
**Elders Real Estate  
Wollongong**

353 Crown Street  
WOLLONGONG, NSW  
02 4228 7878

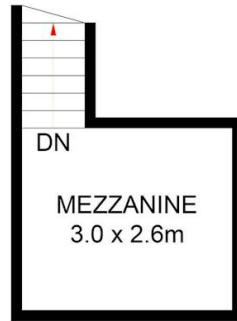
**Daniel Niceski**  
0408 422 876

drive.

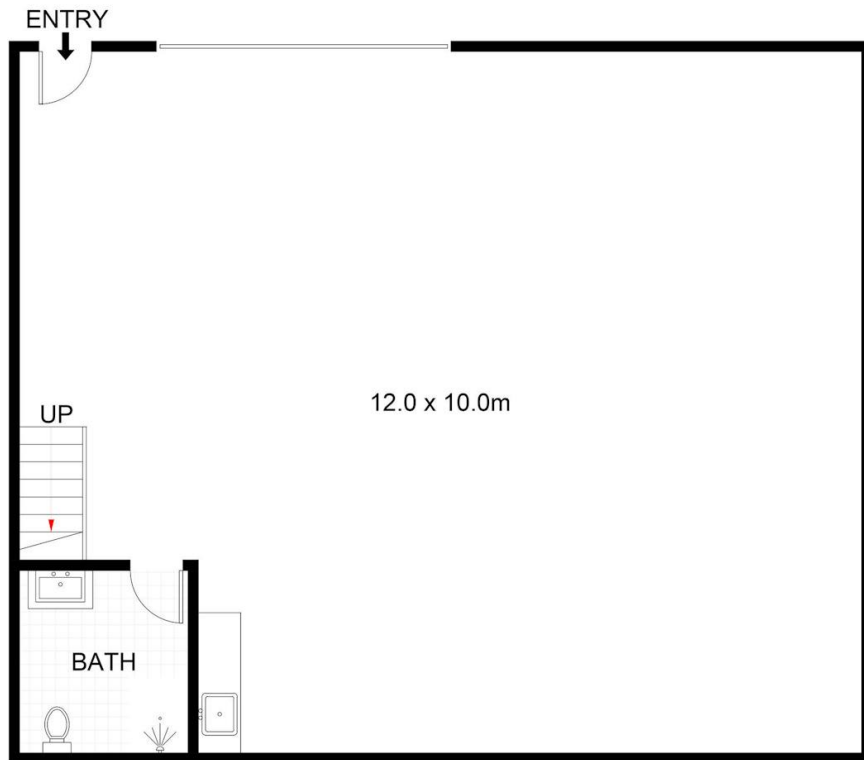
- Available on: 23/06/26
- Commercial Type:
- Building Area: 119.00 square metres







FIRST FLOOR



GROUND FLOOR



11/401 West Dapto Road, Dapto

Scale in metres. Indicative only. Dimensions are approximate. All information contained herein is gathered from sources we believe to be reliable. However, we cannot guarantee its accuracy and interested persons should rely on their own enquiries. Some images may contain digital furniture.