

123-125 Princes Highway, UNANDERRA, NSW 2526

High Exposure Ground Floor Commercial Office | Prime Princes Highway Position

Elders Real Estate Wollongong is proud to present this outstanding ground floor commercial office, ideally positioned on the highly exposed corner of Princes Highway and Central Road, Unanderra.

Offering approximately 220m² of quality office accommodation, this modern premises is ready for immediate occupation and is perfectly suited to professional services, medical, government, education, training or corporate headquarters.

Featuring a functional layout with a combination of private offices, open-plan workspace, boardroom facilities and staff amenities, this property provides flexibility for a wide range of businesses.

Property Features:

- Approx. 220m² ground floor office space
- Excellent exposure to the Princes Highway
- Reception and waiting area

The particulars contained herein are supplied for information only and shall not be taken as a representation in any respect on the part of the vendor or its agent. Interested parties should contact the nominated person or office for full and current details.

TYPE: For Lease

INTERNET ID: 36P3065

RENTAL DETAILS

Rent / Lease:

[Expressions Of Interest](#)

CONTACT DETAILS

**Elders Real Estate
Wollongong**

353 Crown Street
WOLLONGONG, NSW
02 4228 7878

Lou Niceski
0414 287 093

- Multiple private offices and interview rooms
- Large open-plan work area
- Spacious boardroom/conference room with wall-mounted presentation screen
- Server/electrical room
- Modern staff kitchen and lunchroom
- Male and female amenities
- Ducted air conditioning throughout
- Quality flooring and LED lighting
- 4 on-site parking spots
- Excellent signage opportunities
- Ready for immediate occupation

Situated in the heart of Unanderra's thriving commercial precinct, this property enjoys outstanding connectivity and convenience.

Only moments from:

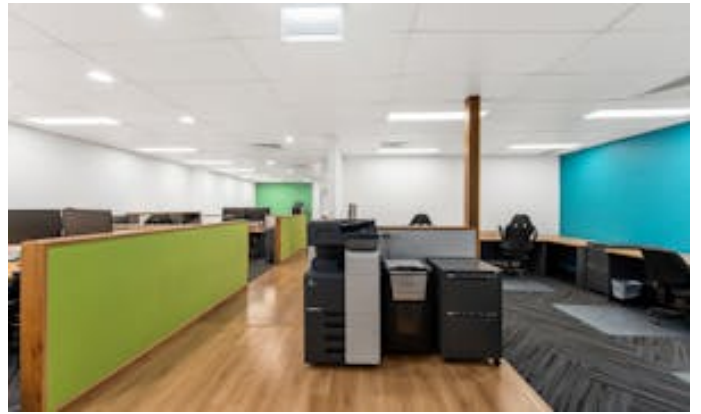
- Unanderra Train Station
- Princes Highway
- Port Kembla Industrial Precinct
- BlueScope Steel
- Wollongong CBD (approximately 10 minutes)
- M1 Motorway with direct access north to Sydney and south to Shellharbour

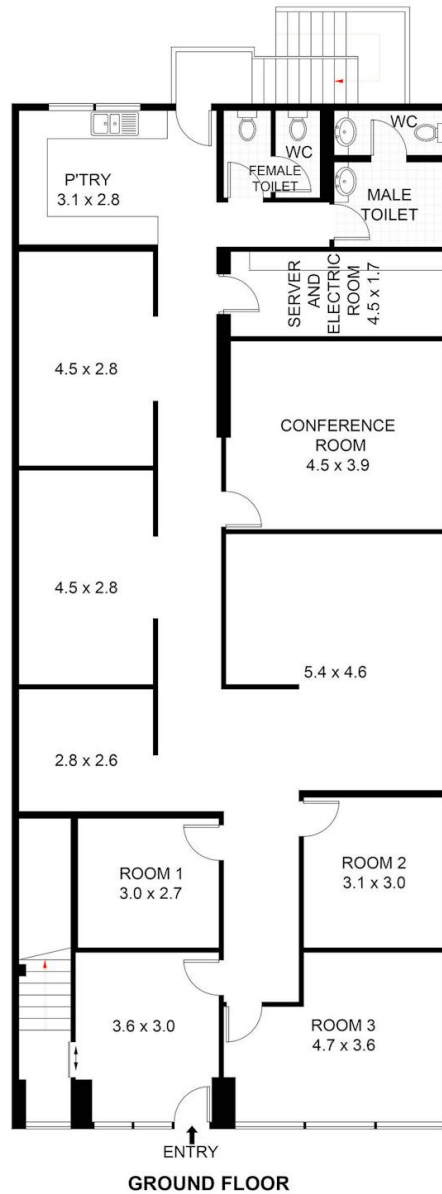
Surrounded by major retailers, professional services, caf  s and established commercial businesses, this location provides exceptional accessibility for both staff and clients.

This is a rare opportunity to secure a high-quality commercial office in one of the Illawarra's most strategic business locations.

Contact Elders Real Estate Wollongong today for further information or to arrange your private inspection.

- Commercial Type:
- Building Area: 220.00 square metres





123-125 Princes Highway, Unanderra



Scale in metres. Indicative only. Dimensions are approximate. All information contained herein is gathered from sources we believe to be reliable. However, we cannot guarantee its accuracy and interested persons should rely on their own enquiries. Some images may contain digital furniture.