



## 107 Plantain Road, SHAILER PARK, QLD 4128

### Unmatched Size, Unforgettable Home!

This expansive and beautifully designed home is perfect for large families seeking space, comfort and luxury. With 5 bedrooms + a full office, 2 bathrooms, a large outdoor patio area, and a sparkling pool, this property offers everything you need to create lasting memories with your loved ones!

As you step inside, you'll be greeted by a sense of warmth and elegance. The spacious living areas provide ample room for relaxation and entertainment, making it easy to host gatherings or simply unwind after a long day. The well-appointed kitchen is a chef's delight, featuring modern appliances and plenty of storage space.

The five bedrooms offer privacy and tranquility, ensuring everyone in the family has their own sanctuary. The bedrooms are equally spacious and feature built-in wardrobes, providing plenty of storage for all your belongings.

If you work from home or need a dedicated space for study, the included study room is the perfect solution. Whether it's for business matters or academic pursuits, this area offers peace and quiet for focused work at the entrance of the home.

**TYPE:** Sold

**INTERNET ID:** 37P0450

**SALE DETAILS**

**OFFERS OVER**  
**\$1,130,000**

**CONTACT DETAILS**

**Elders Real Estate Shailer Park**

4/54 Bryants Road  
Shailer Park, QLD  
(07) 3440 8500

**Luke Van Wijk**  
0438 015 656

One of the highlights of this home is the expansive outdoor area. The large patio is ideal for outdoor dining, barbecues, and entertaining friends and family. Imagine enjoying lazy afternoons by the pool, taking refreshing dips, or simply basking in the sun while the kids play in the water. It's a true oasis for relaxation and fun.

Located in the sought-after suburb of Shailer Park, this home offers convenience and a wonderful community. Enjoy the proximity to excellent schools, parks, shopping centers, and recreational facilities, ensuring you have everything you need within easy reach. Commuting to the city is a breeze with nearby public transportation options and easy access to major roads.

Don't miss this opportunity to make this magnificent family home your own!

Inside:

- Five bedrooms
- Dedicated office
- Two bathrooms
- Open planned living
- High ceilings
- Ducted air conditioning
- Vacuum cleaning system

Outside:

- Outdoor patio
- Pool
- 1062m2 Block

Services:

- Town water & sewerage
- NBN connected

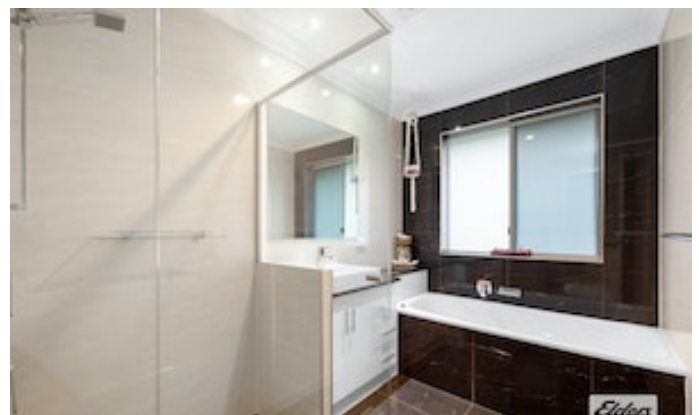
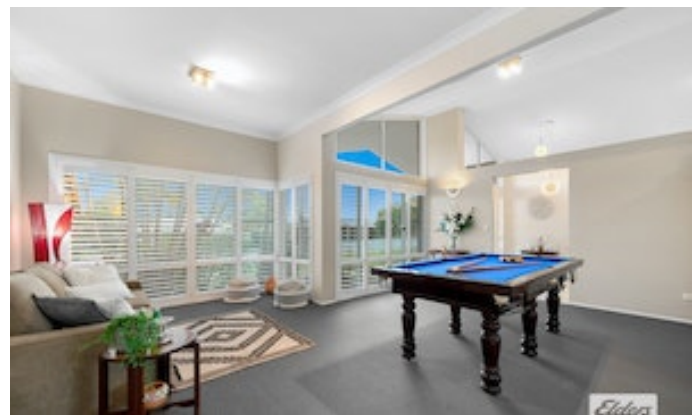
Location:

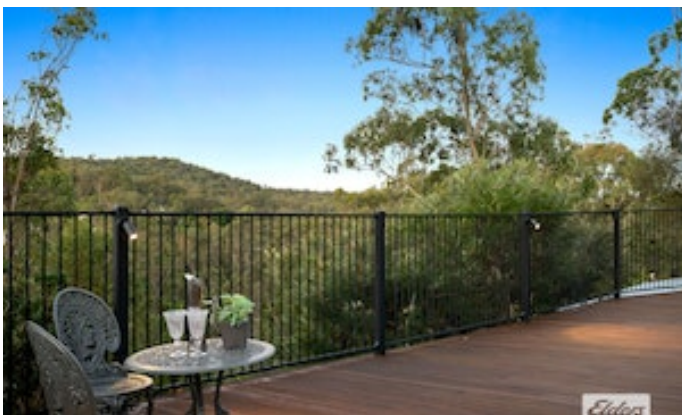
- Close to Kimberley Park State School
- Close to Kimberley Forest bike and walking tracks
- 5 minutes to John Paul College
- 3 minutes to the Logan Hyperdome (one of Qld's largest shopping destinations)
- 3 minutes to the Brisbane busway (a major public transport hub)
- 3 minutes to access to the M1
- 5 minutes to Chisholm College
- 15 minutes to Calvary Christian College
- 30 minutes to Brisbane

- 30 minutes to Ipswich
- 30 minutes to Gold coast

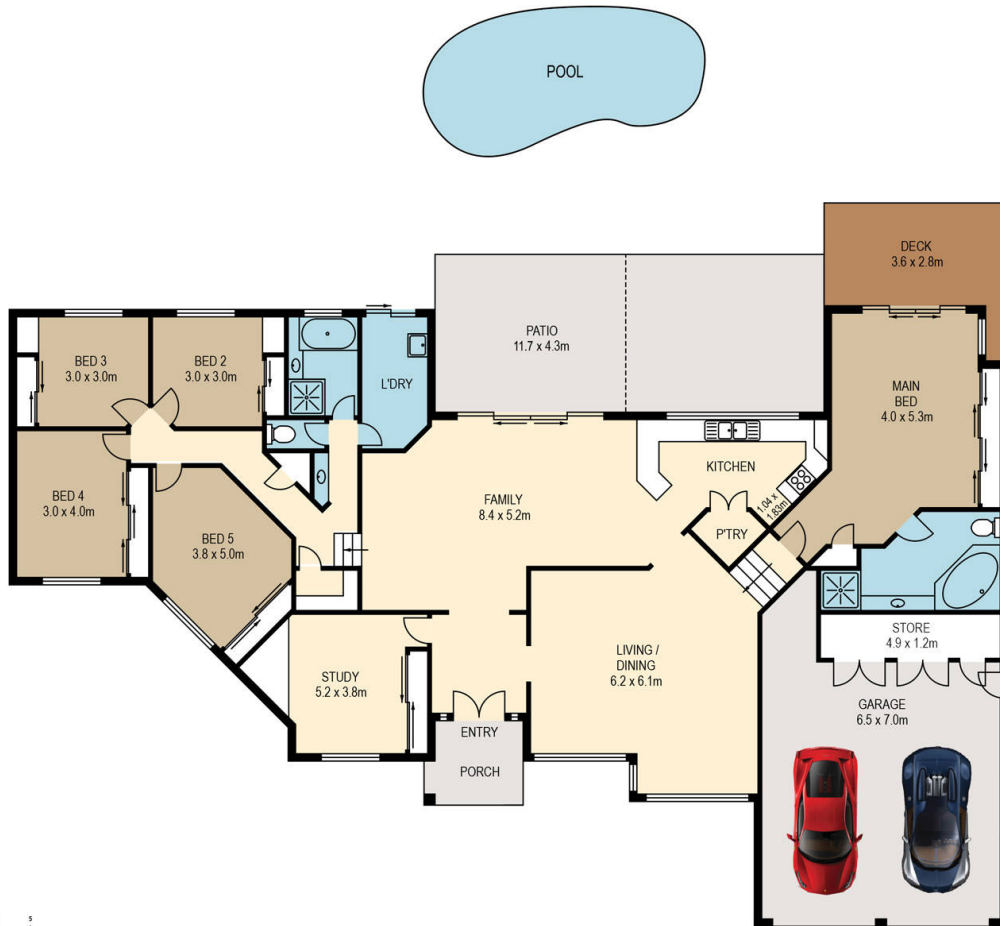
Other features: Close to Schools, Close to Shops, Close to Transport, Pool

- Land Area 1,062.00 square metre
- Bedrooms: 5
- Bathrooms: 2
- Car Parks: 2
- Ensuite









0 1 2 3 4 5 SCALE (METRES)

PLANS SHOWN ONLY INDICATIVE OF LAYOUT. DIMENSIONS ARE APPROXIMATE.

All information contained herein is gathered from sources we believe to be reliable. However we cannot guarantee its accuracy and interested persons should rely on their own enquiries.



107 PLANTAIN ROAD

Created by RealScope®  
www.realscope.com.au