



12 Clivia Crescent, DAISY HILL, QLD 4127

THERE'S MONEY TO BE MADE HERE!

12 Clivia Crescent offers a range of options, featuring three homes on one title. This setup would suit multi-generational families or alternatively live in one and use the rental income from the other two to pay off the mortgage!

WHAT WE LOVE ABOUT THIS PROPERTY:

Marketing agent Nathan Strudwick says "It's not often a cash cow like this presents itself in such a prime location like the heart of Daisy Hill. Investors would be foolish to miss this boat."

PROPERTY HALLMARKS:

• Three individual dwellings

• 6 bedrooms in total

• 5 bathrooms in total

• 6 car accommodation

TYPE: Sold

INTERNET ID: 37P4333

SALE DETAILS

**NOW Offers Over
\$950,000**

CONTACT DETAILS

**Elders Real Estate Shailer
Park**

4/54 Bryants Road
Shailer Park, QLD
(07) 3440 8500

Nathan Strudwick
0432 165 631

• Split system air-conditioning

• In-ground saltwater pool

• Fully fenced with electric gate

SERVICES:

• Town water & sewerage

• Three rainwater tanks to gardens

• Approximately 5KW solar

• NBN ready

LOCATION:

• 1634m² block

• Located in prestigious Daisy Hill catchment

• Peaceful street position

• Walk to the bus stop

• Walk to mountain bike and walking trails

• Walk to Daisy Hill State School

• Walk to shops

• 5 minutes to John Paul College

• 5 minutes to Hyperdome, public transport

• 15 minutes to Chisholm College

• 5 minutes to the M1

• 30 minutes to CBD,

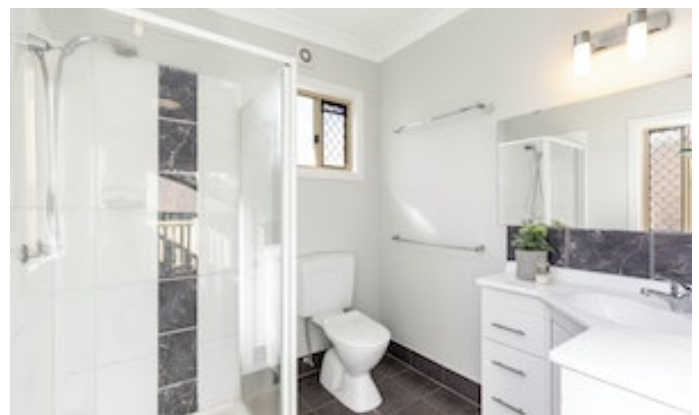
• 30 minutes to Brisbane airport

• 40 minutes to the Gold Coast

Disclaimer: We have in preparing this information used our best endeavours to ensure that the information contained herein is true and accurate, but accept no responsibility and disclaim all liability in respect of any errors, omissions, inaccuracies or misstatements that may occur. Prospective purchasers should make their own enquiries to verify the information contained herein.

Other features: Close to Schools, Close to Shops, Close to Transport, Pool

- Land Area 1,634.00 square metre
- Bedrooms: 6
- Bathrooms: 5
- 6 car carport









0 1 2 3 4 5 SCALE (METRES)

PLANS SHOWN ONLY INDICATIVE OF LAYOUT. DIMENSIONS ARE APPROXIMATE.
All information contained herein is gathered from sources we believe to be reliable.
However we cannot guarantee its accuracy and interested persons should rely on their own enquiries.



12 CLIVIA CRESCENT

Created by RealScope®
www.realscope.com.au

The particulars contained herein are supplied for information only and shall not be taken as a representation in any respect on the part of the vendor or its agent. Interested parties should contact the nominated person or office for full and current details.