



56 Trudy Crescent, CORNUBIA, QLD 4130

Live in the heart of Nature with this Sprawling Family home on a Large 2,737m² Block!

'OPEN HOME ON SATURDAY CANCELLED'

Welcome to 56 Trudy Crescent, a remarkable residence that invites you to immerse yourself in the heart of nature while indulging in the splendour of a sprawling family home. Nestled upon a generous 2,737m² parcel of land, this property offers an exquisite canvas for focused family living, with the added allure of personalization to make it truly your own.

An abundance of living spaces throughout the residence set the stage for serene and relaxed family life. Whether you're hosting family gatherings or seeking a peaceful night in, this home effortlessly accommodates your needs.

As the warm summer months approach, the inground pool becomes a cherished amenity, ensuring that you can embrace the joys of outdoor living. Soccer enthusiasts will find ample space for practice, while pet lovers will appreciate the expansive yard to comfortably accommodate their animals.

One of the many highlights of this location is its proximity to local schools, making school runs an effortless endeavour. Say goodbye to being stuck in traffic and embrace

The particulars contained herein are supplied for information only and shall not be taken as a representation in any respect on the part of the vendor or its agent. Interested parties should contact the nominated person or office for full and current details.

TYPE: Sold

INTERNET ID: 37P4837

SALE DETAILS

[Contact Agent](#)

CONTACT DETAILS

Elders Real Estate Shailer Park

4/54 Bryants Road
Shailer Park, QLD
(07) 3440 8500

John Jessop
0407 033 274

the gift of more leisure time for relaxation and enjoyment.

Here are some of the exceptional features that await you:

- 5 spacious bedrooms, plus a dedicated study. The 5 bedrooms have a good layout, and the size will provide ample opportunity to transform them into cozy sanctuaries for you and your family
- Exposed rafters incorporated into select living areas contribute to an open-plan ambiance
- This property features three well-designed bathrooms, one being an ensuite to the master bedroom, providing ultimate privacy and convenience.
- Multiple living areas are thoughtfully integrated into the design of the home
- The kitchen, the heart of the home, is strategically positioned to provide easy access to both the living spaces and the outdoor entertaining area. It boasts ample countertop space and features a 90cm oven with gas hotplates.
- The master suite offers a sanctuary for relaxation after a long day, complete with a walk-in robe and ensuite.

Additional Features:

- Back-to-base alarm system with a separate setting for the shed
- 13m x 7m shed featuring triple doors
- A double garage complemented by additional carports accommodating up to four vehicles. An adjoining storage area and laundry further enhance functionality

56 Trudy Crescent is not just a house; it's an opportunity to create cherished family memories in a setting that seamlessly blends comfort, space, and nature. Welcome to your new home.

Location and Infrastructure of Trudy Crescent:

- Enjoy the proximity to Cornubia State Forest, which offers 10 km of walking tracks for nature enthusiasts.
- Just minutes away, you'll find the Logan Hyperdome and the Logan busway, providing convenient access to the city.
- A short drive will take you to Calvary Christian College, Carbrook State School, Shailer Park State School and St Matthews, ensuring quality education options for families.
- Within a 15-minute drive, you can reach John Paul College, renowned for its educational excellence.
- Take a 10-minute journey to the esteemed Sirromet Winery, where you can indulge in wine tasting and beautiful surroundings.
- The property offers a convenient location, being 30 minutes away from both Brisbane and the Gold Coast, providing easy access to the best of both worlds.

Contact Agent

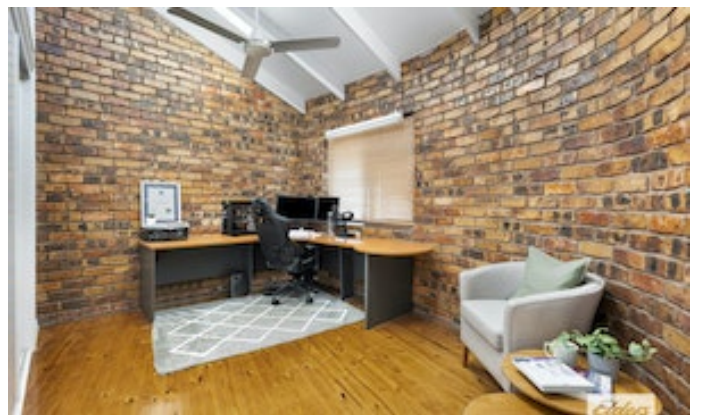
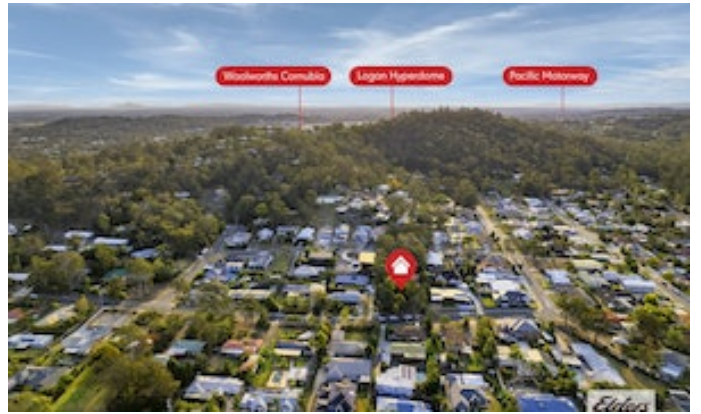
This Property is being sold without a price and therefore a guide cannot be provided. The website may have filtered the property into a price bracket for website functionality purposes only.

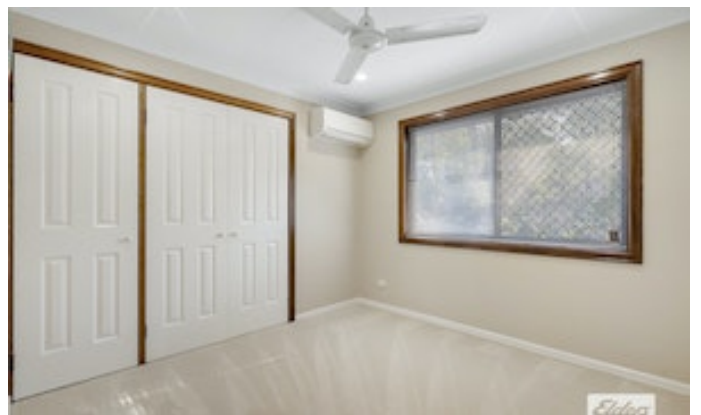
Disclaimer: We have in preparing this information used our best endeavours to ensure that the information contained herein is true and accurate, but accept no responsibility and disclaim all liability in respect of any errors, omissions, inaccuracies or misstatements that may occur. Prospective purchasers should make their own enquiries to verify the information contained herein.

Other features: Carpeted, Close to Schools, Close to Shops, Close to Transport

- Land Area 2,737.00 square metres
- Bedrooms: 5
- Bathrooms: 3
- 5 car garage
- 4 car carport









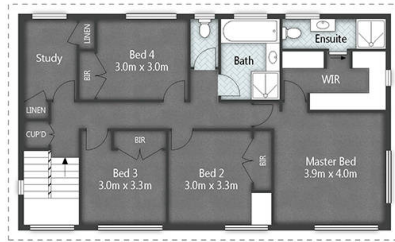
56 Trudy Crescent CORNUBIA

John Jessop | 0407 033 274
john.jessop@eldersrealstate.com.au

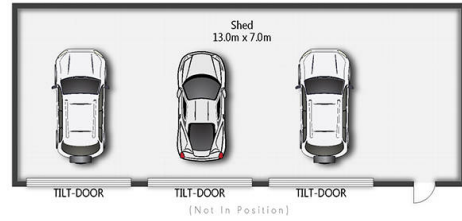


5 | 3 | 9 | 403m²

Internal: 240m²
External: 103m²
Total: 403m²
Garage: 60m²



FIRST FLOOR



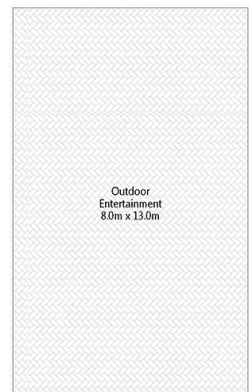
[Not In Position]



GROUND FLOOR



[Not In Position]



[Not In Position]

Plans are shown for marketing purposes only. All dimensions are approximate; they are subject to errors and inaccuracies and no liability will be accepted.

