

6 Deloraine Drive, SPRINGWOOD, QLD 4127

A UNIQUE DESIGN WITH A FOREST OUTLOOK

Mountain Bikers, Hikers and nature lovers - this is a beautiful position to fall in love with. 6 Deloraine drive is set in an enviable position adjacent to Springwood Environmental Park, Daisy Hill State Forest and it is only a short walk to John Paul College, Chatswood Hills State School, local shops and City Buses.

The light, bright interiors of this unique design give you a feeling of home, and there is plenty of space for you and your loved ones to enjoy. At the front, a spacious open plan lounge and dining area is the ideal place for dinner parties and movie nights on a comfy couch. The large kitchen has stunning composite stone benchtops, fantastic storage and stainless steel appliances. Just around the corner, the family room with raked ceilings opens out onto the massive covered alfresco entertaining area and the lush, fully fenced backyard. Also on this level is a laundry/powder room, additional storage and an oversized automatic double garage - this ideal place to expand the home with an extra bedroom, bathroom and third living area.

Upstairs, a king-sized main bedroom captures cooling breezes and sunlight with large picture windows to enjoy the outlook. Two additional bedrooms, both with built-in robes also enjoy lush views of the adjacent bushland. The modern main bathroom and second toilet are also on this level.

The home has secure side access for trailers, caravans and a boat, plus multiple off street parking spaces in addition to the oversized double garage.

The particulars contained herein are supplied for information only and shall not be taken as a representation in any respect on the part of the vendor or its agent. Interested parties should contact the nominated person or office for full and current details.

TYPE: Sold

INTERNET ID: 37P5029

SALE DETAILS

CONTACT AGENT

CONTACT DETAILS

Elders Real Estate Shailer Park

4/54 Bryants Road
Shailer Park, QLD
(07) 3440 8500

Joel Ruge
0421 738 353

This beautiful home is move-in ready but has the added bonus of room to grow on the 701m2 allotment.

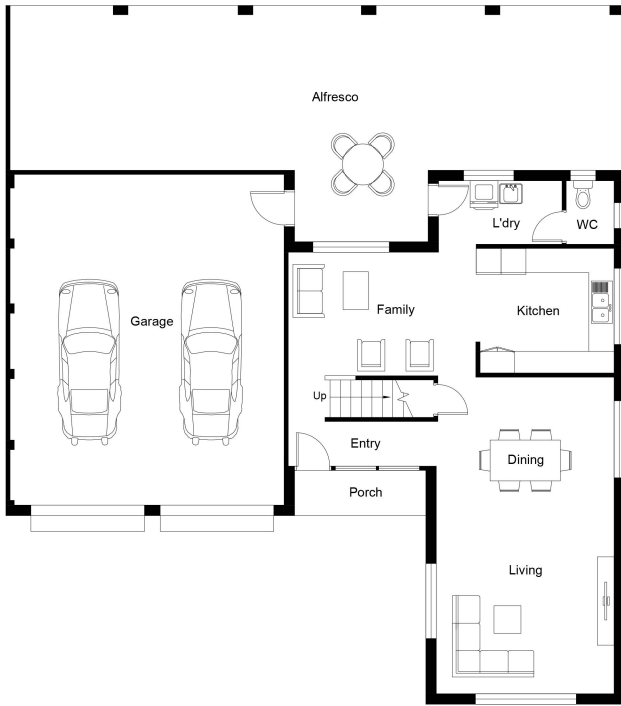
Call now to visit!

Other features: Close to Schools, Close to Shops, Close to Transport, Pay TV Access

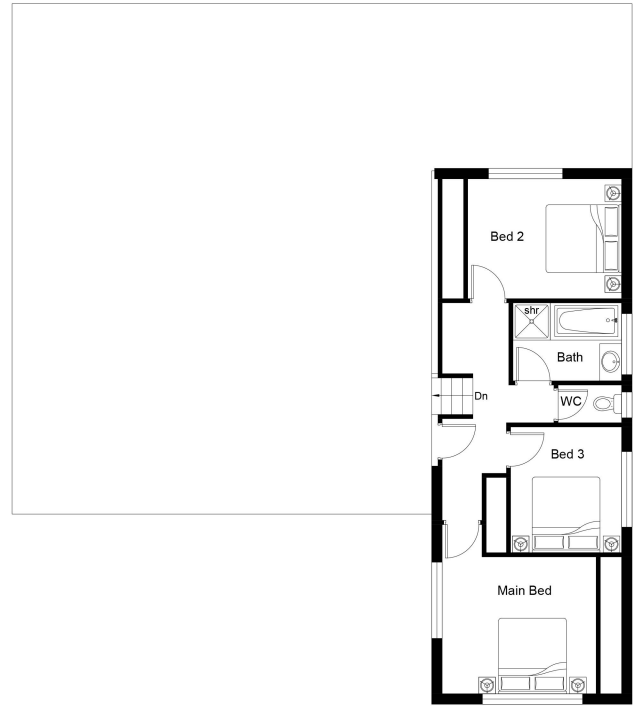
- Land Area 701.00 square metres
- Bedrooms: 3
- Bathrooms: 1
- Double garage







GROUND FLOOR PLAN



FIRST FLOOR PLAN

6 Deloraine Drive Springwood