



41-45 Daintree Road, CORNUBIA, QLD 4130

Executive Acreage in Cornubia's Dress Circle

Enjoy the art of modern entertaining, tucked away on a pristine 1.25-acre block in one of Cornubia's most prestigious and tightly held streets. A home that redefines space, style and function, offering a residence of 1,331m² under-roof, designed to take in every aspect of what is expected in an executive residence.

A true balance of acreage life with the convenience of suburban living, this property offers unparalleled comfort and sophisticated indoor-outdoor living.

Step inside and discover a home designed for both elegant entertaining and relaxed family living. Showcasing seven generous bedrooms, three and a half modern bathrooms and multiple separate living spaces for the whole family to enjoy. Relax and retreat to your master suite, with a spacious walk-in robe and luxury ensuite featuring a free-standing bath to unwind.

Even the most discerning tastes will enjoy cooking in this kitchen which is found at the heart of the home. Complete with stone waterfall benchtops, premium Miele appliances, dual walk-in pantries, and thoughtful storage solutions. This kitchen offers an ideal space for preparing family meals to catering for large gatherings.

TYPE: For Sale

INTERNET ID: 37P5937

SALE DETAILS

Executive Residence

CONTACT DETAILS

Elders Real Estate Shailer Park

4/54 Bryants Road
Shailer Park, QLD
(07) 3440 8500

Nathan Strudwick
0455 588 777

You'll find three distinct living areas that offer flexibility and function for the modern household. Whether it's formal entertaining, relaxed everyday living, or a quiet space to unwind, this home has been thoughtfully designed with comfort, connection, and versatility in mind.

Indulge in peace and tranquillity, enhanced by the addition of a spacious, in-home sauna for a true sense of luxury and relaxation.

The outdoor area stands as a defining element of the home, thoughtfully designed to enhance both aesthetic appeal and functional living. Expansive and meticulously landscaped, it creates a natural extension of the indoor spaces, inviting relaxation and social gatherings alike. The entertainment area boasts a heated saltwater pool, separate aromatherapy spa and a fully equipped outdoor kitchen. You will be sure to enjoy entertaining family and friends.

Nestled in the garden is a dedicated fire pit that provides a cozy ambiance and dedicated space for evening gatherings and unwinding beneath the stars.

Beyond these features of this home, the property also includes a three-bay shed, separate home office, workshop and covered parking spaces for up to 16 vehicles â## ideal for caravans, boats and motor enthusiasts.

Property Highlights

- 7 large bedrooms, including a private master suite with walk-in robe and ensuite
- Multiple living zones: formal, casual, and family spaces for all occasions
- Designer kitchen with stone waterfall benches, Miele appliances, dual walk-in pantries
- Sauna, timber floors, ducted and split system air-conditioning
- Seamless indoor-outdoor flow to two covered alfresco areas
- Heated saltwater pool, aromatherapy spa, outdoor kitchen, and fire pit
- Separate home office â## ideal for remote work or business use

Exceptional Infrastructure

- 3-bay powered shed with drive-through access
- Double lock-up garage with internal entry
- High-clearance, covered parking for up to 16 vehicles â## perfect for tradies, collectors or business owners.
- Dual street access with electric gates and multiple security/intercom systems

Eco & Future Ready

- 13KW solar system (battery-ready)
- 2 x 10,000L rainwater tanks
- Town water + Biocycle wastewater system

Prime Location

The particulars contained herein are supplied for information only and shall not be taken as a representation in any respect on the part of the vendor or its agent. Interested parties should contact the nominated person or office for full and current details.

Enjoy rural-style serenity with unbeatable convenience:

- 5 mins to Logan Hyperdome, Chisholm College & Calvary Christian College
- 10 mins to Sirromet Winery & local bushwalking trails
- 15 mins to John Paul College & the Brisbane Busway
- 30 mins to Brisbane CBD, Airport & the Gold Coast

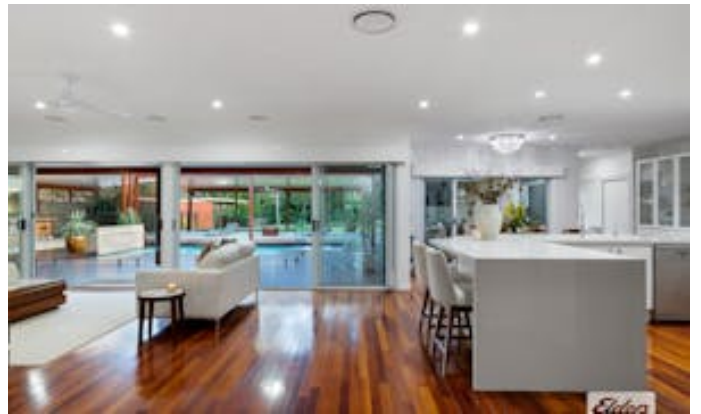
This is more than a home-it's a lifestyle. With space, privacy, and every detail considered, this is Cornubia acreage living at its absolute finest.

Inspections by appointment only. Contact Nathan Strudwick today to secure your private viewing.

Disclaimer: We have in preparing this information used our best endeavours to ensure that the information contained herein is true and accurate, but accept no responsibility and disclaim all liability in respect of any errors, omissions, inaccuracies or misstatements that may occur. Prospective purchasers should make their own enquiries to verify the information contained herein.

Other features: Bush Retreat, Close to Schools, Close to Shops, Close to Transport, Pool, Prestige Homes

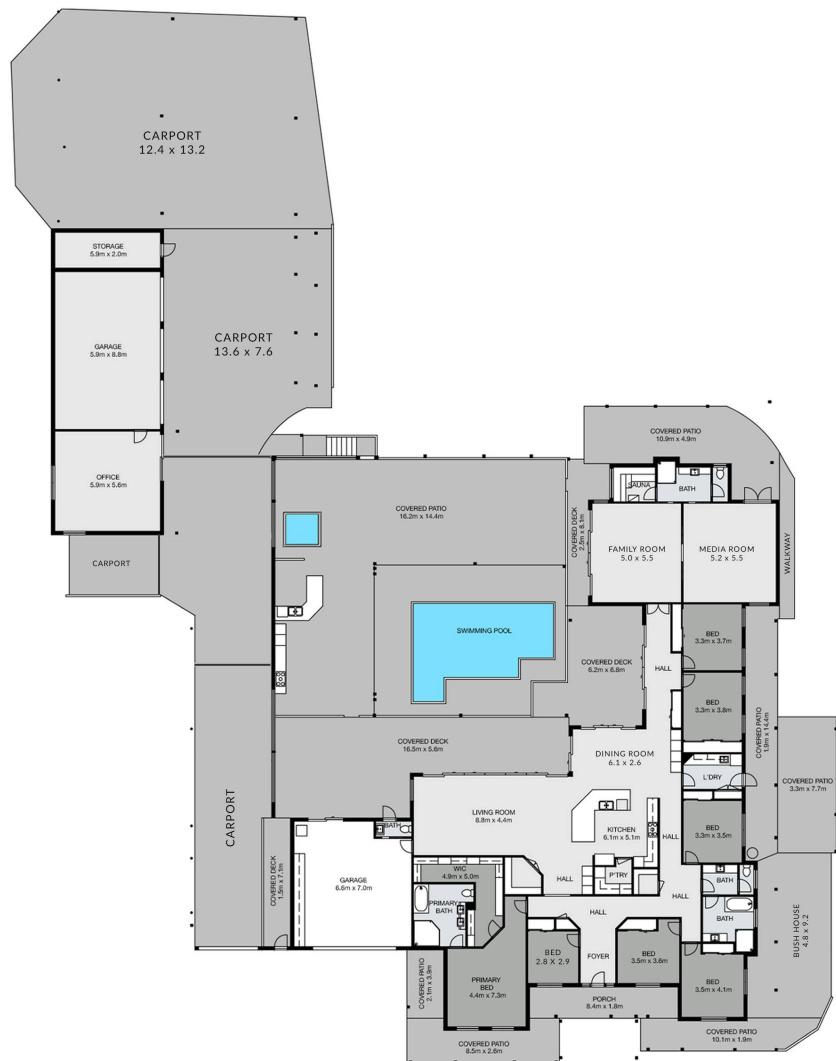
- Land Area 5,001.00 square metres
- Bedrooms: 7
- Bathrooms: 3
- Car Parks: 16











Elders Real Estate

41-45 DAINTREE ROAD, CORNUBIA

Bed 7 Bath 3 Car 16

Nathan Strudwick 0432 165 631

Measurements are approximate only and no responsibility is taken for any error, omission, or mis-statement. This is for illustrative purposes only and should be used as such by any prospective purchaser.