



1 Melaleuca Way, BAHRS SCRUB, QLD 4207

ULTIMATE DUAL OCCUPANCY IN BAHRS SCRUB!

1 Melaleuca Way is a sprawling lowset home offering not one but two residences. With internal access to the second residence, this property is the ultimate choice for your dual living requirements.

Featuring a total of five spacious bedrooms, three modern bathrooms and open plan kitchen/dining and living areas. Neutral tones, sleek tiled living spaces and the comforts of air-conditioning throughout the property tick the boxes for savvy buyers.

Marketing Agent Nathan Strudwick said "Never has there been a better presented dual living opportunity available in Bahrs Scrub! Modern, big and in a great location. This one has to be seen on Saturday."

Main residence:

- Three bedrooms with built-in robes
- Master with ensuite and walk-in robe
- Modern main bathroom with tub & separate toilet

The particulars contained herein are supplied for information only and shall not be taken as a representation in any respect on the part of the vendor or its agent. Interested parties should contact the nominated person or office for full and current details.

TYPE: For Sale

INTERNET ID: 37P5943

SALE DETAILS

Dual living

CONTACT DETAILS

Elders Real Estate Shailer Park

4/54 Bryants Road
Shailer Park, QLD
(07) 3440 8500

Nathan Strudwick
0455 588 777

- Stylish kitchen with gas cooktop & stone bench tops
- Open plan living/dining
- Split system air-conditioning throughout
- Ceiling fans
- Plantation shutters
- Laundry
- Security screens throughout

Second residence:

- Two bedrooms
- Central modern bathroom
- Stylish kitchen with gas cooktop & island bench with breakfast bar
- Open plan living/dining
- Walk in linen cupboard
- Laundry facilities in garage
- Security screens throughout

Outside:

- 492m2 block
- Open alfresco area
- Double lock up garage with internal access

SERVICES:

- Town water & sewerage
- Natural gas
- Gas hot water
- NBN connected
- 5.5KW approx. solar inverter

LOCATION:

- Close to Canterbury College
- Close to Holmview Central Woolworths Shopping Centre
- Close to Aldi and Bunnings Waterford
- Close to Trinity Catholic College Beenleigh
- Minutes to Waterford West State School

- Minutes to Beenleigh Train Station
- 15 minutes to Griffith University Logan Campus
- 40 minutes to Brisbane CBD
- 30 minutes to the Gold Coast

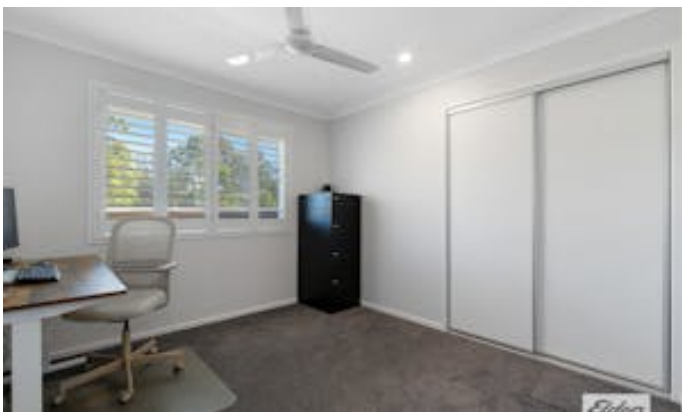
Disclaimer: We have in preparing this information used our best endeavours to ensure that the information contained herein is true and accurate, but accept no responsibility and disclaim all liability in respect of any errors, omissions, inaccuracies or misstatements that may occur. Prospective purchasers should make their own enquiries to verify the information contained herein.

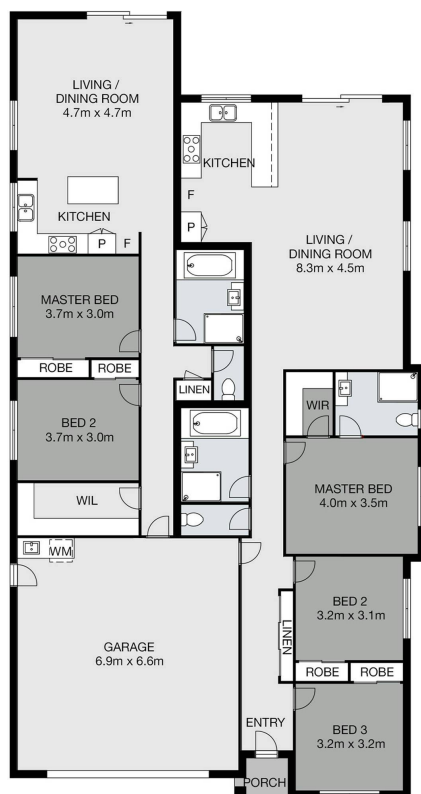
Other features: Close to Schools, Close to Shops, Close to Transport

- Land Area 492.00 square metres
- Bedrooms: 5
- Bathrooms: 3
- Double garage
- Ensuite

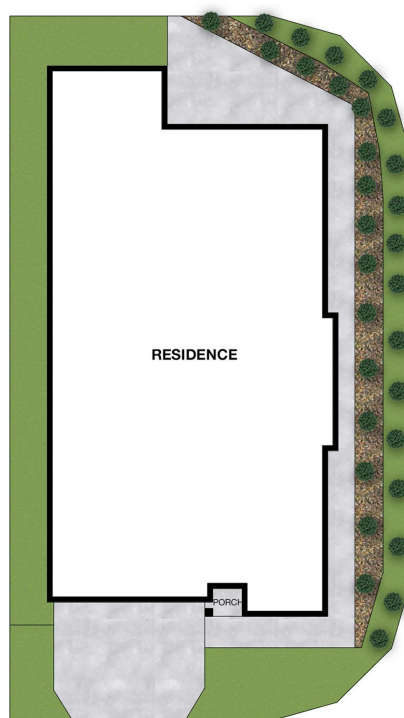








FLOOR PLAN



SITE PLAN

Elders Real Estate

1 MELALEUCA STREET, BAHR'S SCRUB

Bed 5 Bath 3 Car 2

Nathan Strudwick 0432 165 631

Measurements are approximate only and no responsibility is taken for any error, omission, or mis-statement. This is for illustrative purposes only and should be used as such by any prospective purchaser.