



29 Adelong Road, SHAILER PARK, QLD 4128

Private Parkside Living in Shailer Park

Tucked away in a peaceful pocket of Shailer Park this spacious four bedroom home borders Adelong Park, offering green outlooks and only one direct neighbour.

Features include brand new carpet, timber raked ceilings and multiple living areas. The large fenced yard and alfresco area are perfect for families or entertaining.

Inside:

- Four bedrooms
- Central bathroom with tub & separate toilet
- Timber kitchen with island bench & induction cooktop
- Multiple living areas
- Split system air-conditioning
- Ceiling fans throughout

TYPE: For Rent

INTERNET ID: 37P5949

RENTAL DETAILS

Rent / Lease:

\$750 pw

CONTACT DETAILS

Elders Real Estate Shailer Park

4/54 Bryants Road
Shailer Park, QLD
(07) 3440 8500

Monique Robinson

- New carpet throughout

Outside:

- Open alfresco area
- Side access
- Established gardens
- Garden shed
- Fully fenced back yard

LOCATION:

- Close to Logan Hyperdome
- Close to Brisbane busway
- 5 minutes to Saint Mathews Catholic Primary
- 10 mins to John Paul College
- 10 minutes to Chisholm College
- 20 mins to Sirromet Winery
- 30 mins to Brisbane Airport
- 30 mins to Brisbane CBD
- 40 mins to Gold Coast

*** To book an inspection time, please register online. Once you have registered, we can notify you of any upcoming inspections, time changes or cancellations. ***

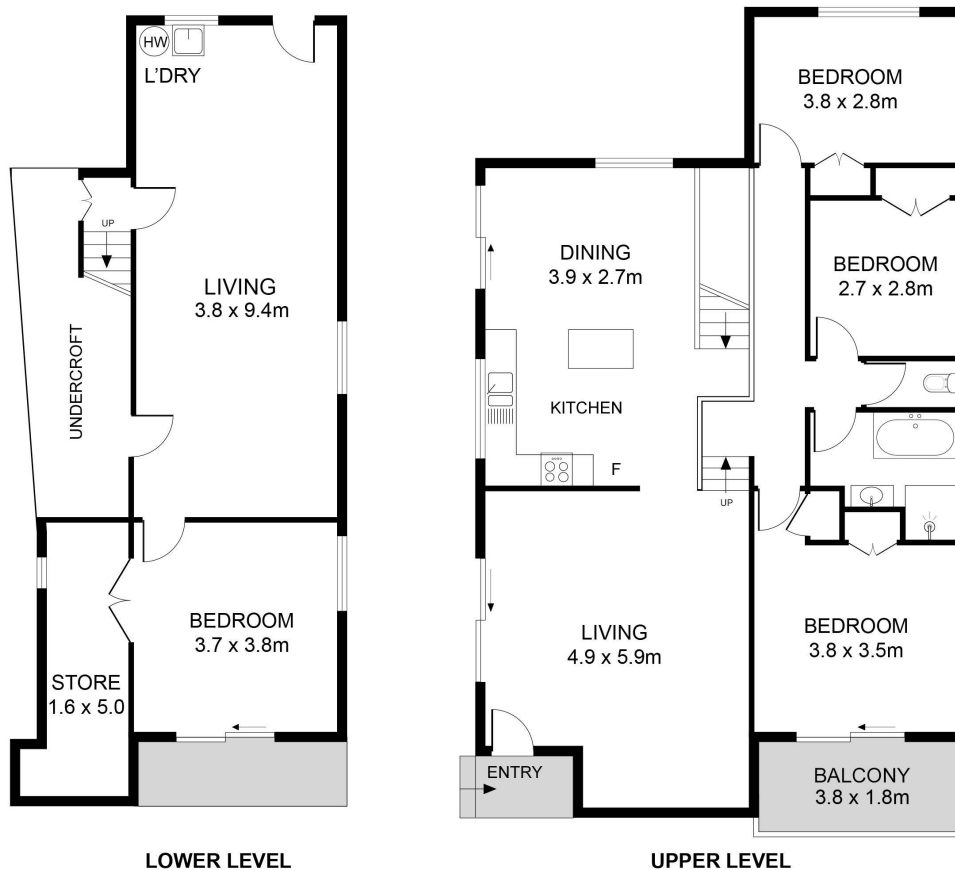
Other features: Close to Schools, Close to Shops, Close to Transport

- This property is: Unfurnished
- Pets: No
- Available Now
- Land Area 1,012.00 square metre
- Bedrooms: 4
- Bathrooms: 1
- Single garage









29 ADELONG ROAD, SHAILER PARK



Every attempt has been made to ensure the accuracy of this floorplan, however, plans are for marketing purposes only. All dimensions are approximate and not to scale, they are subject to errors and inaccuracies.