



477 Springwood Road, DAISY HILL, QLD 4127

LIVING - ON ANOTHER LEVEL

Imposing and luxurious, this executive home marries the setting with surprising lightness and flow. As you enter the house through a wide architectural doorway and reach the top of the timber staircase, it allows you to admire the epic views then sweeps you into the living room, dining room and hostess kitchen. Every space enjoys spectacular Mount Tamborine to Gold Coast panoramas.

The sleeping quarters enjoy definitive separation. A master suite boasting double headed shower ensuite and a massive walk-in robe takes in the views with floor to ceiling windows. At the opposite end, a two-bedroom retreat with its own bathroom makes for the perfect teenage space.

The lower level of the floor plan, locate a recreation room, additional en-suite bedroom and an expansive, purpose-built home office with kitchenette. These activity zones have internal and separate access. No need to disturb family members!

A second residence to the forefront of the property, encourages the ever-popular multigenerational living aspect. Featuring a generous open plan living/dining/kitchen and solo bedroom with walk-in robe, all comfortably air-conditioned.

TYPE: For Sale

INTERNET ID: 37P5987

SALE DETAILS

For Sale

CONTACT DETAILS

Elders Real Estate Shailer Park

4/54 Bryants Road
Shailer Park, QLD
(07) 3440 8500

Nathan Strudwick
0455 588 777

The pool and outdoor entertaining areas are exceptionally designed to capture the best vantage points of this stunning property. With an abundance of space for vehicle storage and low maintenance, landscaped grounds, this home will suit the biggest of families and busiest of executives.

The property, which is being marketed by Elders Shailer Park Partner, Nathan Strudwick, exudes unrivalled luxury. "I am excited to have been given the opportunity to sell a home that sets the benchmark in prestige lifestyle living." Inspection by private appointment only.

Main House:

- Four generous bedrooms
- Master wing with ensuite & massive WIR
- Separate 'teenager' wing
- Three modern bathrooms (including two ensuites) plus powder room
- Hostess kitchen with stone benchtops, 900mm induction cooktop & tree top views
- Soft close cabinetry and walk-in pantry with wine fridge
- Multiple living areas, upstairs and downstairs
- Study/tech space
- Floor to ceiling windows and sliders to capture the views
- Fireplace
- Timber floorboards upstairs
- Ducted air-conditioning
- Ceiling fans throughout
- Entertaining decks with built-in BBQ and endless views
- Laundry & storage room
- Double lockup garage with internal access
- Home office/additional living/teenage retreat with kitchenette

Second Residence:

- One bedroom with WIR
- Modern bathroom
- Open plan living dining
- Fully equipped modern kitchen
- Private deck
- Split system air conditioning
- Covered carport at entrance

The Grounds:

- 1,280m² fully fenced parcel of land with electric gates
- Saltwater inground swimming pool
- Additional extra high double carport for boat/caravan/trailers etc
- Ample off-street parking
- Low maintenance, landscaped gardens and lawns

Services:

- Town water & sewerage
- NBN connected

LOCATION AND INFRASTRUCTURE:

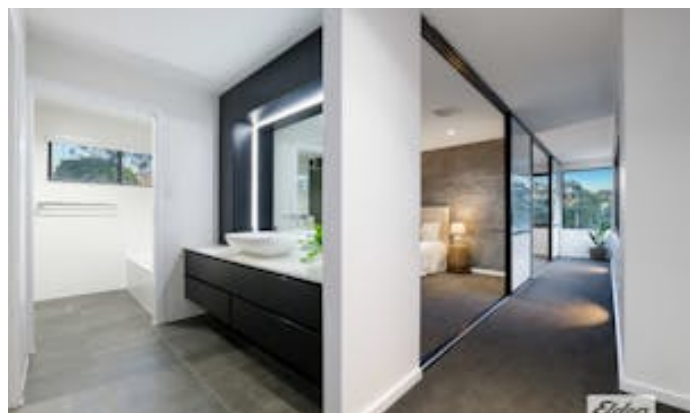
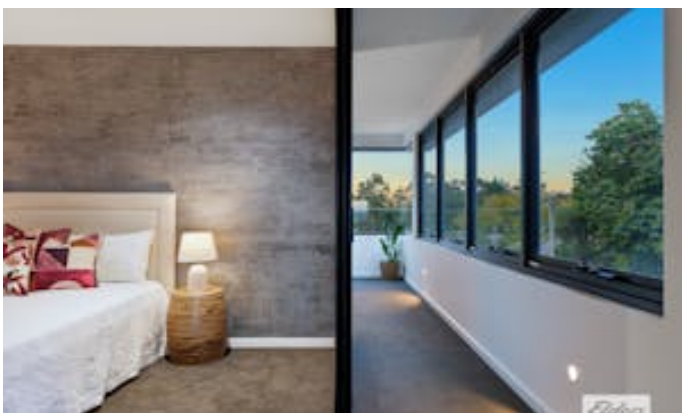
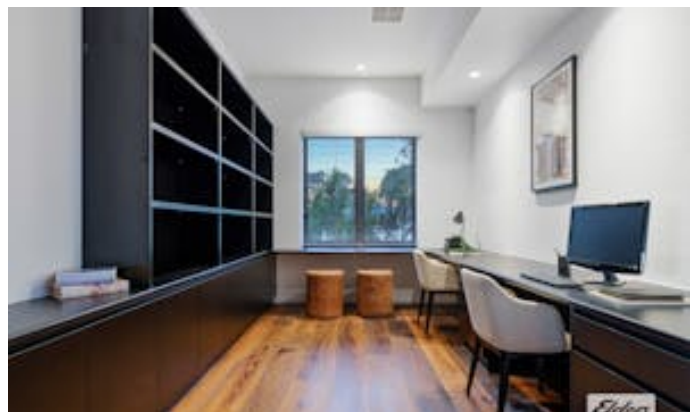
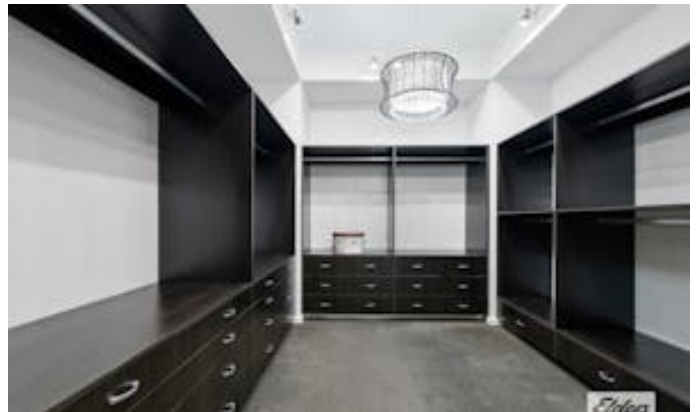
- Walking distance of John Paul College
- Walking distance the Daisy Hill Forest and Koala Sanctuary
- 3 minutes from the M1
- 5 minutes to the Logan Hyperdome and Brisbane busway
- 25 minutes to Brisbane CBD
- 30 minutes to the Gold Coast

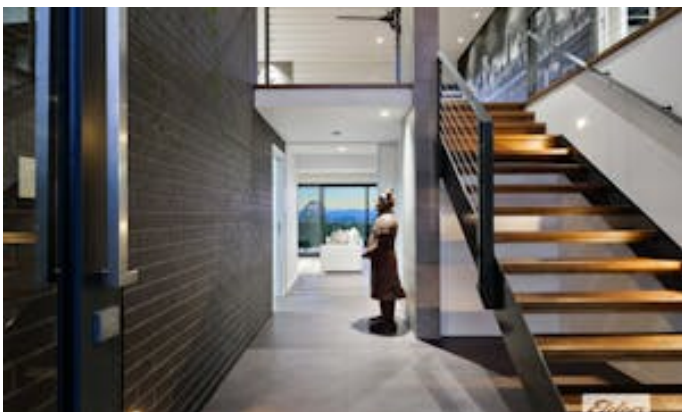
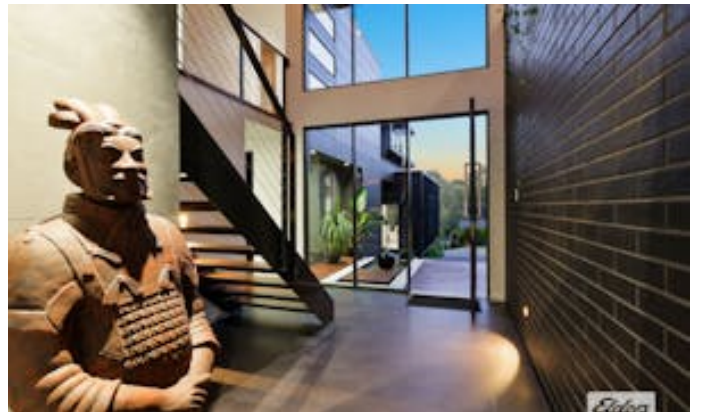
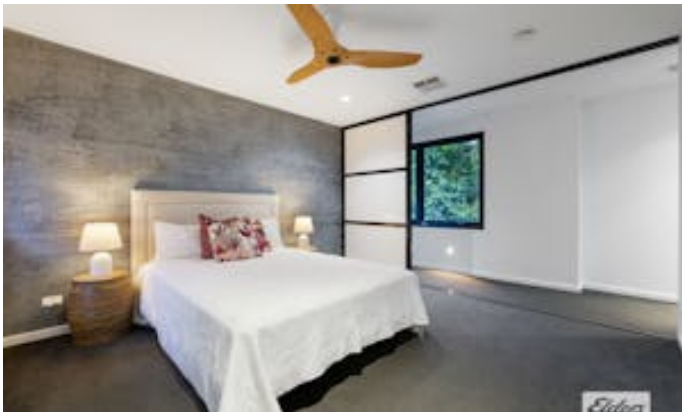
Disclaimer: We have in preparing this information used our best endeavours to ensure that the information contained herein is true and accurate, but accept no responsibility and disclaim all liability in respect of any errors, omissions, inaccuracies or misstatements that may occur. Prospective purchasers should make their own enquiries to verify the information contained herein.

Other features: Area Views, Close to Schools, Close to Shops, Close to Transport, Prestige Homes

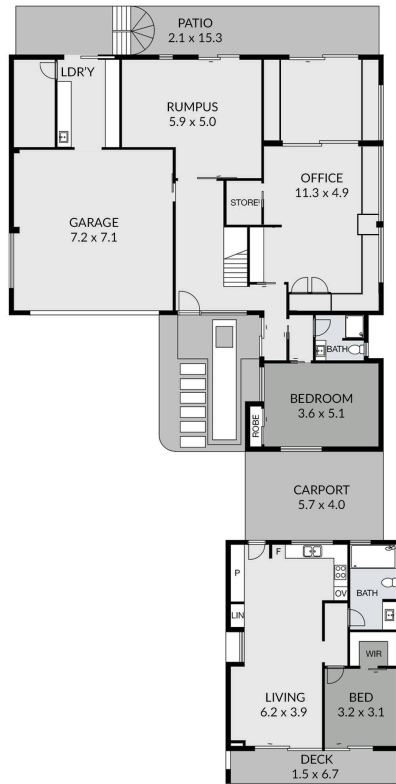
- Land Area 1,280.00 square metre
- Bedrooms: 5
- Bathrooms: 4
- 5 car garage











GROUND FLOOR



FIRST FLOOR



SITE PLAN



477 SPRINGWOOD ROAD, DAISY HILL

Bed 5 Bath 4 Car 5



Nathan Strudwick 0432 165 631

Measurements are approximate only and no responsibility is taken for any error, omission, or mis-statement. This is for illustrative purposes only and should be used as such by any prospective purchaser.