

14 Marana Street, SHAILER PARK, QLD 4128

GRAND FAMILY HOME IN HEART OF SHAILER PARK

Sprawling across a generous block with the nature strip as your back neighbour, this expansive family home has been thoughtfully designed to accommodate the biggest of families without compromising on comfort.

Boasting five bedrooms, three with ensuites, multiple living spaces spread across two levels and spacious kitchen with butler's pantry which is sure to delight the head chef! Neutral tones, timber accents and high end finishings to a tasteful renovation, this is a home to behold!

The outdoors cannot disappoint, featuring an enormous covered entertaining space with built-in kitchen, an elegant inground saltwater swimming pool, loads of space for playing and enjoying the great outdoors, all encased in a private backyard. The triple lockup garage offers additional storage and drive through access to the backyard for convenience.

Marketing agent Nathan Strudwick says "This a fantastic family-oriented property in a cracking location! Everything at your fingertips while still having peace and privacy. This one needs to be seen Saturday!"

TYPE: For Sale

INTERNET ID: 37P6036

SALE DETAILS

Contact Agent

CONTACT DETAILS

Elders Real Estate Shailer Park

4/54 Bryants Road
Shailer Park, QLD
(07) 3440 8500

Nathan Strudwick
0455 588 777

INSIDE:

- Five bedrooms, three with ensuites
- Master retreat with WIR & spa ensuite
- Main bathroom with tub plus additional powder room
- Multiple living areas across two levels
- Gourmet kitchen with butler's pantry, stone benchtops, induction cooktop & pyrolytic oven
- Ducted air conditioning throughout (split system in office)
- Ceiling fans throughout
- Security screens

OUTSIDE:

- 1237m² block
- Expansive entertaining space with outdoor kitchen & roller blinds
- Inground saltwater swimming pool
- Triple lockup garage with storage & drive through access
- Ample off-street parking
- Fire pit area
- Playground
- Garden shed
- Established, low maintenance gardens

SERVICES:

- Town water & sewerage
- NBN ready
- 13.2KW Solar system with 9.6KW battery
- 3 phase power
- Built-in home theatre stereo, speakers & projector

LOCATION:

- Peaceful street position
- Walk to the bus stop
- Walk to mountain bike and walking trails
- Close to Alamanda Drive shops
- 5 minutes to John Paul College

- 5 minutes to Hyperdome & public transport
- 15 minutes to Chisholm College
- Easy access to the M1
- 30 minutes to Brisbane CBD
- 30 minutes to Brisbane Airport
- 40 minutes to the Gold Coast

Disclaimer: We have in preparing this information used our best endeavours to ensure that the information contained herein is true and accurate, but accept no responsibility and disclaim all liability in respect of any errors, omissions, inaccuracies or misstatements that may occur. Prospective purchasers should make their own enquiries to verify the information contained herein.

Other features: 3 Phase Power, Bush Retreat, Close to Schools, Close to Shops, Close to Transport, Pool

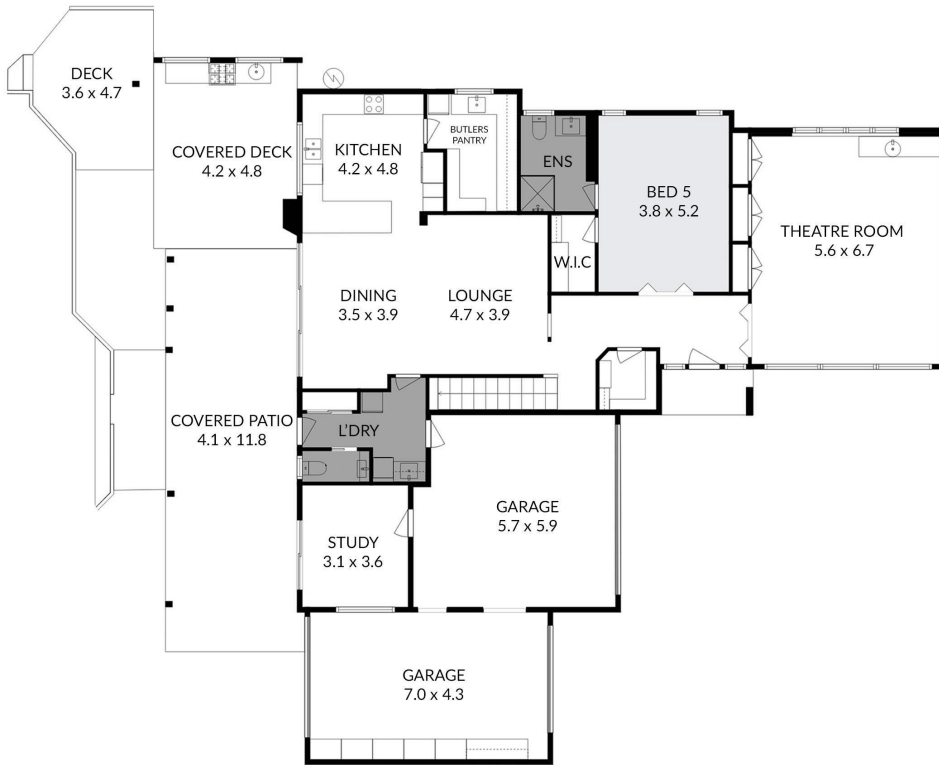
- Land Area 1,237.00 square metre
- Bedrooms: 5
- Bathrooms: 4
- 3 car garage
- Ensuite



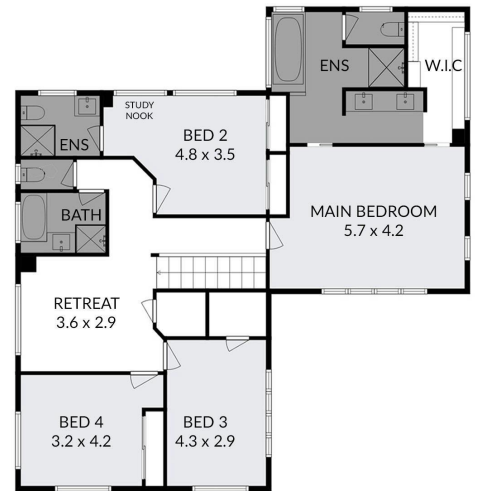








GROUND FLOOR



FIRST FLOOR



14 MARANA STREET, SHAILER PARK

Bed 5 Bath 4 Car 3

Nathan Strudwick 0432 165 631

Measurements are approximate only and no responsibility is taken for any error, omission, or mis-statement. This is for illustrative purposes only and should be used as such by any prospective purchaser.