

## 6-8 Beverley Avenue, ROCHEDALE SOUTH, QLD 4123

### Brand New Modern Apartment – Prime Location!

Move in ready! Discover effortless modern living in this stylish 3-bedroom apartment located in a boutique complex.

#### Features You'll Love:

- 3 spacious bedrooms with ceiling fans
- Main bedroom with air conditioning, ensuite, walk-in robe, and private balcony
- Light-filled, open plan living/dining area â## fully carpeted and air conditioned with direct balcony access
- Modern kitchen with dishwasher and electric stove and glass cooktop
- Stylish downlights throughout
- Convenient hideaway laundry
- Secure intercom system and keyless entry
- Includes 2 carparks

The particulars contained herein are supplied for information only and shall not be taken as a representation in any respect on the part of the vendor or its agent. Interested parties should contact the nominated person or office for full and current details.

**TYPE:** For Sale

**INTERNET ID:** 37P6058

#### SALE DETAILS

**Contact Agent**

#### CONTACT DETAILS

**Elders Real Estate Shailer Park**

4/54 Bryants Road  
Shailer Park, QLD  
(07) 3440 8500

**Nathan Strudwick**  
0455 588 777

Location Perks:

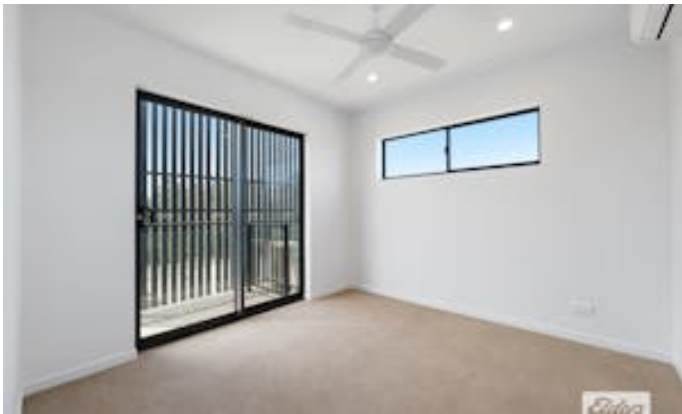
- Close to public transport, schools and everyday essentials
- Walking distance to new Eight Mile Plain Busway with direct bus into the city
- Sought-after area in a prime location

Whether you're a first home buyer, downsizer or savvy investor, this is one opportunity not to miss!

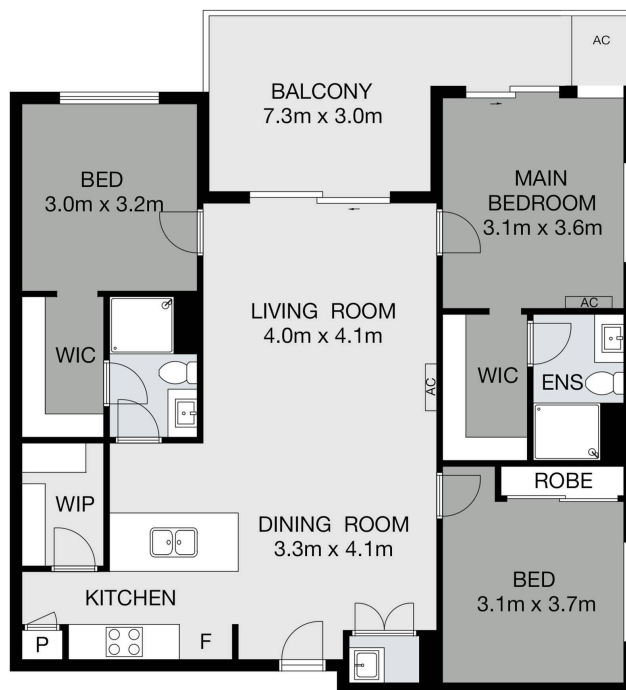
Ready to move in â## book your inspection today!

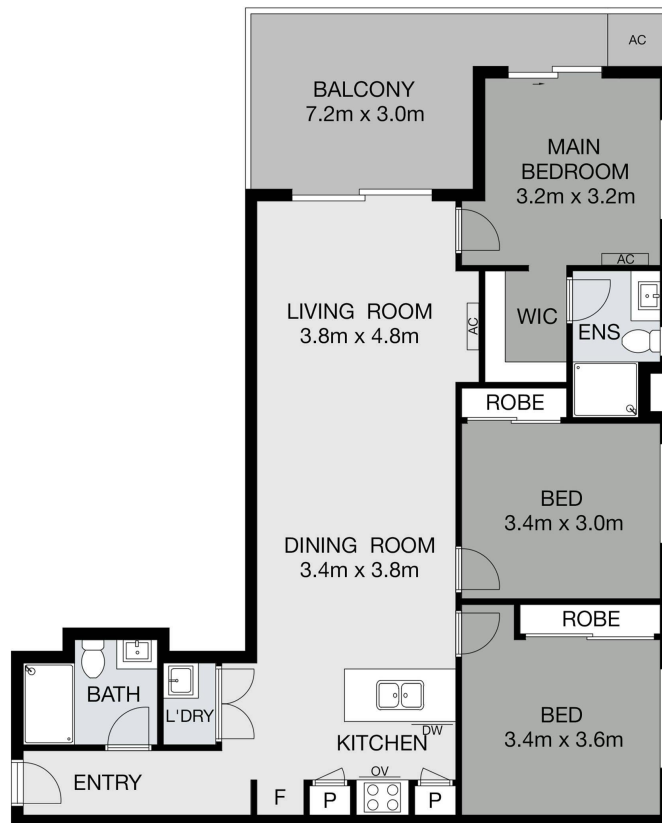
- Bedrooms: 3
- Bathrooms: 2
- Car Parks: 2











Elders Real Estate

U221 6-8 BEVERLEY AVE, ROCHEDALE SOUTH

Bed 3 Bath 2 Car 2

Nathan Strudwick 0432 165 631

Measurements are approximate only and no responsibility is taken for any error, omission, or mis-statement. This is for illustrative purposes only and should be used as such by any prospective purchaser.