



58 Jasmine Crescent, SHAILER PARK, QLD 4128

VAST FAMILY HOME WITH TREETOP VIEWS!

Proudly situated, high and dry on a 1,066m² block in Shailer Park. This lovingly maintained and revamped home will allow you to take time out of your busy schedule and relax in serenity. Inside it's generous floorplan boasts five bedrooms, three bathrooms, multiple living areas and the comfort of ducted air conditioning.

Charming features including polished timber floorboards, neutral tones and an abundance of natural light bring warmth to this home. A spacious kitchen at the heart allows the avid chef to oversee festivities with an open plan layout.

Take in tranquil surrounds overlooking the in-ground resort style swimming pool and views over Shailer Park with multiple outdoor entertaining spaces. With the ever-evolving family in mind, this property offers peace and privacy with the functionality to accommodate the whole family.

Marketing agent Nathan Strudwick said, "A beautiful home in one of Shailer Park's most tightly held streets! Fully fenced for privacy and security, this is a fantastic property for your family with potential for dual living on the lower level. Call today for an inspection."

TYPE: For Sale

INTERNET ID: 37P6201

SALE DETAILS

Contact Agent

CONTACT DETAILS

Elders Real Estate Shailer Park

4/54 Bryants Road
Shailer Park, QLD
(07) 3440 8500

Nathan Strudwick
0455 588 777

Inside:

- Five generous bedrooms
- Two bedrooms with ensuites
- Three modern bathrooms plus powder room
- Spacious kitchen with stone benchtops & gas cooktop (plumbing for fridge available)
- Multiple living spaces
- Timber flooring throughout
- Ducted air conditioning throughout
- Security screens throughout
- Laundry with additional toilet on lower level
- Sub storage
- Oversized double lockup garage with internal access

Outside:

- 1,066m2 block
- Multiple entertaining decks
- Covered patio area
- Inground saltwater swimming pool
- Established tropical gardens
- Electric gated entry
- Fully fenced

SERVICES:

- Town water & sewerage
- 5KW approx. solar system
- Security cameras
- Security alarm system
- Intercom system
- Rainwater tank
- NBN ready

LOCATION:

- Walk to Logan Hyperdome and public transport
- Close to Chisholm Catholic College
- Close to Kilkenny Park and bike/walking tracks

- Close to Woolworths Cornubia shopping centre
- Close to Saint Matthews Catholic Primary School
- Easy access to M1 Motorway
- 5 minutes to Calvary Christian College
- 5 minutes to the Logan Hyperdome
- 5 minutes to the Brisbane busway
- 35 minutes to Brisbane airport
- 30 minutes to Brisbane CBD
- 40 minutes to Gold Coast

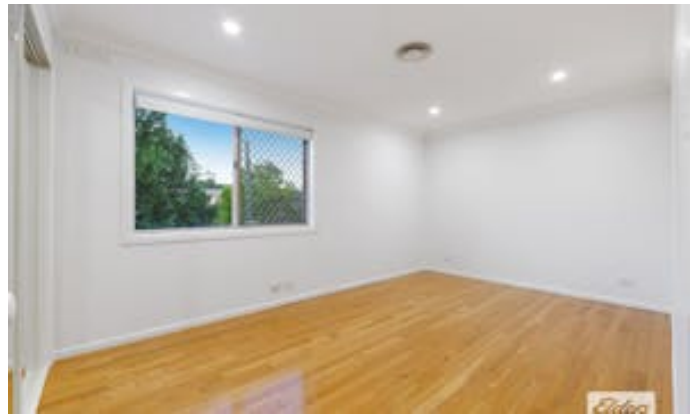
Disclaimer: We have in preparing this information used our best endeavours to ensure that the information contained herein is true and accurate, but accept no responsibility and disclaim all liability in respect of any errors, omissions, inaccuracies or misstatements that may occur. Prospective purchasers should make their own enquiries to verify the information contained herein.

Other features: Close to Schools, Close to Shops, Close to Transport, Pool, Prestige Homes, Security System

- Land Area 1,066.00 square metre
- Bedrooms: 5
- Bathrooms: 3
- Double garage
- Ensuite
- Floorboards



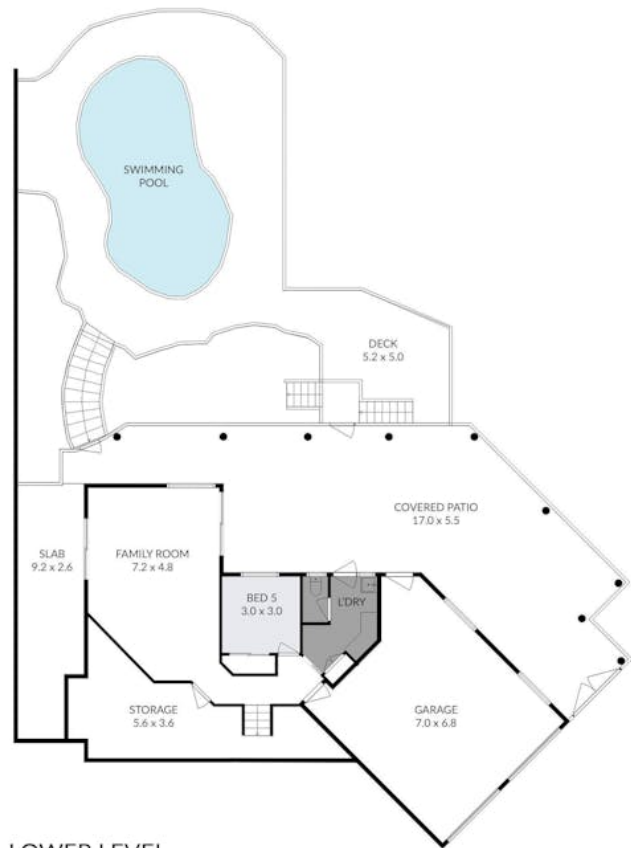








ENTRY LEVEL



LOWER LEVEL



58 JASMINE CRESCENT, SHAILER PARK

Bed 5 Bath 3 Car 2

Nathan Strudwick 0432 165 631

Measurements are approximate only and no responsibility is taken for any error, omission, or mis-statement. This is for illustrative purposes only and should be used as such by any prospective purchaser.