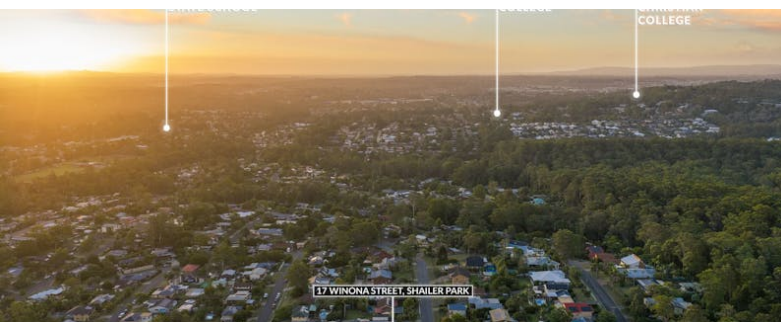




OUTLINE INDICATIVE ONLY. BOUNDARY LINES ARE APPROXIMATE AND TO BE USED AS A GUIDE ONLY. BUYERS SHOULD CONDUCT THEIR OWN INDEPENDENT ENQUIRIES TO DETERMINE THE PROPERTY BOUNDARIES.



## 17 Winona Street, SHAILER PARK, QLD 4128

### RIDING HIGH ON WINONA STREET!

Lowset and sprawling over a 1029m<sup>2</sup> block, this property awaits a new family to call it home. Located in Shailer Park's heart, 17 Winona Street boasts an abundance of space in a tidy parcel.

Featuring four bedrooms, two bathrooms, multiple living spaces and a cottage style kitchen, this home is full of charm. Exposed brick features bring warmth to cozy spaces and low maintenance flooring throughout make for easy keeping.

A covered outdoor entertaining space overlooks a resort style inground swimming pool, the perfect spot to spend your Summers. The fully fenced backyard is easily accessible via the drive through carport and provides ample space for kicking or chasing a ball with the potential to add a granny flat/shed, subject to approvals.

Marketing agent Nathan Strudwick said, "The opportunity in Shailer Park that you've been waiting for. A perfect layout for families with clear side access and future potential (STCA) to add a shed/granny flat! I'll see you Saturday."

Inside:

The particulars contained herein are supplied for information only and shall not be taken as a representation in any respect on the part of the vendor or its agent. Interested parties should contact the nominated person or office for full and current details.

**TYPE:** For Sale

**INTERNET ID:** 37P6224

**SALE DETAILS**

**CONTACT AGENT**

**CONTACT DETAILS**

**Elders Real Estate Shailer Park**

4/54 Bryants Road  
Shailer Park, QLD  
(07) 3440 8500

**Nathan Strudwick**  
0455 588 777

â## Four bedrooms

â## Two bathrooms (one with tub)

â## Study/home office

â## Multiple living areas

â## Family kitchen with ample cabinet space & electric cooktop

â## Ceiling fans throughout

â## Split system air conditioning

â## Security screens throughout

â## Laundry

Outside:

â## 1029m2

â## Side access

â## Carport

â## Covered patio area

â## Inground saltwater swimming pool

â## Fully fenced back yard

â## Garden shed

â## Established gardens

SERVICES:

â## Town water & sewerage

â## NBN ready

LOCATION:

â## Close to John Paul College & St Edwards Catholic College

â## Close to Kimberley Park State School

â## 5 minutes to Logan Hyperdome

â## 5 minutes to Brisbane busway

â## 10 minutes to Chisholm College

â## 10 minutes to Calvary Christian College

â## 15 minutes to Sirromet winery

â## 20 minutes to Movieworld, Wet'n'Wild & Dreamworld

â## 30 minutes to Brisbane airport

â## 30 minutes to Brisbane

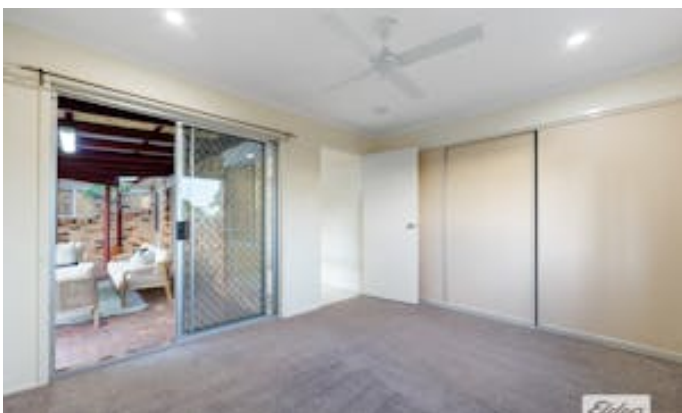
â## 40 minutes to Gold Coast

Other features: Close to Schools, Close to Shops, Close to Transport, Pool

- Land Area 1,029.00 square metre
- Bedrooms: 4
- Bathrooms: 2
- Double carport





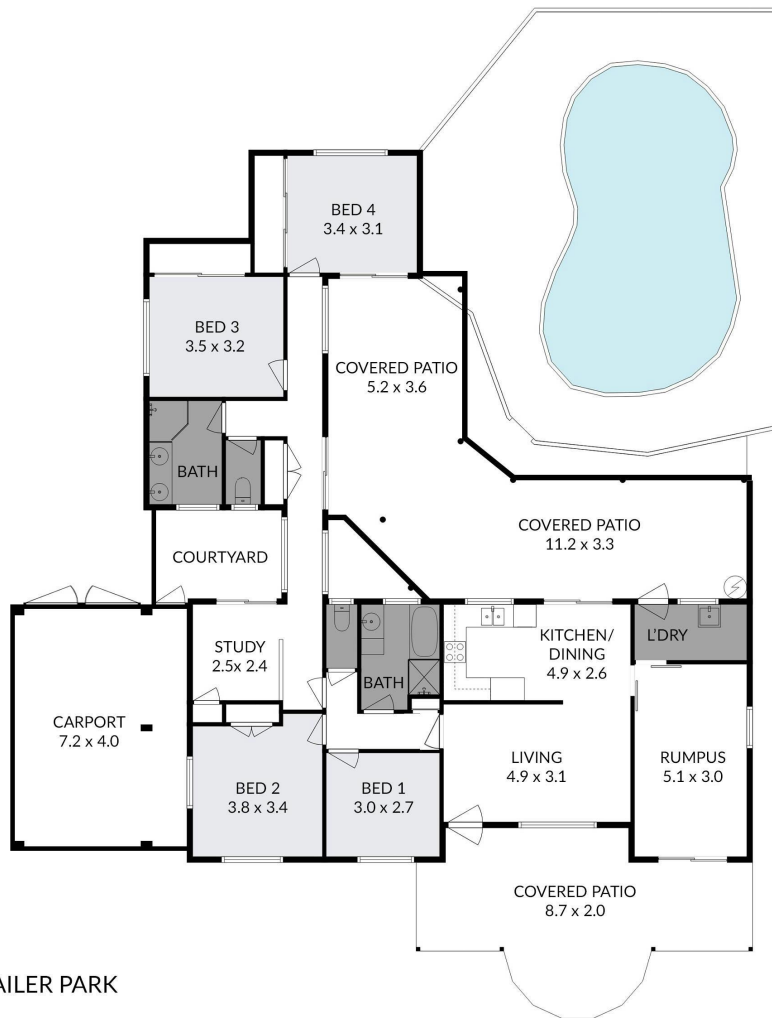












17 WINONA STREET, SHAILER PARK

Bed 4
 Bath 2
 Car 2

Nathan Strudwick 0432 165 631

Measurements are approximate only and no responsibility is taken for any error, omission, or mis-statement. This is for illustrative purposes only and should be used as such by any prospective purchaser.