



## 22 Jacqueline Avenue, SPRINGWOOD, QLD 4127

JAC JAC JACQIEEE!

Welcome to 22 Jacqueline Avenue, the optimal dual living potential or investment cash cow!

Featuring three bedrooms, two bathrooms, kitchen and kitchenette with multi-use spaces to do with what you will. Positioned on a 637m2 block in the heart of Springwood, amenities are at your fingertips with easy access to the M1 in both directions, locations don't get better.

Downstairs offers an epic entertaining zone with a "man cave" and covered outdoor area equipped with pool table and ceiling fan â## perfect for a BBQ on a balmy Queensland evening. Side access and an additional slab in the backyard make for easy storage of the trailer and toys.

Marketing Agent Nathan Strudwick said, "The opportunities are endless! Make this your own or convert to an investment that will keep on giving. Give us a call today!"

Upstairs:

**TYPE:** For Sale  
**INTERNET ID:** 37P6234

### SALE DETAILS

[Contact Agent](#)

### CONTACT DETAILS

**Elders Real Estate Shailer Park**

4/54 Bryants Road  
Shailer Park, QLD  
(07) 3440 8500

**Nathan Strudwick**  
0455 588 777

â##Three bedrooms with built-ins

â##Central bathroom with tub

â##Open plan living/dining

â##Galley style kitchen with electric cooktop

â##Ceiling fans throughout

â##Timber flooring

Downstairs:

- Mancave with bar
- Multipurpose space
- Kitchenette
- Bathroom
- Laundry
- Single lockup garage with storage

Outside:

â##637m2 block

â##Front & rear balconies

â##Covered entertaining patio with spa

â##Side access

â##Garden shed

â##Additional slab for parking trailer etc or adding a shed

â##Plenty of lush grass to kick a ball

SERVICES:

â##Town water & Sewerage

â##NBN ready

â##5KW approx. solar system (22 panels)

LOCATION:

â##Walk to bus stop

â##Walk to Springwood State High & Primary Schools

â##Close to Springwood Conservation Park and walking trails

â##5 minutes to John Paul College

â##Walking distance to Arndale & Centro Shopping Centres

â##5 minutes to Daisy Hill Koala Park

â##Easy access to M1

â##10 minutes to the Logan Hyperdome or Westfield Mt Gravatt

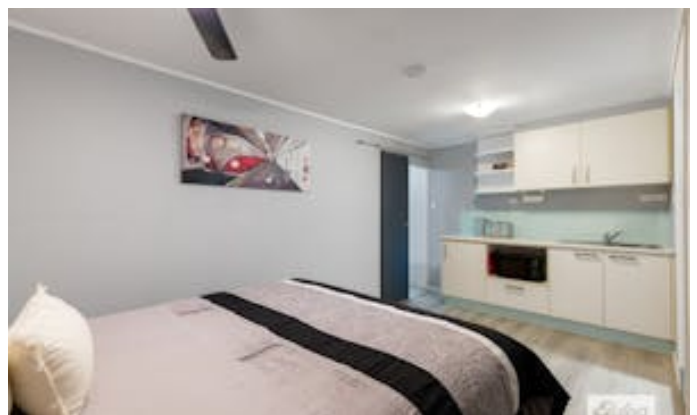
Disclaimer: We have in preparing this information used our best endeavours to ensure that the information contained herein is true and accurate, but accept no responsibility and disclaim all liability in respect of any errors, omissions, inaccuracies or misstatements that may occur. Prospective purchasers should make their own enquiries to verify the information contained herein.

Other features: Close to Schools, Close to Shops, Close to Transport

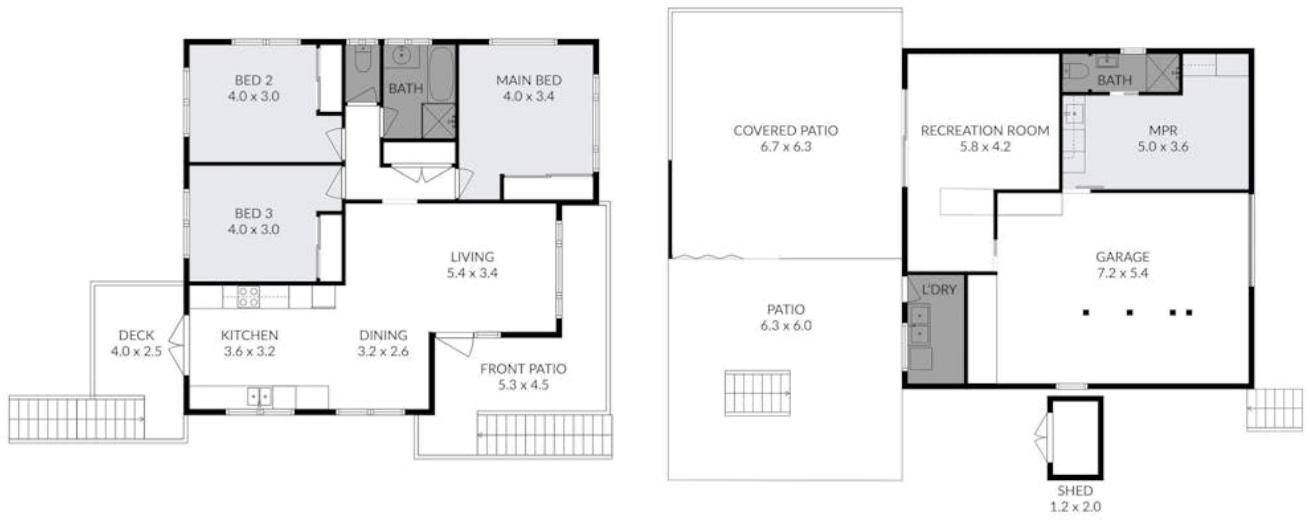
- Land Area 637.00 square metres
- Bedrooms: 3
- Bathrooms: 2
- Single garage
- Floorboards











ENTRY LEVEL

LOWER LEVEL



22 JACQUELINE AVENUE, SPRINGWOOD

Bed 3 Bath 2 Car 2

Nathan Strudwick 0432 165 631

Measurements are approximate only and no responsibility is taken for any error, omission, or mis-statement. This is for illustrative purposes only and should be used as such by any prospective purchaser.