

43-45 Penelope Drive, CORNUBIA, QLD 4130

MASSIVE PROPORTIONS ON PENELOPE!

Positioned on a sprawling 2,372m² block, this generous home would suit the ever-expanding family, multigenerational families or ultimate entertainers. Featuring a total of five spacious bedrooms, three modern bathrooms, an expansive chef's kitchen and multiple living spaces â## inside and out.

The master suite boasts an enormous walk-in robe and his/hers spa ensuite for retreating from the hustle and bustle of daily life. A family chef will not be disappointed by a gourmet kitchen with island, stone benchtops and Bosche induction cooktop opening onto the alfresco dining space overlooking the lush bush backdrop.

Downstairs is designed for the potential of dual living or an epic teenage retreat. Another outdoor entertaining space overlooks a feature pond with bridge and inground swimming pool with privacy of treetops around.

Marketing Agent Nathan Strudwick said, "We love big and beautiful! A monster of a home in a stunning setting with amenities moments away, what more could you want?"

Upstairs:

The particulars contained herein are supplied for information only and shall not be taken as a representation in any respect on the part of the vendor or its agent. Interested parties should contact the nominated person or office for full and current details.

TYPE: For Sale

INTERNET ID: 37P6321

SALE DETAILS

CONTACT AGENT

CONTACT DETAILS

Elders Real Estate Shailer Park

4/54 Bryants Road
Shailer Park, QLD
(07) 3440 8500

Nathan Strudwick
0455 588 777

•••Four spacious bedrooms with built-ins, two with balcony access

•••Master with huge WIR & spa ensuite

•••Two modern bathrooms

•••Home office/study

•••Separate living & dining areas

•••Chef's kitchen with island, stone benchtops & induction cooktop

•••Alfresco dining/entertaining

•••Split system air-conditioning x 3

•••Ceiling fans

Downstairs:

•One spacious bedroom

•Modern bathroom

•Two separate living areas

•Built-in bar

•Ceiling fans

•Large storage space

•Laundry

•Double lockup garage with internal access

•Covered entertaining terrace

Outside:

•••2,372m2 block

•••Inground saltwater swimming pool

•••Pond with bridge

•••2 x Gazebos

•••Established low maintenance landscaping

•••Bush backdrop

SERVICES:

•••Town water & sewerage

•••NBN connected - 1000 Mbps download

•••2 x rainwater tanks

•••4.5KW approx. solar system

LOCATION:

â##Close to Chisholm College

â##Close to Woolworths Cornubia

â##5 minutes to Logan Hyperdome

â##5 minutes to Brisbane busway

â##5 minutes to Calvary Christian College

â##15 minutes to John Paul College

â##15 minutes to Sirromet winery

â##20 minutes to Dreamworld

â##30 minutes to Brisbane airport

â##30 minutes to Brisbane CBD

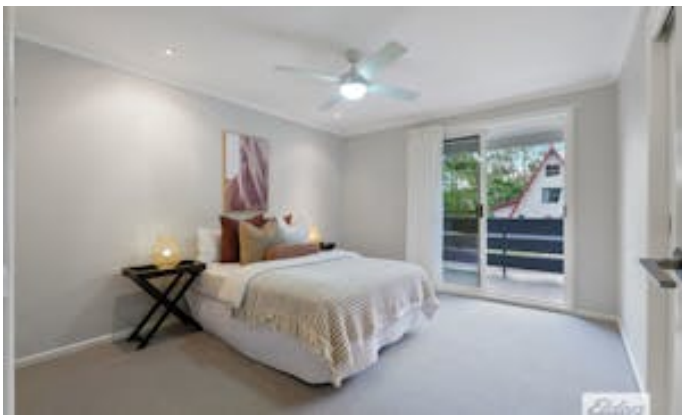
â##40 minutes to Gold Coast

Disclaimer: We have in preparing this information used our best endeavours to ensure that the information contained herein is true and accurate, but accept no responsibility and disclaim all liability in respect of any errors, omissions, inaccuracies or misstatements that may occur. Prospective purchasers should make their own enquiries to verify the information contained herein.

Other features: Bush Retreat, Close to Schools, Close to Shops, Close to Transport, Prestige Homes

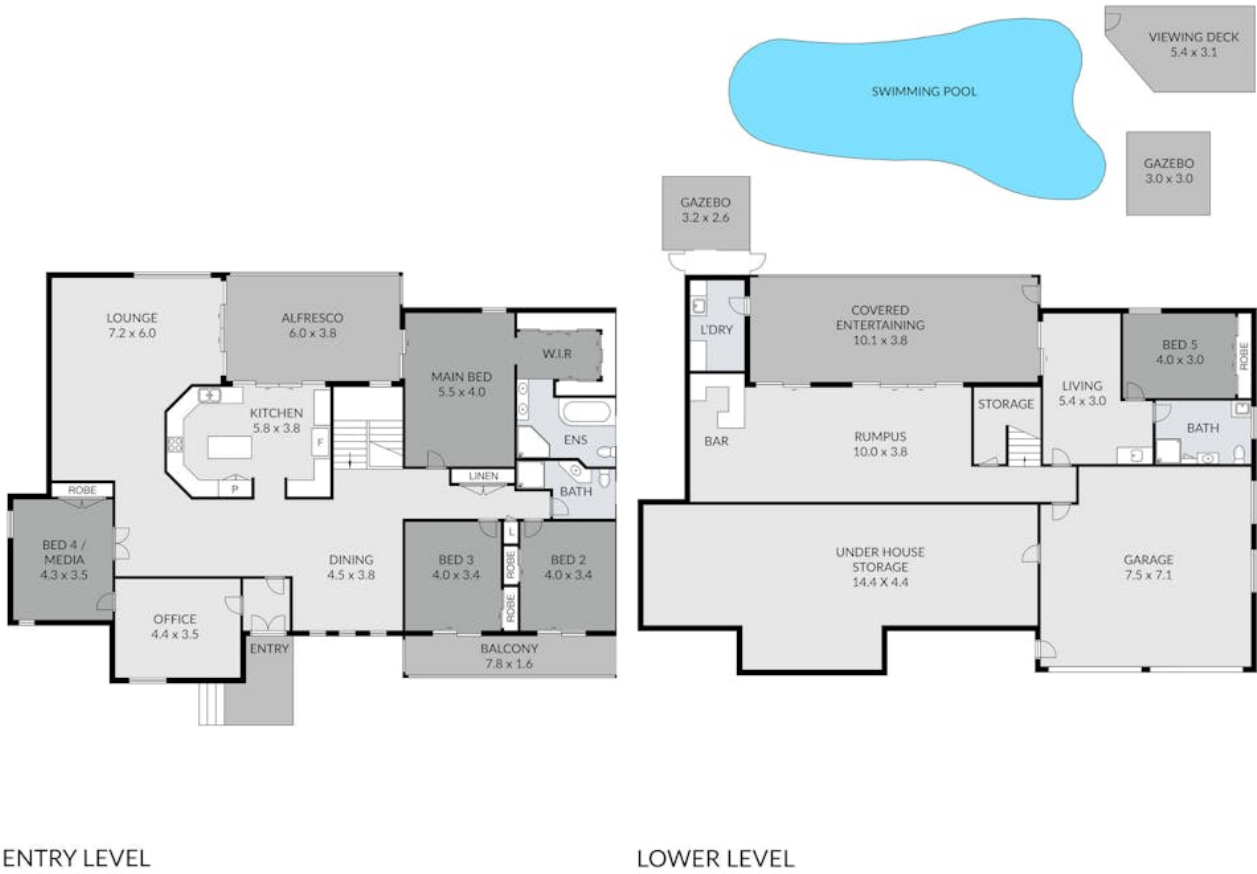
- Land Area 2,372.00 square metres
- Bedrooms: 5
- Bathrooms: 3
- Double garage
- Ensuite











43-45 PENELOPE DRIVE, CORNUBIA

Bed 5 Bath 3 Car 2

Nathan Strudwick 0432 165 631

Measurements are approximate only and no responsibility is taken for any error, omission, or mis-statement. This is for illustrative purposes only and should be used as such by any prospective purchaser.