

21 Tahan Crescent, TANAH MERAH, QLD 4128

EVERY SURFACE COMPLETELY TRANSFORMED FOR MODERN LIVING!

Completely transformed for modern living 21 Tahan Crescent delivers a high-end renovation in an elevated, private setting. Greeted by a grand double-height entry creating an immediate sense of scale, this magnificent two-storey home boasts a versatile floorplan with multiple living zones offering the ideal balance of separation for privacy and connection for family living.

Showcasing four spacious bedrooms, two ultra-modern bathrooms and an enviably sleek kitchen with stone benchtops, high-end appliances and integrated dishwasher for seamless functionality. Beautifully appointed, features of this home include brushed copper tapware, timber accents, terrazzo surfaces and feature tiles for a warm, luxurious feel.

A grand stature atop Tanah Merah and backing onto Trusan Park, enjoy the peace and quiet of no back neighbours and indulge in that bush backdrop. Showcasing two distinct outdoor lifestyle zones for year round entertainment. Don't stop there, this home enjoys views to the South-West so sunsets have never looked better!

Nathan Strudwick is marketing this property, "No stone has been left unturned in this immaculate renovation! This is high-end luxury living in the suburbs. Inspect this one to

The particulars contained herein are supplied for information only and shall not be taken as a representation in any respect on the part of the vendor or its agent. Interested parties should contact the nominated person or office for full and current details.

TYPE: For Sale

INTERNET ID: 37P6351

SALE DETAILS

[Contact Agent](#)

CONTACT DETAILS

Elders Real Estate Shailer Park

4/54 Bryants Road
Shailer Park, QLD
(07) 3440 8500

Nathan Strudwick
0455 588 777

appreciate it!"

Inside:

- Four bedrooms with built-ins
- Oversized master suite with double vanity ensuite & WIR
- Main bathroom with tub & separate toilet
- Designer 2-pac kitchen with stone benchtops & high-end appliances
- Separate living zones
- Split system air-conditioning throughout
- Ceiling fans throughout
- Security screens throughout
- Modern laundry
- Double lockup garage with extra high ceilings & vinyl flooring

Outside:

- 1,058m2 elevated block
- Pergolux louvered overed entertaining zone
- Firepit area for open-air entertaining
- Generous grassed yard capturing elevated outlooks & views
- Side access providing secure parking for boat/caravan/trailer
- Retaining walls in place for future development or enhancements STCA
- Low maintenance landscaped gardens

SERVICES:

- Town water & sewerage
- NBN connected
- MyQ App, remote access & control
- Hardwired CCTV system
- Integrated LED accent lighting

LOCATION:

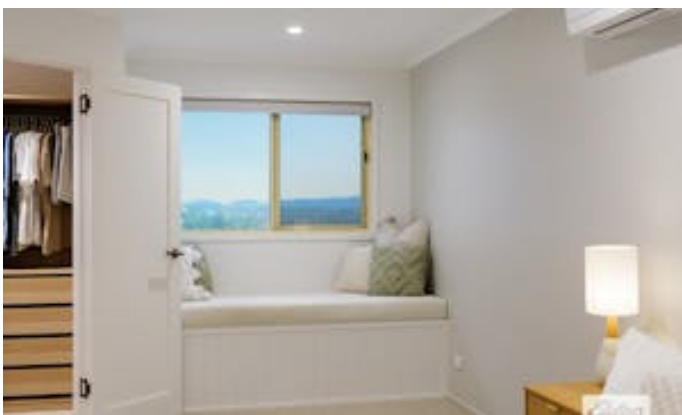
- Close to the Logan Hyperdome
- Close to Brisbane busway
- Bush backdrop
- Close to public and private schools

- 5 minutes to Chisholm College
- 5 minutes to Parks and walking trails along the Logan River
- 8 minutes to River Lakes Golf Course
- 10 minutes to Calvary Christian College
- 10 minutes to John Paul College
- 15 minutes to Sirromet winery
- 30 minutes to Brisbane airport
- 30 minutes to Brisbane
- 30 minutes to Gold Coast

Other features: Close to Schools, Close to Shops, Close to Transport

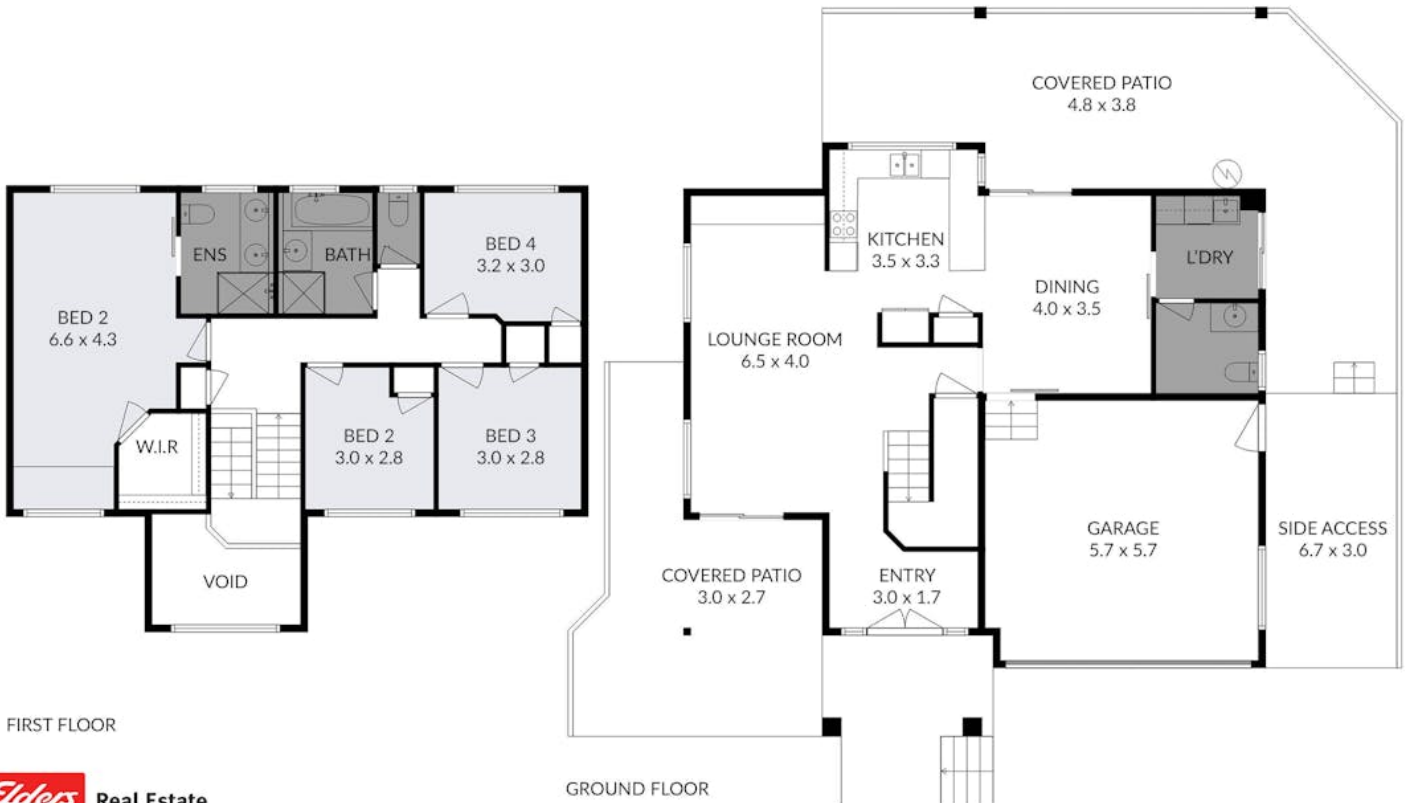
- Land Area 1,058.00 square metre
- Bedrooms: 4
- Bathrooms: 2
- Double garage
- Ensuite











21 TAHAN CRESCENT, TANAH MERAH

Bed 4 Bath 2 Car 2

Nathan Strudwick 0432 165 631

Measurements are approximate only and no responsibility is taken for any error, omission, or mis-statement. This is for illustrative purposes only and should be used as such by any prospective purchaser.