

63-65 Kimberley Drive, SHAILER PARK, QLD 4128

Elevated, Elegant & Designed to Impress!

Enjoy elevated forest views from this contemporary home, perfectly positioned just minutes to local amenities and parklands.

Featuring high ceilings, sleek tiled floors and a fresh white palette the home offers generous space for families of all stages.

The main level offers seamless open plan living and entertaining, flowing to a covered deck with tranquil views, a tiled plunge pool and a fully equipped outdoor kitchen.

INSIDE:

- Five bedrooms with built-in robes
- Master with ensuite and walk in robe
- Guest bedroom and bathroom at entry
- Three bathrooms

TYPE: For Rent

INTERNET ID: 37P6360

RENTAL DETAILS

Rent / Lease:

\$1400 pw

CONTACT DETAILS

Elders Real Estate Shailer Park

4/54 Bryants Road
Shailer Park, QLD
(07) 3440 8500

Monique Robinson
0433 646 015

- Modern kitchen with stone benchtops & induction cooking
- Outdoor kitchen
- Open plan kitchen/living & dining
- Media room
- Wrap around outdoor entertaining with views
- Ducted air con
- Vacuum maid (ducted vacuum)
- Solar Panels
- Ceiling fans throughout
- Three car garage with internal access

OUTSIDE:

- Plunge pool with water feature
- Side access

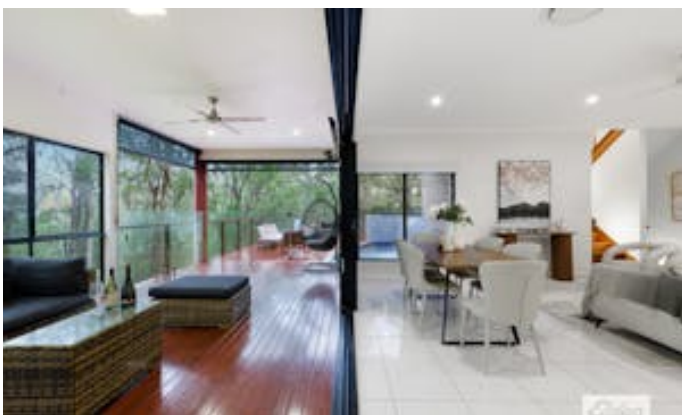
LOCATION:

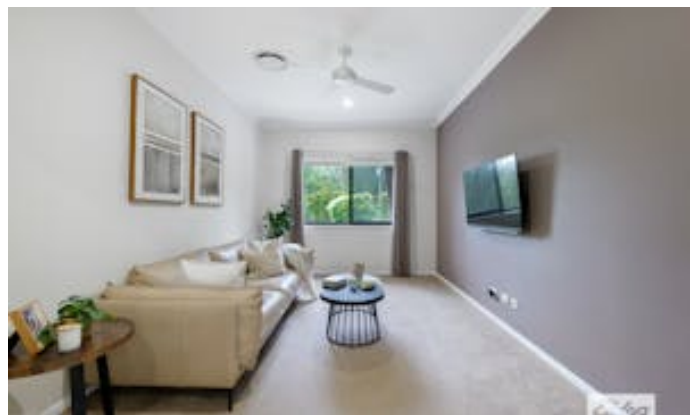
- Close to Kimberley Park State School
- Walk to child care
- 3 minutes to Logan Hyperdome
- 3 minutes to Brisbane busway
- 10 minutes to Chisholm College
- 10 minutes to John Paul College

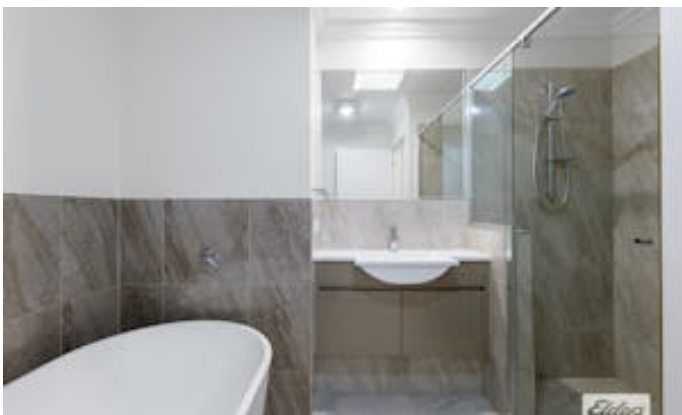
*** To book an inspection time, please register online. Once you have registered, we can notify you of any upcoming inspections, time changes or cancellations. ***

Other features: Close to Schools, Close to Shops, Close to Transport, Pool

- This property is: Unfurnished
- Pets: No
- Available Now
- Land Area 1,502.00 square metre
- Bedrooms: 5
- Bathrooms: 3
- 3 car garage
- Ensuite











Lower Level



Upper Level

This floor plan is not to scale. Areas and dimensions are approximate and therefore floor plan should only be used for illustrative purposes. Plants and furnitures are decorative only.

63-65 Kimberley Drive, Shailer Park

5 3 3