

9 Jasmine Crescent, SHAILER PARK, QLD 4128

SPACIOUS FAMILY LIVING WITH DUAL LIVING POTENTIAL ON 1,022M²

Positioned on a generous 1,022m² corner block in one of Shailer Park's most sought-after pockets, this beautifully renovated family home delivers space, flexibility and lifestyle in equal measure. Offering multiple living zones, four bedrooms, three bathrooms and a separate self-contained retreat, this is the perfect opportunity for large families, multigenerational living.

Freshly updated throughout with modern kitchens, stylish bathrooms and a contemporary colour palette, the home is move-in ready while still retaining the warmth and character of a true family residence. Outside, an expansive covered entertaining area overlooks the huge backyard, providing endless space for children, pets and future additions such as a pool or shed.

Luke van Wijk Says: "Properties that offer genuine flexibility are becoming harder and harder to find. Whether you're accommodating extended family, looking for a teenager's retreat, working from home or wanting potential rental income, this floorplan provides options that most homes simply can't match. Combined with the 1,022m² block, renovated interiors and fantastic Shailer Park location, this is a property that will appeal to a wide range of buyers and stand the test of time."

TYPE: For Sale

INTERNET ID: 37P6405

SALE DETAILS

CONTACT AGENT

CONTACT DETAILS

Elders Real Estate Shailer Park

4/54 Bryants Road
Shailer Park, QLD
(07) 3440 8500

Luke Van Wijk
0438 015 656

INSIDE:

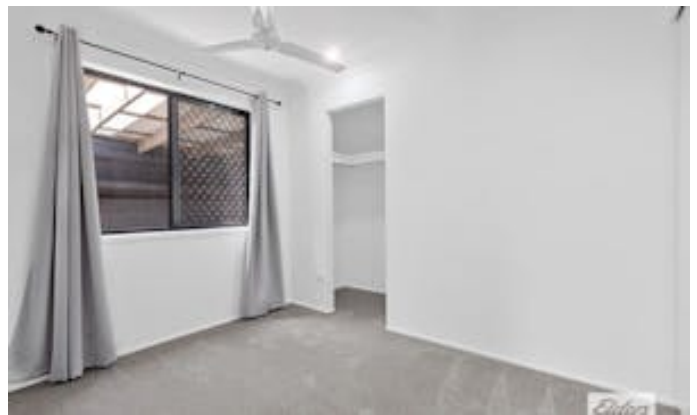
- Four bedrooms
- Three modern bathrooms
- Multiple spacious living areas including lounge, family room and rumpus/meals area
- Open-plan dining adjoining the kitchen
- Separate self-contained retreat with living area, bedroom and bathroom
- Ducted air-conditioning throughout key living spaces and bedrooms
- Ceiling fans throughout
- Flexible floorplan ideal for extended families, teenagers or home business use

OUTSIDE:

- 1,022m² block
- Covered outdoor entertaining area
- Large, level backyard with room for children and pets to play
- Beautifully landscaped gardens with established palms and mature trees
- Fully fenced backyard
- 6.6kw Solar Panels and converter
- Double lock-up garage and double carport
- Potential space for a pool, shed or further improvements (STCA)
- Attractive street appeal with manicured gardens

LOCATION:

- Walking distance to Cornubia Park Sports Centre
- Close to Shailer Park State Primary and High High School, John Paul College, St Edward's Catholic School, Saint Matthews Catholic Primary
- Minutes to Logan Hyperdome Shopping Centre
- Easy access to the M1 for Brisbane and Gold Coast commuters
- Nearby parks, walking tracks and sporting facilities
- Close to public transport options
- Positioned within a highly desirable family-oriented neighbourhood
 - Land Area 1,022.00 square metre
 - Bedrooms: 4
 - Bathrooms: 3
 - Car Parks: 4







9 Jasmine Crescent SHAILER PARK

1027m²

4 Bed

3 Bath

2 Car

DISCLAIMER

Plans are shown for marketing purposes only. All dimensions are approximate; they are subject to errors and inaccuracies and no liability will be accepted.

