



21 Aletta Street, SHAILER PARK, QLD 4128

Your Perfect Family Upgrade Starts Here

Beautifully renovated and perfectly positioned on a huge 1030m² block, this spacious family home offers stylish living with exceptional indoor and outdoor entertaining. Featuring open plan living and dining, a designer kitchen with quality appliances, multiple living areas, renovated bathrooms and a spectacular elevated deck overlooking the expansive backyard.

With side access, parking for four vehicles, solar power, air-conditioning and plenty of space for the whole family, this home has everything you need in a quiet pocket of Shailer Park close to schools, shops, parks and M1 access.

Property features:

- 3 bedrooms with built-ins and ceiling fans
- Additional multipurpose room/home office downstairs
- Renovated kitchen and bathrooms
- Spacious open plan living and dining

TYPE: For Rent

INTERNET ID: 37P6411

RENTAL DETAILS

Rent / Lease:

\$950 pw

CONTACT DETAILS

Elders Real Estate Shailer Park

4/54 Bryants Road
Shailer Park, QLD
(07) 3440 8500

Monique Robinson
0433 646 015

- Huge entertaining deck
- Large fully fenced backyard with side access
- Double garage plus double carport
- Solar power with battery system
- Air-conditioning and ceiling fans throughout

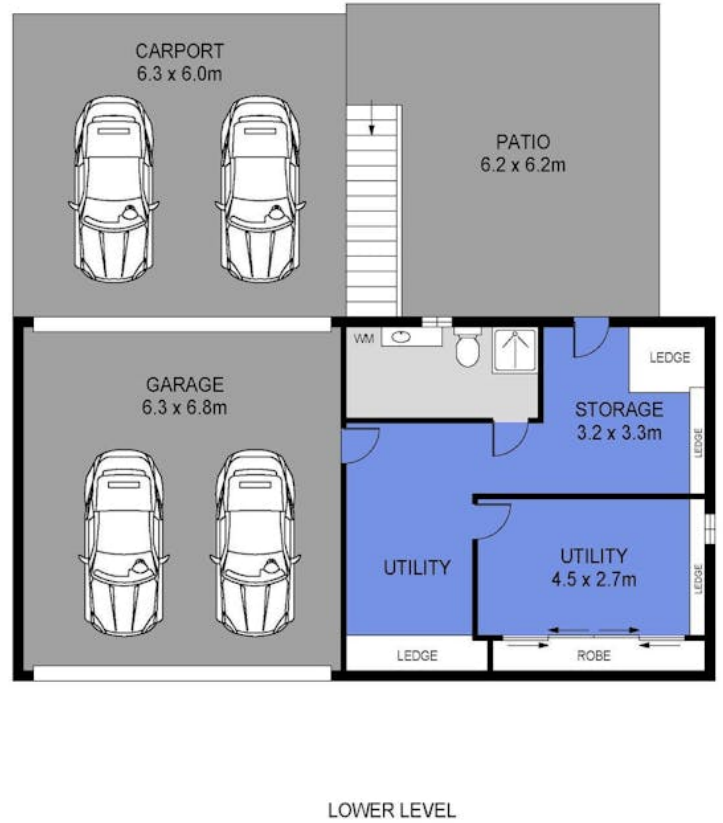
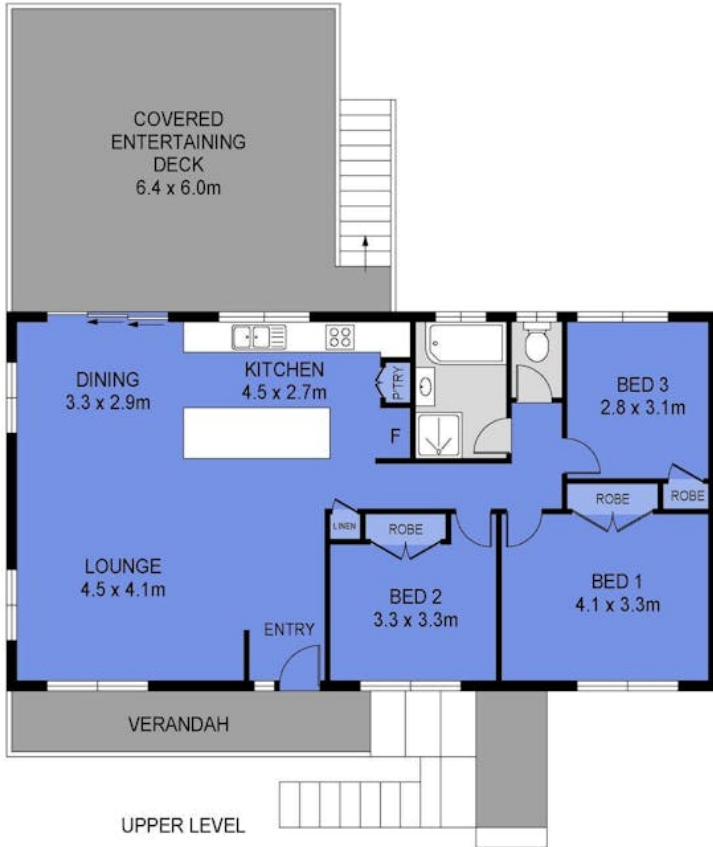
*** To book an inspection time, please register online. Once you have registered, we can notify you of any upcoming inspections, time changes or cancellations. ***

Other features: Close to Schools, Close to Shops, Close to Transport

- This property is: Unfurnished
- Pets: No
- Available on: 05/06/26
- Land Area 1,030.00 square metre
- Bedrooms: 3
- Bathrooms: 2
- Car Parks: 2
- Double garage







Scale in metres. Indicative only. Dimensions are approximate. All information contained herein is gathered from sources we believe to be reliable. However we cannot guarantee its accuracy and interested persons should rely on their own enquiries

INT : 144m²
 EXT : 126m²
 GARAGE : 43m²



21 Aletta Street, Shailer Park