



## 25 Limerick Drive, CRESTMEAD, QLD 4132

### Large Dual Living Home!

This spacious and versatile family home, offering an impressive amount of living space both inside and out. Featuring dual-living potential with separate upstairs and downstairs accommodation, plus a detached granny flat, this property is ideal for large families, multi-generational living, or a home office setup.

#### Property Features:

##### Upstairs -

- 3 generously sized bedrooms with built-in wardrobes and ceiling fans
- Family bathroom with a shower over bath and a separate toilet
- Open plan living and dining area with an adjoining pantry/storage space
- Well appointed kitchen with ample storage
- Front verandah, perfect for relaxing

##### Downstairs -

The particulars contained herein are supplied for information only and shall not be taken as a representation in any respect on the part of the vendor or its agent. Interested parties should contact the nominated person or office for full and current details.

**TYPE:** For Rent

**INTERNET ID:** 37P6444

#### RENTAL DETAILS

**Rent / Lease:**

**\$990 pw**

#### CONTACT DETAILS

**Elders Real Estate Shailer Park**

4/54 Bryants Road  
Shailer Park, QLD  
(07) 3440 8500

**Paige Thompson**

- 3 multipurpose rooms with built in wardrobes (one with air conditioning)
- Second bathroom and a large kitchen with extensive workspace
- Spacious, air conditioned rumpus room
- Covered patio area for outdoor entertaining

Granny Flat -

- Air conditioned detached unit providing additional accommodation or workspace
- Separate outdoor bathroom

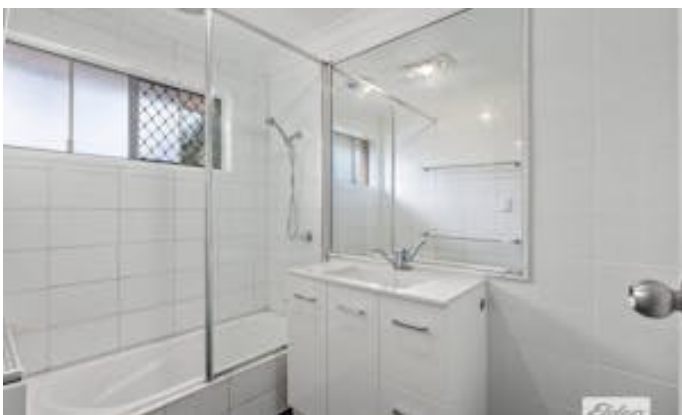
Outdoor Features -

- Large, fully fenced yard
- Outdoor shed for additional storage
- Two car driveway with ample off street parking

\*\*\* To book an inspection time, please register online. Once you have registered, we can notify you of any upcoming inspections, time changes or cancellations. \*\*\*

Other features: Close to Schools, Close to Shops, Close to Transport

- This property is: Unfurnished
- Pets: No
- Available on: 04/08/26
- Bedrooms: 3
- Bathrooms: 3
- Car Parks: 2









25 Limerick Drive CRESTMEAD