



9 Celestial Street, BOX HILL, NSW 2765

Modern Family Living in a Premium Parkside Location

Elders Real Estate is proud to present this beautifully designed family home at 9 Celestial Street, Box Hill. Ideally located in one of Box Hill's most rapidly growing communities, this contemporary residence offers a perfect blend of style, functionality, and low-maintenance living-ideal for families, first-home buyers, or investors.

With light-filled interiors, quality finishes, and a practical layout, this home is ready to move in and enjoy. You'll love being just moments from schools, childcare, parks, shops, and transport options.

Property Features:

- 4 well-proportioned bedrooms with built-in wardrobes
- Master bedroom with private ensuite and walk-in robe
- Stylish main bathroom with quality fittings and floor-to-ceiling tiles
- Modern kitchen featuring stone benchtops, gas cooking & stainless steel appliances
- Dedicated study room - ideal for working from home

The particulars contained herein are supplied for information only and shall not be taken as a representation in any respect on the part of the vendor or its agent. Interested parties should contact the nominated person or office for full and current details.

TYPE: For Sale

INTERNET ID: 39P0093

CONTACT DETAILS

Sukhwinder Singh
0433 562 680

- Open-plan living and dining area filled with natural light
- Covered alfresco area for outdoor entertaining
- Ducted air conditioning throughout for year-round comfort
- Solar system installed for energy efficiency
- EV charger included and ready for electric vehicles
- Big, open backyard and perfect for kids, pets, and weekend parties.

Location Highlights:

- Approx. 2 min walk to upcoming Box Hill Public School
- Approx. 2 min walk to upcoming Box Hill High School
- Approx. 3 min walk to the nearest bus stop
- Approx. 1 min walk Equinox Drive Reserve park
- Approx. 2 min drive Ceres Way Drive park.
- Approx. 2 min drive to Brindle parkway reserve park
- Approx. 1 min drive to Upcoming Box Hill Shopping Centre (750m)
- Approx. 7 min drive to Box Hill Carmel Village (3.5 km)
- Approx. 15 min drive to Rouse Hill Town Centre (6.5 km)
- Approx. 15 min drive to Rouse Hill Metro Station (6.5 km)

This is a fantastic opportunity to secure a quality-built, energy-efficient modern home in a family-friendly location with exciting growth and development ahead.

Disclaimer: All information has been provided to Elders Real Estate by third parties. While we have taken every care in presenting it, we do not guarantee its accuracy. Prospective buyers should conduct their own independent enquiries.

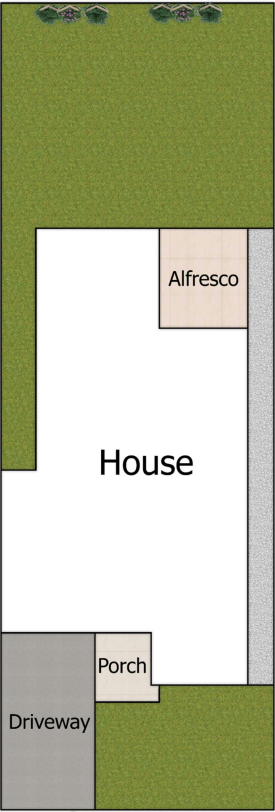
- Land Area 318.00 square metres
- Bedrooms: 4
- Bathrooms: 3
- Car Parks: 1



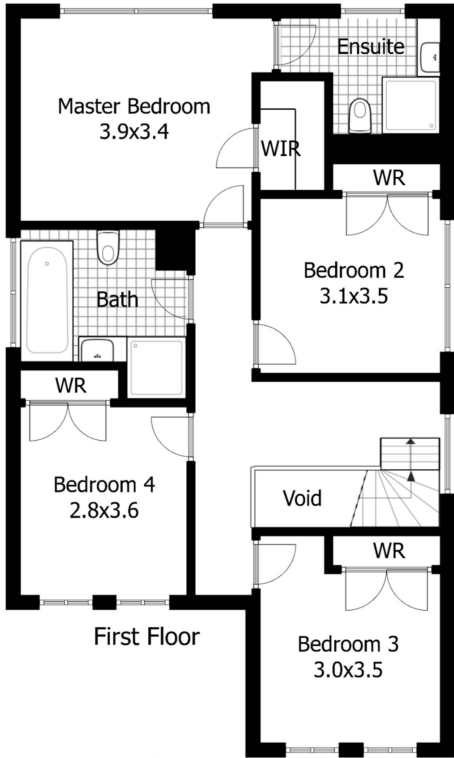
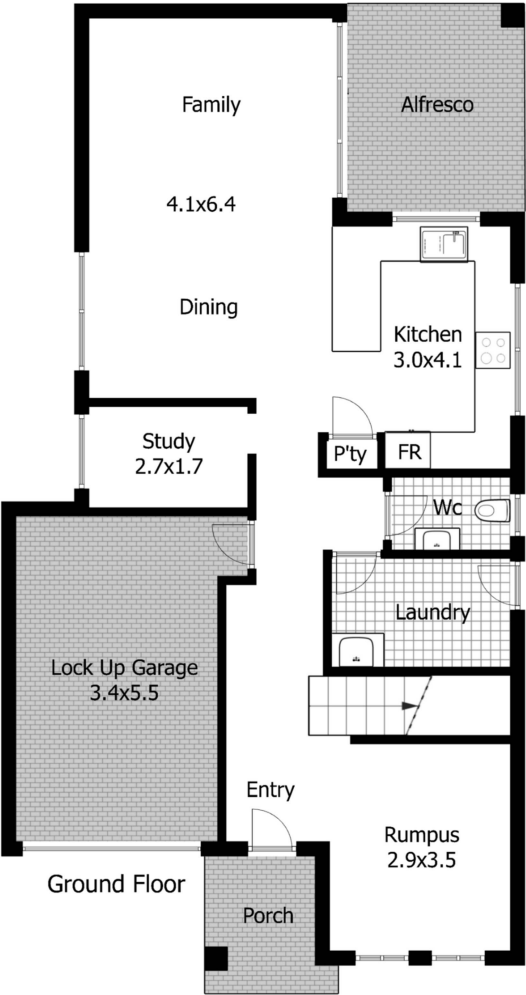




9 Celestial St, Box Hill



Siteplan



Floorplan

DISCLAIMER:

This floor plan is used for marketing purpose only and is subject to errors and inaccuracy. The marketing Agent & N2 Media will not accept any liability. Interested parties should make and rely on their own enquiries.