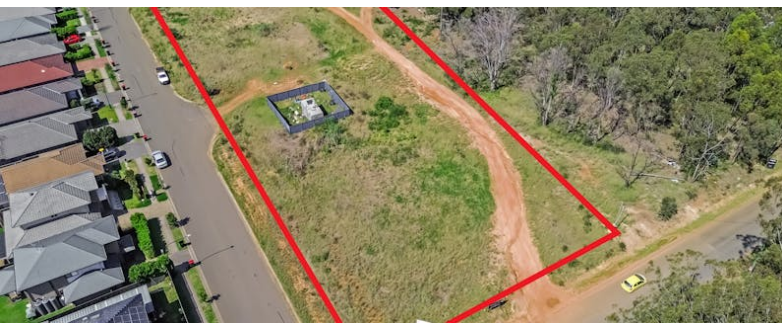


SCHOFFEL STREET



Princes Street, RIVERSTONE, NSW 2765

DA Approved Rare Development Opportunity in Grantham Farm.

5,560.00 square metres,

Joy Sarao and Ranbir Sangha from Elders Real Estate are proud to present an exciting and rare chance has arrived to secure this exceptional 5,560sqm parcel of land, perfectly positioned in the highly sought-after Grantham Park precinct-just moments from the thriving Box Hill and Riverstone region.

This site comes with DA Approval for 12-16 residential lots, including 4 prime corner blocks with duplex potential (STCA). Whether you are looking to develop, invest, or build your dream home, this property offers unmatched versatility and future growth potential.

Key Features:

- DA Approved for up to 12- 16 blocks (paperwork available upon request)
- 8 lots of 335.3sqm (12.5m frontage x 26.825m depth)

TYPE: Under Contract
INTERNET ID: 39P0742
SALE DETAILS
UNDER CONTRACT

CONTACT DETAILS

Joy Sarao
0490395231

- 4 corner lots of 544.8sqm (20.78m frontage x 26.825m depth, duplex potential STCA)

Total potential of 16 dwellings or explore options such as a childcare centre or custom-designed family home (STCA)

Fantastic location close to transport links, schools, and the booming North West Growth Corridor

This is a golden opportunity for buyers, investors, and developers to secure a site of this scale in an area where land supply is limited and demand is rapidly increasing.

Contact Joy Sarao 0490 395 231 or Ranbir Sangha 0412 002 953.

Arrange your private inspection today!

Disclaimer: Elders Real Estate Box Hill, its director, employees, and related entities believe that the information contained here is gathered from sources we deem to be reliable. However, no representation or warranties of any nature whatsoever are given, intended, or implied.

- Land Area 5,560.00 square metres

