



374 Pitt Town Road, PITT TOWN, NSW 2756

Premium 5-Acre Acreage with Stunning Mountain Views on Pitt Town Road

Joy & Ranbir â## Elders Real Estate Rouse Hill | Box Hill presents a premium 5-acre parcel along sought-after Pitt Town Road. This exceptional acreage offers outstanding space, convenience, and versatility. Perfect for tradies, truck operators, machinery owners, investors, or lifestyle buyers seeking a spacious property close to key amenities.

MAIN RESIDENCE

This impressive split-level Mountainview-built home is designed to cater to both family comfort and entertaining needs:

Five spacious bedrooms, including a large master suite with ample storage

Three modern bathrooms with quality fixtures

Generous car garage with internal access

TYPE: For Sale

INTERNET ID: 39P0780

CONTACT DETAILS

Joy Sarao
0490395231

Bright and open-plan living area that invites natural light throughout the day

Well-equipped kitchen boasting plenty of bench space, a large pantry, and dual dining areas for versatile meal settings

Two bedrooms and a bathroom situated on the upper level, perfect for teenagers or guests seeking privacy

Expansive outdoor pergola and dedicated entertainment area designed for gatherings and relaxing outdoors

Sparkling in-ground swimming pool providing a refreshing retreat and an inviting focal point for outdoor living

Solar panels installed, offering energy efficiency and reduced power costs

ACREAGE & LAND FEATURES

Approximately 5 acres of mostly cleared, usable land

Ideal for trucks, machinery, equipment, horses, or hobby farming

Excellent potential for additional sheds, workshops, or storage areas

Wide driveway access suitable for larger vehicles

Flexible RU4 zoning supporting a variety of land uses

LOCATION

A highly desirable Pitt Town Road position offering rural charm with everyday convenience:

Directly opposite Lynwood Country Club with panoramic mountain views

Close to Arndell Anglican College, childcare, and local shops

Only 5 minutes to Mulgrave Railway Station

Approximately 55 minutes to Sydney CBD

Within 15 minutes to Box Hill, The Gables, or Riverstone

Around 20 minutes to Rouse Hill

Don't miss the chance to secure this rare lifestyle property in the heart of Pitt Town. For more information, contact Joy Sarao on 0490 395 231 or Ranbir Sangha on 0412 002

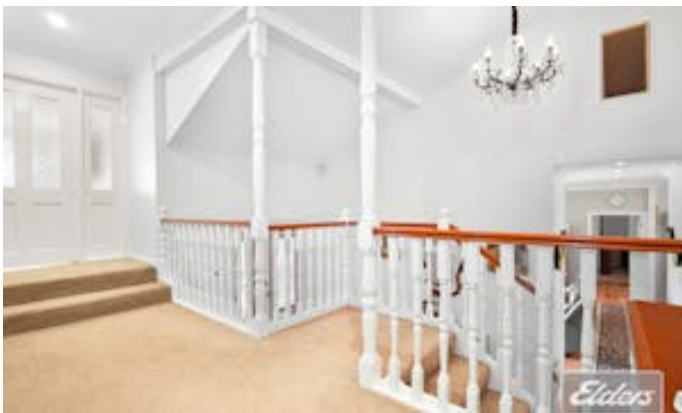
953.

Disclaimer: Elders Real Estate Box Hill, its directors, employees, and related entities believe that the information contained herein is gathered from sources we deem reliable. However, no representation or warranties of any nature whatsoever are given, intended, or implied.

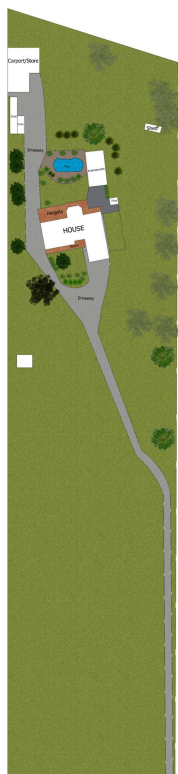
- Bedrooms: 5
- Bathrooms: 3
- 4 car garage











Siteplan



Floorplan

DISCLAIMER:

This floor plan is used for marketing purpose only and is subject to errors and inaccuracy. The marketing Agent will not accept any liability Interested parties should make and rely on their own enquiries



374 Pitt Town Rd,
Pitt Town