



10 Karloff Drive, STAFFORD HEIGHTS, QLD 4053

Spacious, Stylish & Exceptionally Versatile Family Living

Step into this impressive brick home and enjoy a perfect blend of space, comfort, and style. Designed for modern living, it's ideal for families or anyone needing room to relax, work, and entertain.

The property offers four bedrooms — three with built-in wardrobes, and the fourth currently set up as a home office, giving you flexibility to suit your lifestyle. The master suite is a private retreat with generous built-in robes and a large ensuite.

Bright, open-plan living and dining areas are filled with natural light and flow seamlessly into a stylish kitchen featuring an island bench, quality appliances, and plenty of storage. Covered outdoor entertaining areas extend your living space, perfect for casual gatherings or weekend barbecues.

Comfort is guaranteed with split-system air conditioning and easy-care tiled floors throughout.

Outside, a private covered courtyard and pergola are surrounded by landscaped gardens, mature greenery, and retaining walls. The property also includes side access,

The particulars contained herein are supplied for information only and shall not be taken as a representation in any respect on the part of the vendor or its agent. Interested parties should contact the nominated person or office for full and current details.

TYPE: For Rent

INTERNET ID: 41P3220

RENTAL DETAILS

Rent / Lease:

\$900 pw

CONTACT DETAILS

Woodford / Kilcoy

119 Archer Street

Woodford, QLD

07 5496 1333

David O'Halloran

0427 002 132

a handy storage shed, and a single lock-up garage.

Additional features include plantation shutters, a separate formal lounge, and a well-equipped laundry with external access.

This home truly offers everything you need for comfort, style, and functionality and is ready for you to move in and make it your own.

Disclaimer:

All information in this listing is gathered from sources we consider reliable. Elders Gold Property makes no guarantee, warranty, or representation as to the accuracy or completeness of the information. Interested parties should conduct their own inquiries. Images are for illustrative purposes and may not depict the property exactly.

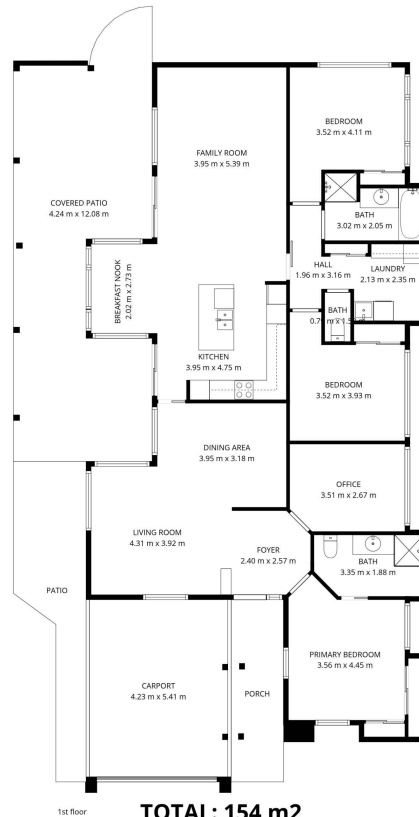
Other features: Carpeted, Close to Schools, Close to Shops, Close to Transport

- This property is: Unfurnished
- Pets: No
- Available on: 20/12/25
- Land Area 605.00 square metres
- Bedrooms: 4
- Bathrooms: 2
- Single carport
- Ensuite









10 Karloff Drive, STAFFORD HEIGHTS

4 2 1

Sizes and dimensions are approximate and should be used for reference only.
 Actual measurements may vary slightly and should be verified on-site before making any decisions.