

## 2-4 Allikea Place, D'AGUILAR, QLD 4514

### ROOM FOR THE WHOLE FAMILY... AND THEN SOME!

Set on an incredible 2,302m<sup>2</sup> block in the peaceful surrounds of D'Aguliar, this is the kind of property that simply keeps unfolding the more you explore it. Offering an exceptional combination of space, comfort and practicality, this sprawling family home has been designed for those who need room to live, entertain, work and store all the extras without compromise.

From the moment you arrive, the sense of scale is undeniable. The wide frontage, expansive yard space and enormous shedding immediately set the tone for what lies beyond. Step inside and the home continues to impress, with oversized proportions and multiple living zones thoughtfully designed to give the entire family room to spread out in complete comfort.

Whether it's relaxing in the separate lounge, gathering together in the huge open plan family and dining area, enjoying movie nights in the rumpus room or creating a quiet space for the kids in the dedicated retreat, this home caters effortlessly to growing families and multi-generational living alike. The generous kitchen sits right at the heart of the home, offering excellent bench space, storage and connection to the indoor and outdoor living areas.

**TYPE:** For Sale

**INTERNET ID:** 41P3251

**SALE DETAILS**

**Offers Over \$1,299,000**

**CONTACT DETAILS**

**Woodford / Kilcoy**

119 Archer Street

Woodford, QLD

07 5496 1333

**David O'Halloran**

0427 002 132

Outside is where the dream really comes to life. The backyard feels almost endless, providing an incredible amount of usable space for caravans, boats, trailers, work vehicles, kids, pets or simply enjoying the freedom that only a block of this size can provide. The massive powered shed with 3-phase power is ideal for tradies, hobbyists or anyone needing serious storage and workspace, while the covered outdoor entertaining area creates the perfect place to sit back and enjoy the peaceful surroundings.

Adding even more value and practicality, the property also features:

5 spacious bedrooms

Multiple living areas including lounge, family room, rumpus & kids retreat

Daikin ducted air-conditioning throughout

19.7kW solar system

Massive powered shed with 3-phase power

Bore water

Mains water & sewerage

315L hot water system

Double lock-up garage

Spacious fully fenced yard with side access

Quiet family-friendly location

Properties that offer this much space, flexibility and infrastructure are becoming increasingly difficult to find. Whether you're searching for the ultimate family home, somewhere to accommodate all the toys, or simply a property where you never feel boxed in, this exceptional D'Aguilar residence delivers a lifestyle that is hard to replicate.

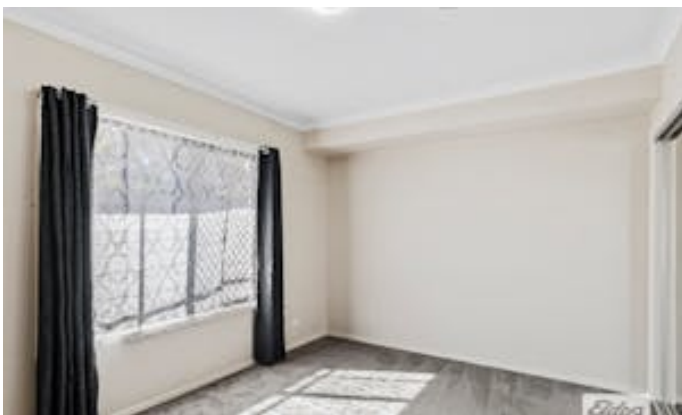
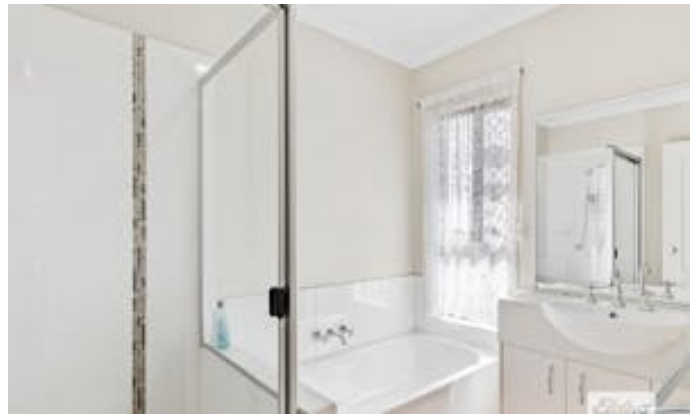
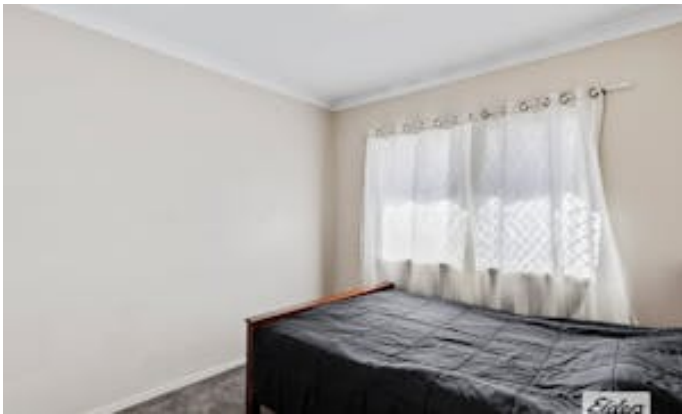
Please note: Shade sheds/carport structures shown in marketing images are not included in the sale.

Disclaimer: Whilst every care has been taken in the preparation of this marketing, Elders Gold Property relies on information provided by third parties and makes no guarantee, warranty or representation as to the accuracy or completeness of the information provided. Interested parties should make their own enquiries and independent investigations to satisfy themselves regarding all aspects of the property. Features, inclusions, boundaries, services and improvements are subject to change without notice.

Other features: 3 Phase Power, Carpeted, Close to Schools, Close to Shops

- Land Area 2,302.00 square metres
- Bedrooms: 5
- Bathrooms: 2
- 5 car garage
- Ensuite







## 2-4 ALLIKEA PLACE D'AGUILAR

- 5 BEDROOMS
  - 2 BATH + WC
  - 2 CAR
  - 19.7kW SOLAR SYSTEM
  - MAINS WATER & SEWERAGE
  - ZONEABLE DAIKIN DUCTED AIR CONDITIONING
  - 3 PHASE TO THE SHED
  - BORE WATER
  - 315L HOT WATER SYSTEM
- N



This floor plan is for illustrative purposes only. All measurements are approximate and should be used as a guide only. Prospective purchasers are advised to conduct their own enquiries.

APPROXIMATE UNDER ROOF SPACE = 287m<sup>2</sup>