



5 Avondale Street, MORAYFIELD, QLD 4506

Spacious home with Room for the Boat & Caravan

Set on a generous parcel of land, this high-set spacious home offers space, functionality, and lifestyle appeal

Upstairs features:

- 3 bedrooms, main plus 1 with built-ins
- Spacious kitchen with electric hotplates, new wall oven
- Space for microwave, pantry, dishwasher
- Open dining and lounge area with timber floors
- Main bathroom with separate bath & shower
- Ceiling fans throughout
- Rear deck overlooking peaceful parkland

Ground floor features:

The particulars contained herein are supplied for information only and shall not be taken as a representation in any respect on the part of the vendor or its agent. Interested parties should contact the nominated person or office for full and current details.

TYPE: For Rent

INTERNET ID: 41P3252

RENTAL DETAILS

Rent / Lease:

\$780 pw

CONTACT DETAILS

Woodford / Kilcoy
119 Archer Street
Woodford, QLD
07 5496 1333

Rebecca Kassulke
0409 508 713

- Office space ideal for working from home
- Two storage rooms with built-in cupboards
- Separate Laundry
- Modern bathroom with shower only
- Tiled flooring throughout
- Large electric HWS
- Solar power - 5kw system - 16 panels

Outdoor & Extras:

- 3-bay powered shed with drive-through access
- Remote on 1 door
- Huge 990sqm fully fenced block
- Direct parkland outlook - no rear neighbours

Location:

Walk to schools, shops, bus stops, and railway station - convenience at your doorstep.

Schools (approx.)

- Morayfield East State School 1 klms
- Morayfield High School 1.6 klms
- Caboolture Special School 3.4 klms
- St Columban's High School-7.2 klms
- St Pauls Lutheran Primary School -8.2 klms
- Grace Lutheran College 6.4 klms

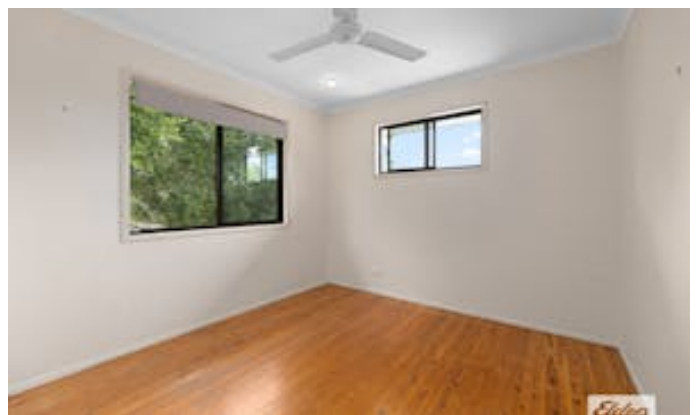
Places of Interest (approx.)

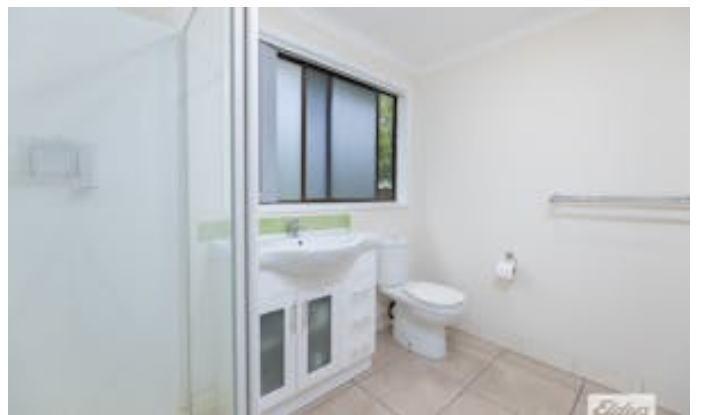
- Morayfield Railway Station 1klms
- Morayfield Shopping Plaza 2.1 klms
- Brisbane Airport 44.7 klms
- Caloundra (Sunshine Coast) 50.4 klms
- Brisbane CBD 48.4 klms
- Caboolture Hospital-6.7 klms

Disclaimer: All information contained herein is gathered from sources we believe to be reliable. However, we cannot guarantee its accuracy; we do not accept any responsibility for its accuracy and do no more than pass it on. Any interested persons should rely on their own enquiries.

Other features: Close to Schools, Close to Shops, Close to Transport

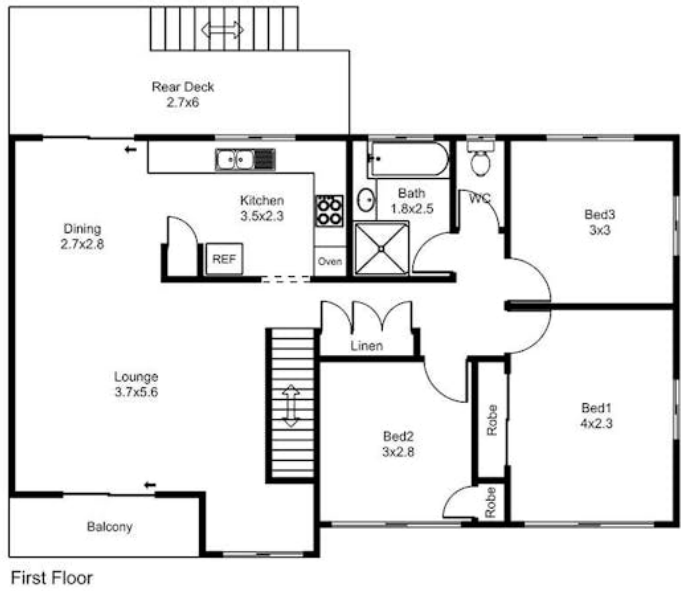
- This property is: Unfurnished
- Pets: No
- Available Now
- Land Area 990.00 square metres
- Bedrooms: 3
- Bathrooms: 2
- 3 car garage
- Floorboards











Floor plan, measurements and dimensions are approximate and are for illustrative purposes only. Pixmo Productions gives no guarantee, warranty or representation as to the accuracy and completeness of the floor plan.

FLOOR PLAN:
5 AVONDALE STREET - MORAYFIELD