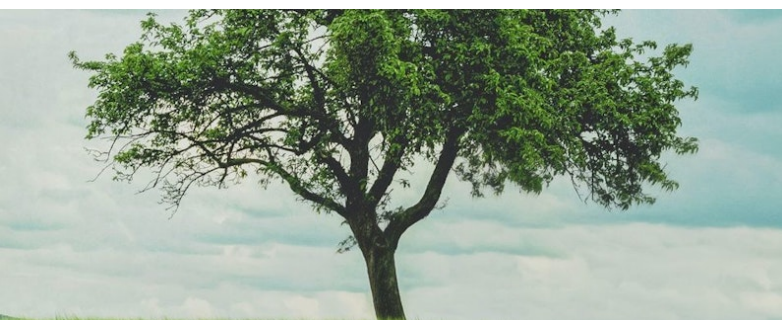




This site plan including measurements and dimensions are approximate and for illustrative purposes only.



## Ranger Street, YARRAM, VIC 3971

"GREEN HAVEN" IT ALL BEGINS HERE!

**777.00 square metres,**

Exciting new land release in the prime Green Haven Estate Yarram is now for sale. This development offers 36 blocks, sizes starting from 723m<sup>2</sup> to 959m<sup>2</sup>. If you love the outdoor lifestyle, Yarram is the centre to all of the action including Heesco Town, the famous Tarra Easter Festival, and a short drive to Tarra Valley National Park, the Strzelecki Ranges, Ninety Mile Beach and historic Port Albert while Wilsons Promontory is just 90 minutes away.

Stage 1 & 2 of the Green Haven Estate is ideally located off Campbell Street, Yarram. This outstanding residential allotment is surrounded by modern quality homes with a rural outlook and park like surrounds.

- Lot 70, Ranger Street, Yarram- 777m<sup>2</sup>
- Land titles expectancy mid to late 2026

This Estate has easy access to the town's 3 schools, bowling club, tennis courts,

The particulars contained herein are supplied for information only and shall not be taken as a representation in any respect on the part of the vendor or its agent. Interested parties should contact the nominated person or office for full and current details.

**TYPE:** For Sale

**INTERNET ID:** 43P1203

**SALE DETAILS**

**\$269,000**

**CONTACT DETAILS**

**Elders Yarram (formerly Yarram R.E)**

266 Commercial Road  
Yarram, VIC  
03 5182 6600

**Sonya Brown**  
0427 444 244

swimming pool, rail trail, wetlands and a short walk to the business district.

Yarram is an easy 220km drive southeast of Melbourne and close to the major Gippsland centres of Traralgon (64 km) and Sale (72 km).

For a Due Diligence Checklist go to: [consumer.vic.gov.au/duediligencechecklist](http://consumer.vic.gov.au/duediligencechecklist)

Or call us on (03) 51826600

- Land Area 777.00 square metres

