



65 Temple Street, HEYFIELD, VIC 3858

STILL AVAILABLE..WORK FROM HOME

Commercial 1 Zoned residence previously used as a Maternal Health Centre located in the rural town of Heyfield 2.5hrs from Melbourne. This solid brick house would be suitable for an office or surgery with residence out the back or submit a planning permit to use solely as a house (STCA). The front of the house consists of 3 offices or consulting rooms with a large living/reception area with fireplace, all rooms have sinks with 2 having adjoining toilets and one also with kitchen cupboards. The back of the house is set up for a residence with 1-bedroom, functional kitchen, dining area with split system, bathroom with shower and laundry. There is a small low maintenance backyard accessible from the laundry and carport out the front. This is prime location in the centre of Heyfield with shops, parkland, school, library, bike tracks and sports facilities all within walking distance.

TYPE: Sold

INTERNET ID: 43P1232

SALE DETAILS

\$310,000

CONTACT DETAILS

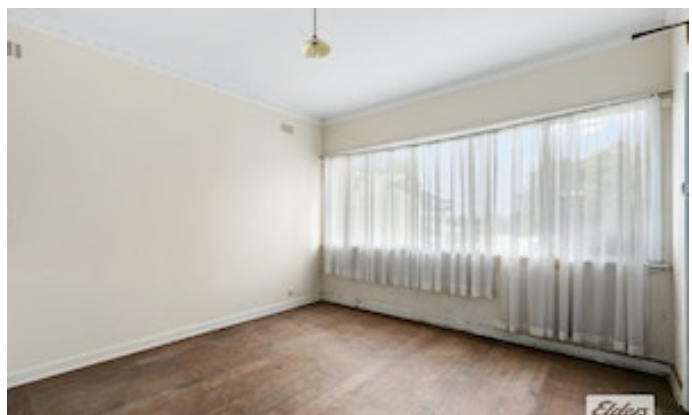
Tracey Wrigglesworth
0427 444 044

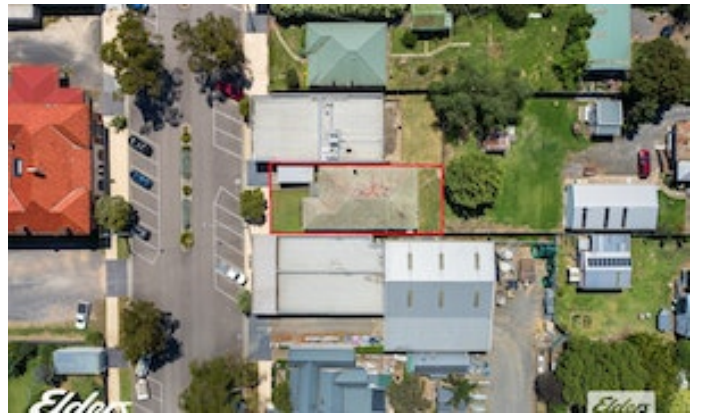
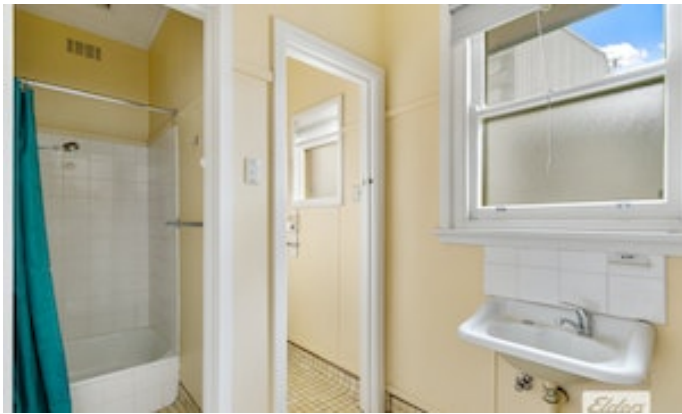
For a Due Diligence Checklist go to: consumer.vic.gov.au/duediligencechecklist

Or call us on (03) 5144 4444

- Land Area 372.00 square metres
- Building Area: 240.00 square metres
- Bedrooms: 4
- Bathrooms: 3

- Single carport





— Current residence



