

4 Hughes Avenue, MOONTA BAY, SA 5558

Three titles – solid home

Moonta Bay, a very quiet seaside country town with beautiful beaches and some of SA, has premier fishing spots on your doorstep. With 2 hours' drive from Adelaide, the kids will be catching squid and blue crabs from the jetty, whilst you stretch your legs on the long 2 km long sandy beach or entertaining with family and friends.

Hughes Avenue is a quiet street, the beach is 65 m from the boundary, a relaxing sleep listening to the ocean waves is ideal. Sea views with three separate community titles of 342 sqm - zoning: neighbourhood - maximum build height is to 9 metres or two story. Planning allows for row dwelling, townhouses, like those located next door. Stone open plan home with 3 bedrooms in good condition with large living areas including dining/meals area, lounge, and spacious kitchen with electric oven, pantry, and lots of cupboard space. The main bedroom has built in robes, bedrooms two and three are queen size. Ceiling fans in most rooms, wall heater and rc/ac wall unit. Pine flooring, tiled floors, large windows, fireplaces. Tiled bathroom with vanity and shared laundry. The home has 98 m2 of living space, stone external and some internal walls. The property presents in a neat and tidy manner and has been previously rented to tenants. Outside toilet, plenty of space to build a big shed, or park caravans, boats and let the fun begin.

Stroll down to the tavern to share the fishing story's, a gentle incline to get home. Take

The particulars contained herein are supplied for information only and shall not be taken as a representation in any respect on the part of the vendor or its agent. Interested parties should contact the nominated person or office for full and current details.

TYPE: Sold

INTERNET ID:

44828624-2e43-4880-9f96-3d81

SALE DETAILS

\$549,000

CONTACT DETAILS

,

David Cook

0419 837 361

away food, shop/supplies, and fuel available with 150m. Boat launching from nearby Port Hughes, regional shopping facilities in Moonta. Ahhh - the choices - what would you do? Live in now, rent out the investment whilst planning for three new homes (stcc). Located right behind the front row cliff top homes, building so close to the sea opportunity is now.

Offers with pre-approved finance preferred.

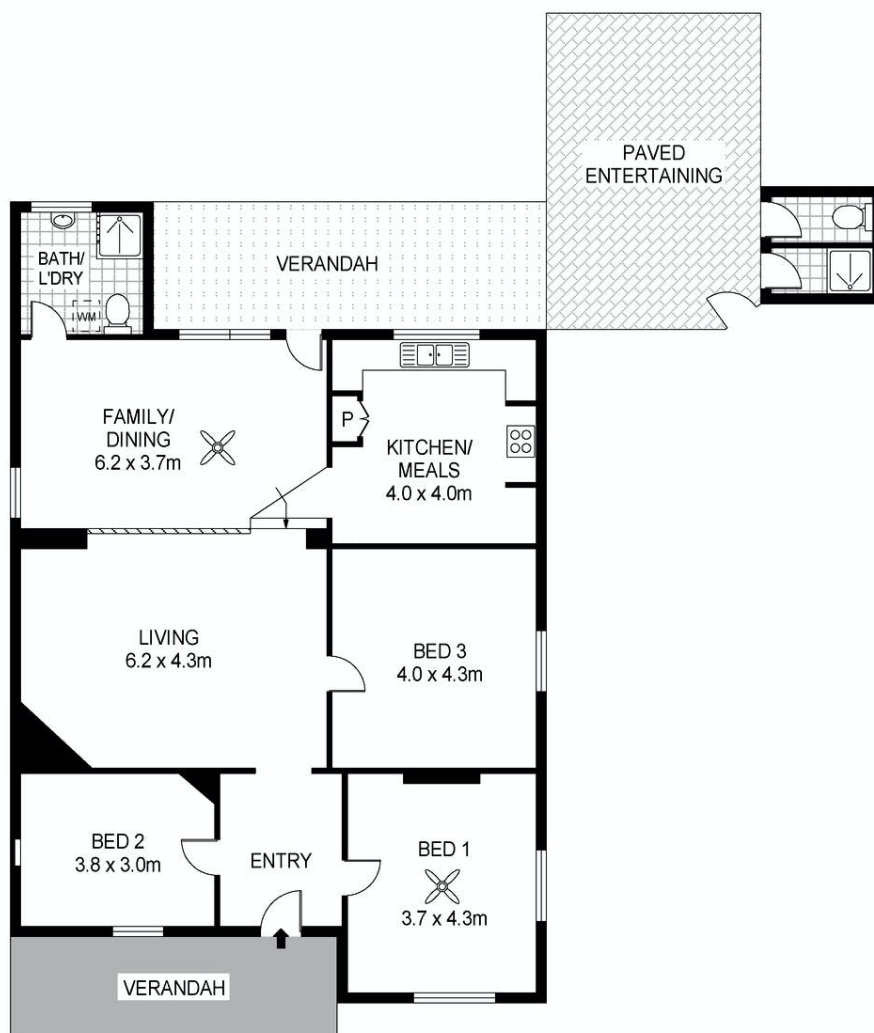
Other features: Close to Schools, Close to Shops

- Land Area 1,031.00 square metre
- Bedrooms: 3
- Bathrooms: 2









Scale in metres. Indicative only. Dimensions are approximate. All information contained herein is gathered from sources we believe to be reliable. However we cannot guarantee its accuracy and interested persons should rely on their own enquiries

INT : 130m²
EXT : 66m²

4 Hughes Avenue, Moonta Bay