



47 Sommerfeld Crescent, CHINCHILLA, QLD 4413

THE COMPLETE PACKAGE – WELCOME HOME

This beautifully constructed home in the ever-popular Sommerfeld Crescent has been designed with family living and entertaining in mind. With four large bedrooms, two bathrooms, multiple living spaces, two car accommodation under roof and a three-bay powered shed, all on a fenced 1,598sqm block, this is a lifestyle opportunity you don't want to miss!

Upon entry through the timber front door, the tiled floor leads to the open plan kitchen, dining and casual living area, while to the right is the carpeted media room and separate formal dining area or an ideal spot for a pool table. Incorporated in the living area is a well-thought-out office nook nestled neatly behind a series of bi-folds.

The modern kitchen features stainless steel appliances and gas cooktop, generous island bench including breakfast bar, plenty of ceiling-high cupboards for storage and large walk-in pantry. The expansive living zones spill effortlessly onto 49sqm of covered outdoor entertaining area. Ceiling fans and reverse-cycle ducted air conditioning throughout the house mean year-round comfort.

Each of the four bedrooms is carpeted, with generous built-in robes to three and a walk-in robe to the master. The master suite also features a spacious ensuite. Storage is plentiful, with hallway linen cupboards, under-bench cupboards in the laundry and extra cupboard space in the two-car remote entry garage.

TYPE: For Sale

INTERNET ID: 50P5088

SALE DETAILS

Offers around \$745,000

CONTACT DETAILS

Chinchilla

69 Heeney Street

Chinchilla, QLD

07 4669 1966

Di Ewen

The bathroom features separate shower, bath and family-sized vanity, with the toilet next door. The internal laundry is accessible from the back area. The home is finished in neutral, yet earthy tones, bringing a sense of peace and tranquillity. Positioned privately at the rear of the estate gives this property an air of seclusion.

Stepping outside, the experience continues with the fabulous undercover patio area, large enough for outdoor dining and lounge settings area. The back yard is home to low maintenance gardens dabbled in shade from the established trees. A large three-bay powered shed/workshop with concrete apron and concrete drive to street completes this package.

At a glance:

*Four bedrooms, two bathrooms

*Built-in robes (walk-in to master)

*Separate lounge, formal dining and casual living

*Over 49sqm of outdoor under roof space

*Solar gate to drive-way

*Three-bay powered shed with 15amp power

*Rainwater tank

*Two-car remote entry garage

*3 phase reverse cycle ducted air conditioning and ceiling fans throughout

*1,598sqm fully fenced block

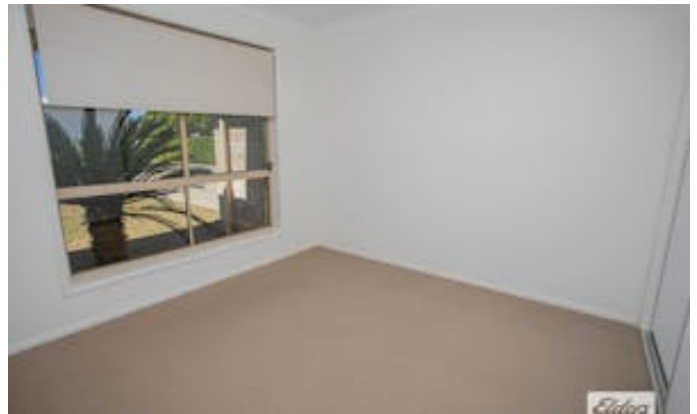
With over 300sqm under roof 47 Sommerfeld Crescent is sure to suit the buyer looking for space designed for the enjoyment of family living.

Call Di Ewen today to secure your private inspection.

Other features: Carpeted, Close to Schools, Close to Shops, Close to Transport

- Land Area 1,598.00 square metre
- Building Area: 301.00 square metres
- Bedrooms: 4
- Bathrooms: 2
- 5 car garage
- Ensuite









FLOOR PLAN

LIVING	: 207.84m ²
ALFRESCO	: 49.66m ²
GARAGE	: 42.00m ²
PORCH	: 2.65m ²
TOTAL AREA	: 302.15m²