

47-49 Ellem Drive, CHINCHILLA, QLD 4413

Newly Built Fresh Look – 47 Ellem Drive

Located in the popular Chinchilla Park Estate, this thoughtfully planned home offers space to spread out. Never before lived in, this well-presented property offers a bright and refreshed feel, ready for its new owners to move straight in and enjoy.

Designed with comfortability and function in mind, the home features four well-sized bedrooms with built-in robes and a master with private ensuite and walk-in robe. Airconditioning is throughout with a unit in each bedroom and one in the living area.

The open-plan living and dining area creates a welcoming central space for everyday living, the contemporary kitchen is fitted with quality appliances, plenty of bench space and a walk-in pantry offering functionality for busy households.

Set on a spacious 720 metre square block, the property offers plenty of room for outdoor entertainment, children or future landscaping. A double lock-up garage completes this impressive package.

Property Features:

The particulars contained herein are supplied for information only and shall not be taken as a representation in any respect on the part of the vendor or its agent. Interested parties should contact the nominated person or office for full and current details.

TYPE: For Sale

INTERNET ID: 50P5095

SALE DETAILS

Offers over \$585,000

CONTACT DETAILS

Chinchilla

69 Heeney Street

Chinchilla, QLD

07 4669 1966

Di Ewen

New build â## never lived in

Four spacious bedrooms with built-in wardrobes

Master bedroom with walk-in robe and ensuite

Open-plan living and dining area

Functional and spacious kitchen

Low-maintenance yard

Airconditioning throughout

This is a fantastic opportunity to secure a brand-new home in a growing family-friendly location.

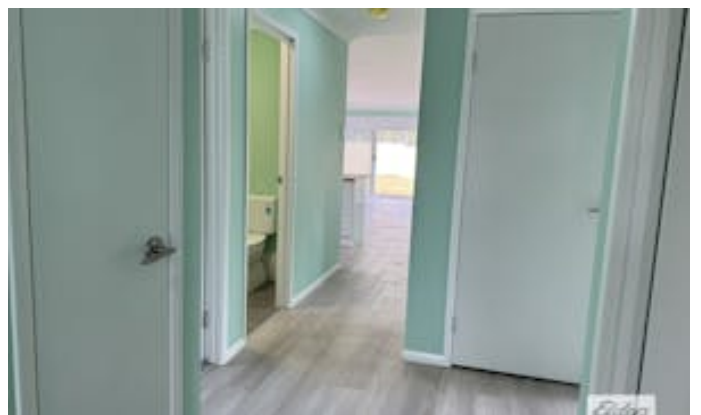
Additional details:

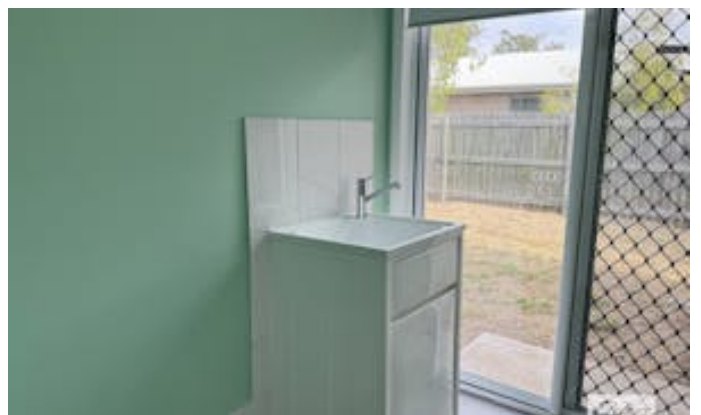
Rates: Approximately \$1,400 per half yearly

Current Market Rent: \$570.00 - \$600.00 per week

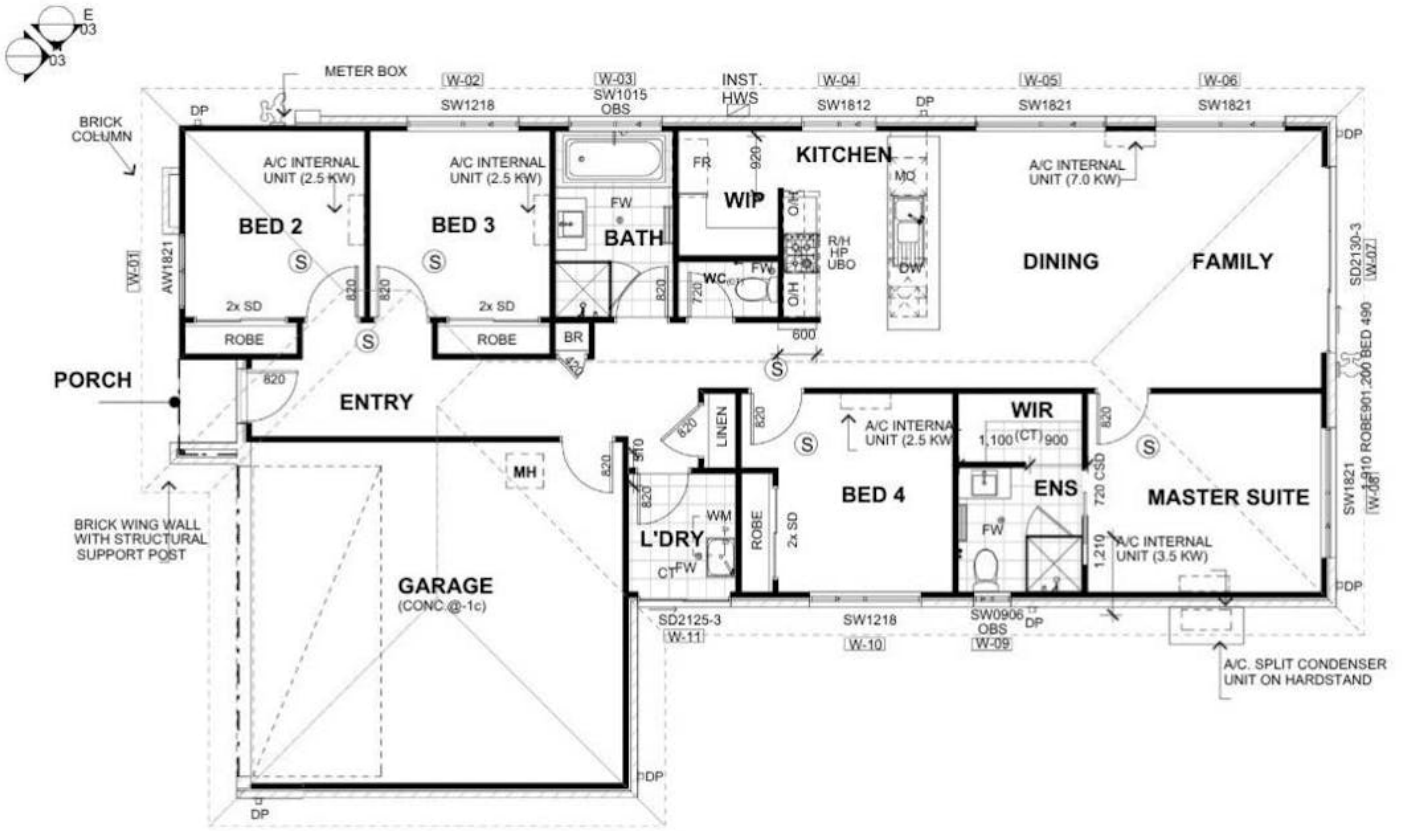
To arrange your inspection, contact Di today 0428 627 647

- Land Area 720.00 square metres
- Bedrooms: 4
- Bathrooms: 2
- Double garage









FLOOR PLAN

